

MATERIALS LIST

- [Riviera](#) digital pattern
- [Block Printed Riviera Kit](#) (optional purchase)
 - Or use similar fabrics (XS-M)
 - 3 yards cotton fabric
 - Or use similar fabrics (L-XXL)
 - 3½ yards cotton fabric
- ¼ yard Fusible Interfacing
- 6 Buttons
- 1-2 spools Cotton Thread
- 3 Spools Coordinating Isacord or other overlock thread
- [Silk Thread](#) in contrasting color
- Hand Sewing Needle
- [Prismacolor Prismacolor 20045 pencil with eraser](#)
- [French Curve](#)
- [Extra Long Ruler](#)
- Scotch Removable tape
- [Cutting Shears](#)
- Pattern Paper or Tissue Paper
- [Rotary Cutter and Cutting Mat](#)
- [Trimming Scissors or Snips](#)
- [Glasshead Pins](#)
- [Seam Ripper](#)
- [Seam Gauge](#)
- [C-Thru Grid Ruler](#)
- [Fusi-Web](#)
- [Walking Foot](#)
- [Point Turner](#)
- [Edgestitch Foot](#)
- [Buttonhole Foot](#)
- [Manilla File Folder or Tagboard](#)
- [Sleeve Board](#)
- [Tailor's Ham](#)
- [Chakoner](#)

You will need a sewing machine that has been cleaned and oiled and is in good condition. If your machine also embroiders and has a 9mm throat plate, you may want to invest in a 5mm-wide throat plate. If you have the even feed feature on your machine, engage it. If not, add a walking foot, if possible. We recommend a serger for seam finishes.

Purchase the Pattern

Purchase the digital Riviera pattern. You can now select for us to print the pattern for you from our in-house printing service.

Fabric Preparation

Pre-wash a small sample of the fabric. If you're happy with the result, wash your yardage.

Pattern Pieces Needed from Original Pattern

- Back
- Left Front
- Right Front
- Sleeve

Pattern Pieces You'll Use

- Upper Left Sleeve
- Lower Left Sleeve
- Right Sleeve
- Right Front
- Left Front
- Right Back
- Left Back
- Button Placket
- Bias Collar

Pressing Templates Needed

- 2¼"
- 1⅞"
- 1½"
- 1"
- ¾"
- 1⅛"

Fitting

The Riviera is a loose-fitting shirt that is available in sizes XS-XXL.

Measure your full bust. The Riviera measurement chart is included here. Measure the pattern on that size and compare the two measurements. The amount of ease you add is a personal choice based on your shape and how you like garments to fit.

For instance, we recommend allowing 6" to 8" of ease in the bust for a blouse or shirt. Start with a size that has this amount of ease and adjust as needed. Consider using the [Fashion Fitting Encyclopedia](#) for reference.

References to Consider:

[Fitting the Bust Download Tutorial](#)

[Fitting Shoulders Download Tutorial](#)

Finished Measurements (inches)

Finished Center Back

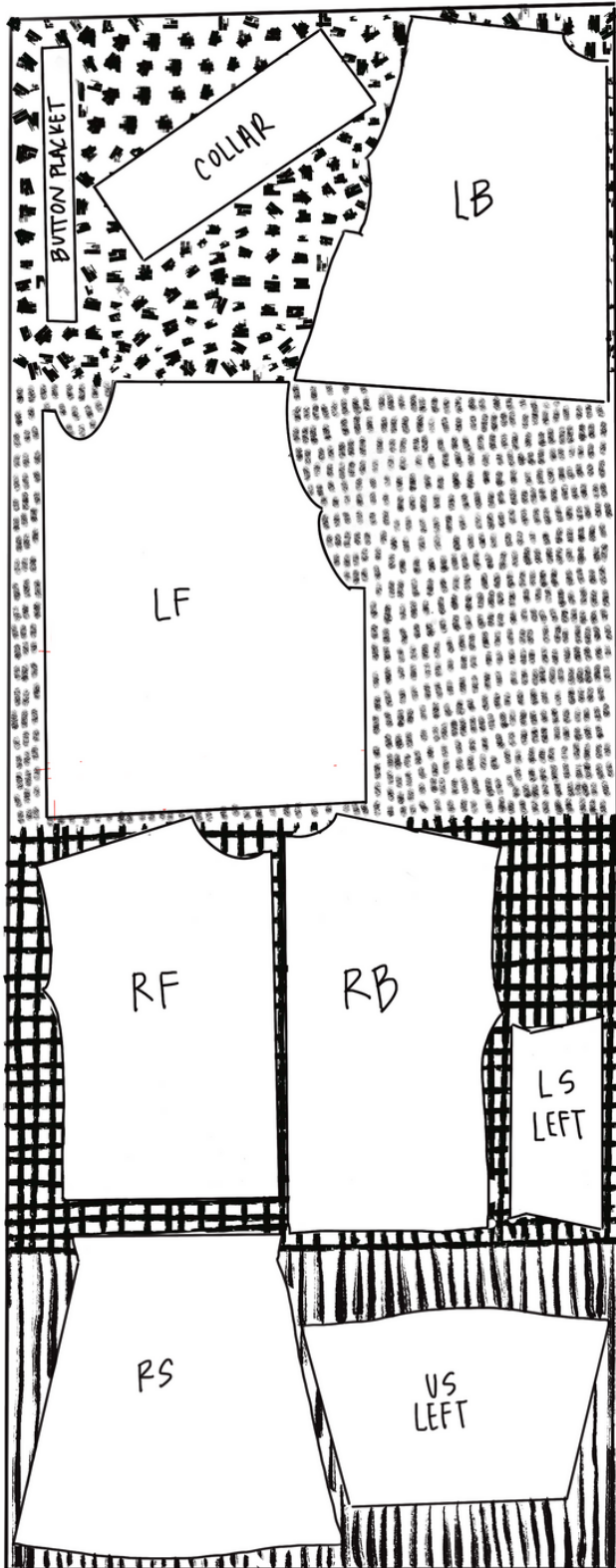
	XS	S	M	L	XL	XXL
View A	26 1/2	26 3/4	27	27 1/4	27 3/4	28 1/4
View B	33 1/2	33 3/4	34	34 1/2	34 3/4	35 1/4

Finished Bust

	XS	S	M	L	XL	XXL
Shirt	47 1/2	49 1/2	51 1/2	53 1/2	56 1/2	59 1/2

44" wide

1 panel, 4 motifs



Things to note while cutting out:

- Fabric panels may vary slightly due to their hand blocked nature
- Adjust layout accordingly
- Depending on size and cut of panel, the layout of the Right Sleeve and Left Back may have to be adjusted to fit into next motif

Right Front

1. Neckline Change

- At self facing line, measure down $\frac{1}{2}$ " and mark. At shoulder seam, measure over $\frac{1}{4}$ " and mark. To lower the neckline, use a French curve to connect the two marks. Fold pattern at self-facing line and trace new curve onto facing. (illustration 1)

2. Button Placket Placement Lines (illustration 2)

- Measure $5\frac{1}{4}$ " over from Center Front and $1\frac{7}{8}$ " above XS hem foldline. Mark a dot. Draw a line from Center Front/Neckline intersection to new dot.
- Draw a parallel second line $\frac{3}{4}$ " from first line.
- Mark dots at $\frac{5}{8}$ " seam allowance on placement lines at neckline.
- Placement lines should be approximately $21\frac{5}{8}$ " long.

3. Button Markings (illustration 3)

- In the center of the placket placement lines, mark button placements.
- First button is $1\frac{1}{2}$ " from top seam allowance dots.
- Each additional button is $3\frac{1}{4}$ " apart. There are 6 buttons total.

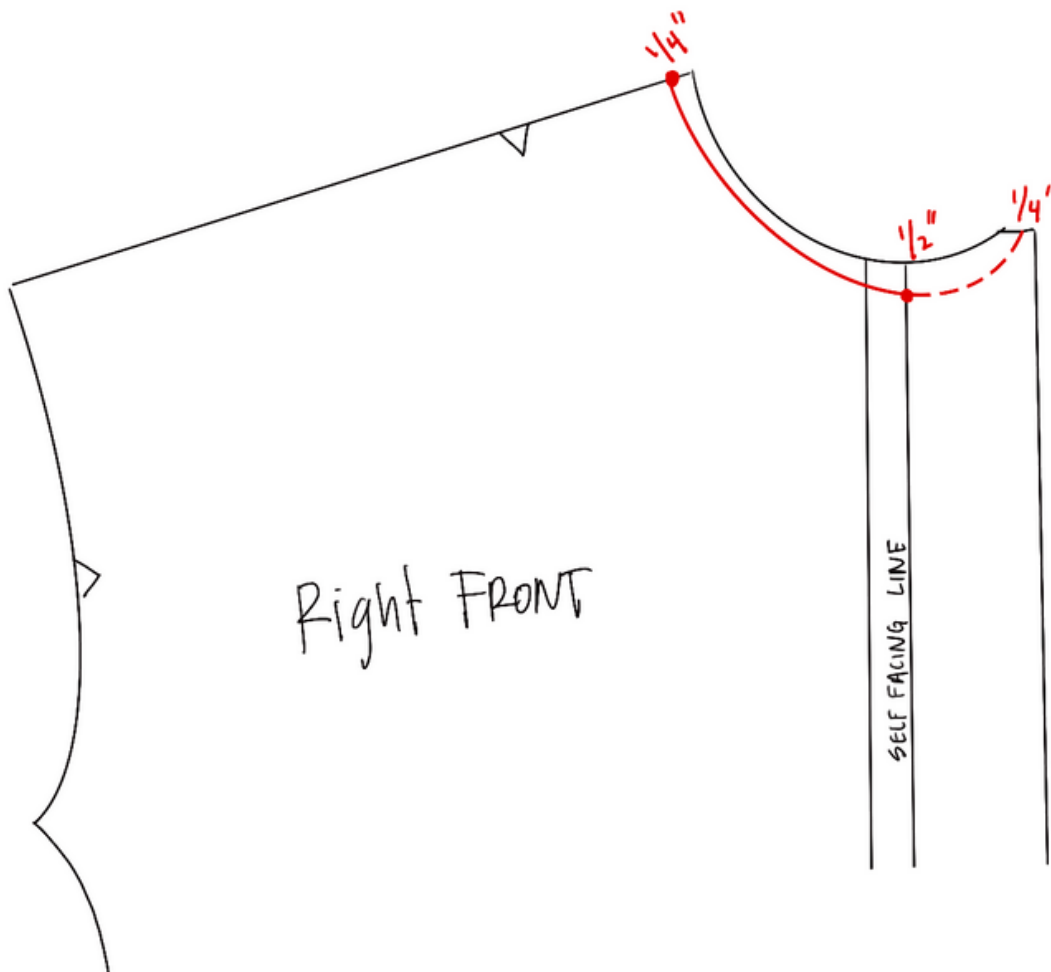


Illustration 1

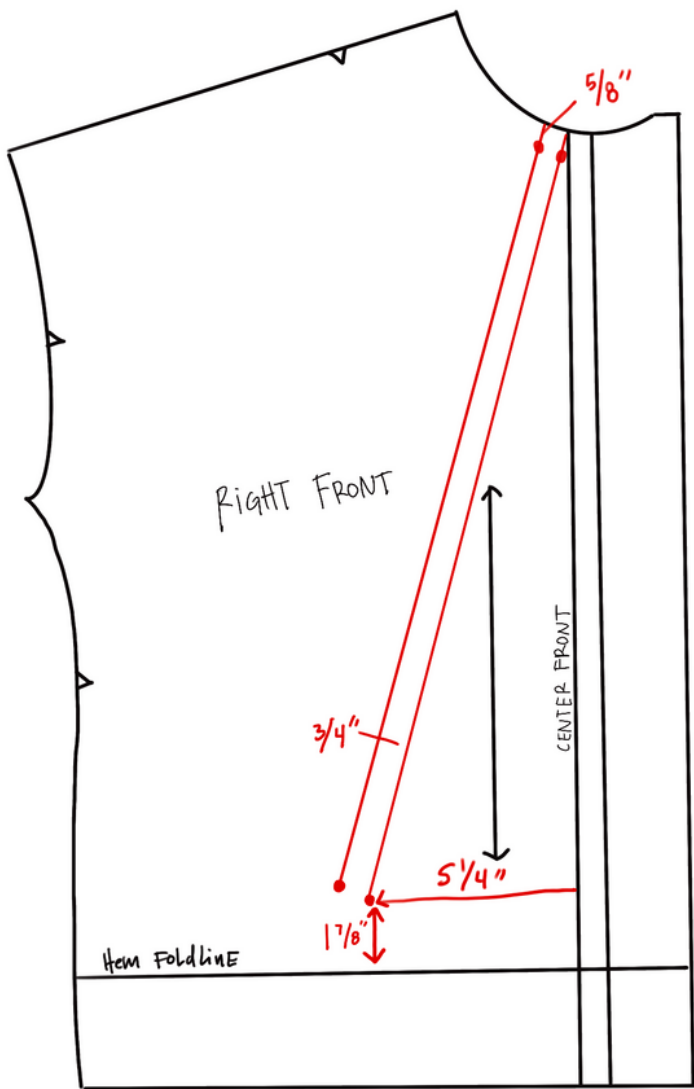


Illustration 2

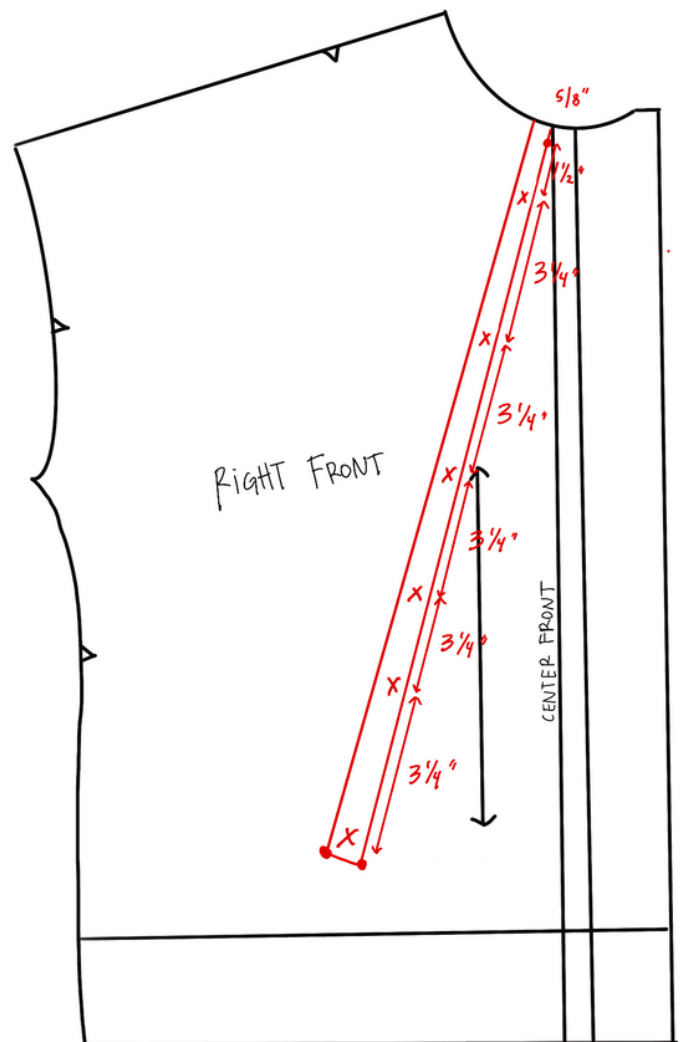


Illustration 3

Left Front

1. Neckline Change

- At self facing line, measure down $\frac{1}{2}$ " and mark. At shoulder seam, measure over $\frac{1}{4}$ " and mark. To lower neckline, use a French curve to connect the two marks. Fold pattern at self-facing line and trace new curve onto facing (illustration 1).
- At center front cut line, cut off $\frac{3}{8}$ ".
 - Shorten Left Front 4" from bottom cut line.
 - Mark 1 $\frac{1}{2}$ " hem foldline (illustration 2).

2. Buttonhole Markings (illustration 3)

- At center Front neckline, mark $\frac{5}{8}$ " seam allowance at center Front and Self-Facing.
- From seam allowance marking, measure down 1 $\frac{3}{8}$ " for first buttonhole. Each buttonhole is $\frac{3}{4}$ " long (depending on button size).
- Distance between buttonholes is 3 $\frac{1}{4}$ ". There are 6 buttonholes total.

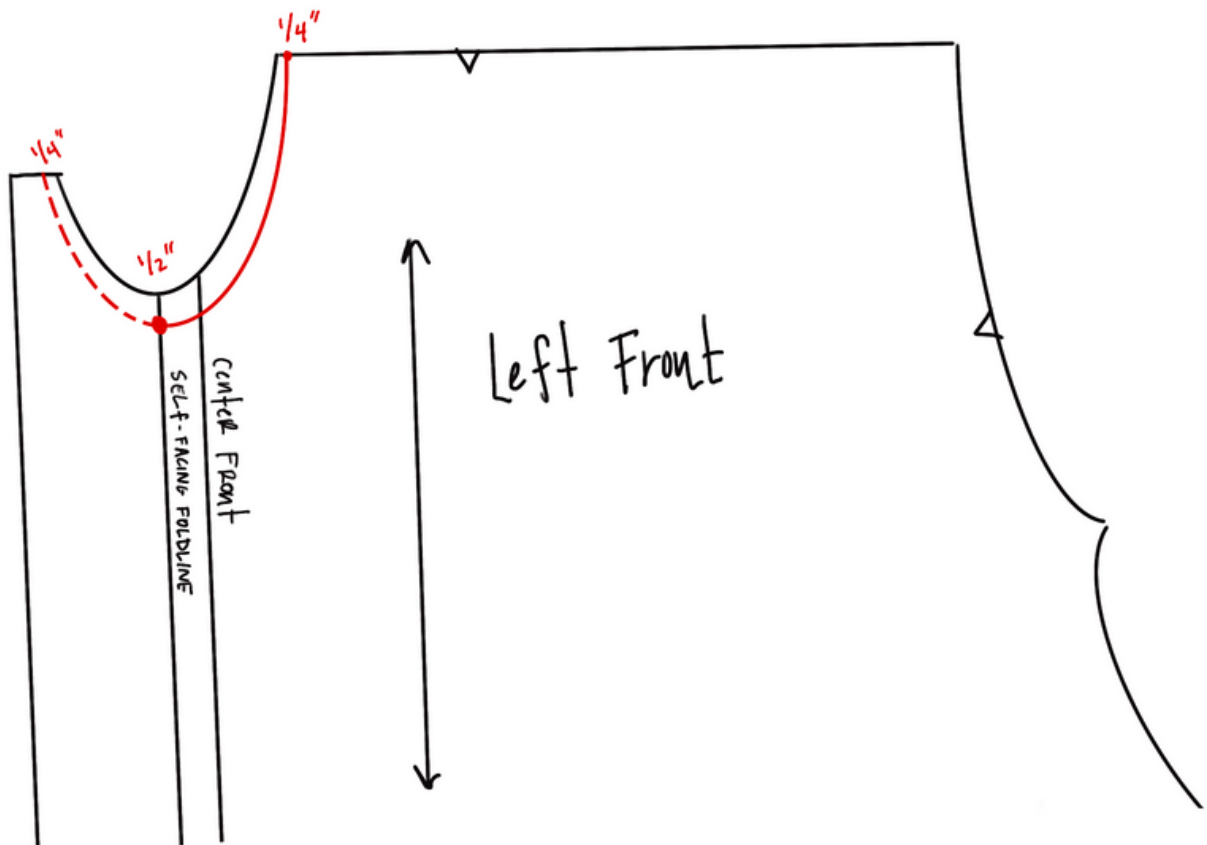


Illustration 1

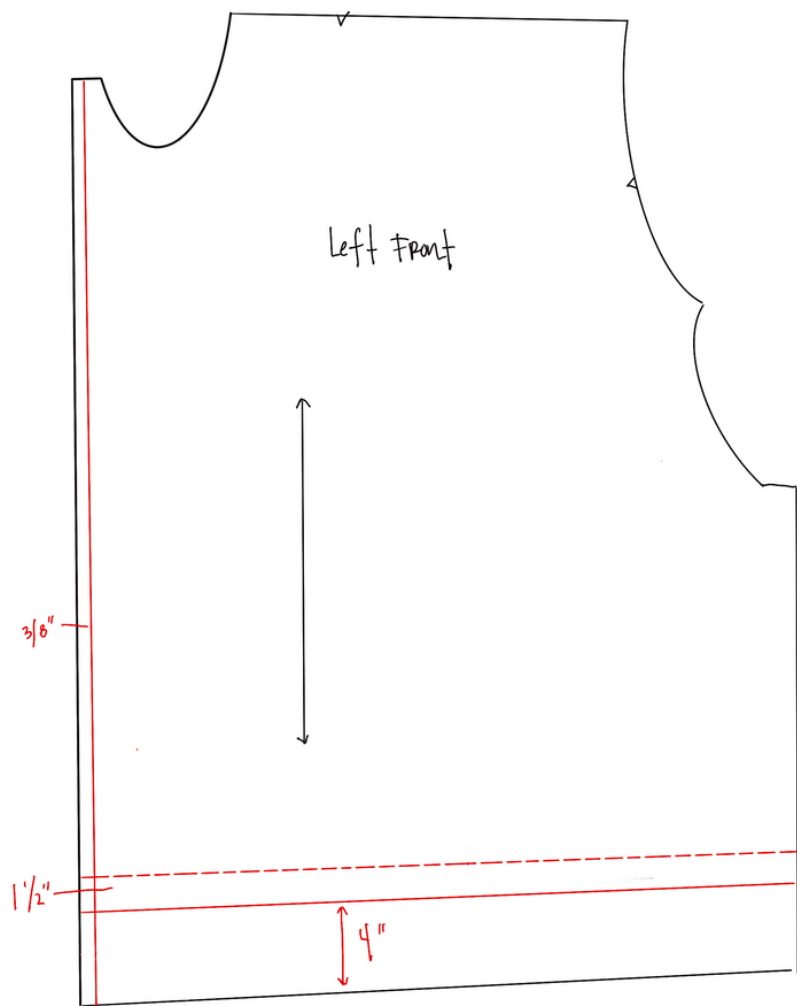


Illustration 2

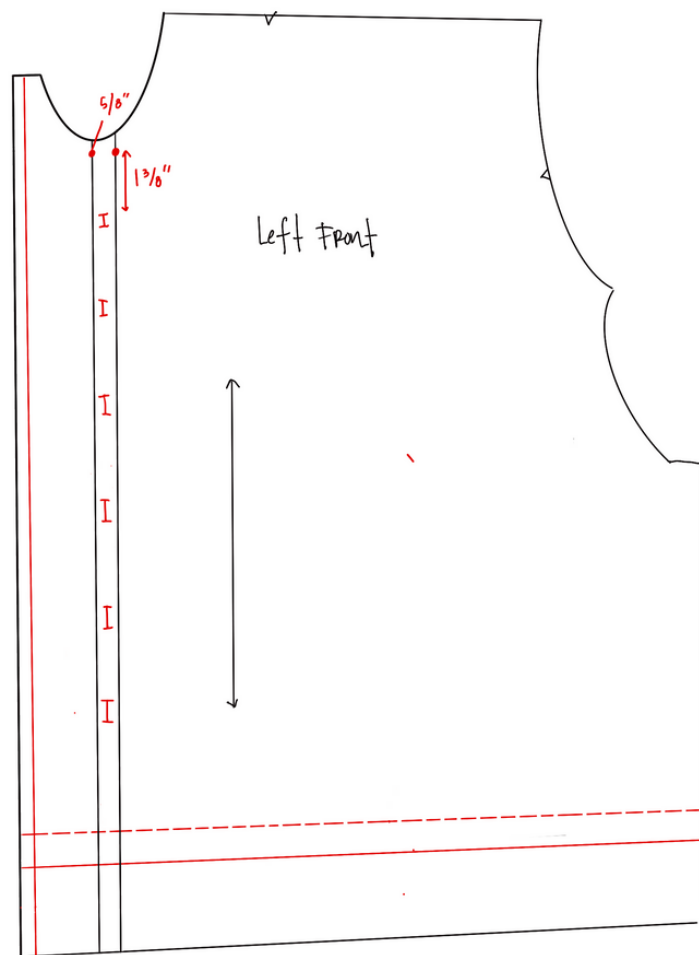


Illustration 3

Back

- Start with entire Back piece.
- At center Back, measure down 1/4" and mark. At shoulder measure over 1/4" and mark. To lower the neckline, use a French Curve to connect markings and create a new neckline curve. (illustration 1)

Right Back

- Draw a line parallel to center back 1" towards left side seam. (illustration 1)
- Mark Left Back Placement Line (illustration 2)
 - At center back, mark a point 4 3/4" from hem foldline of your size and 7 1/4" towards right side seam.
 - From this point, draw one line to center back at neckline and another line to bottom Left Back corner.
- Make a Right Back pattern piece by tracing new center cut line and Left Back placement lines (illustration 3).

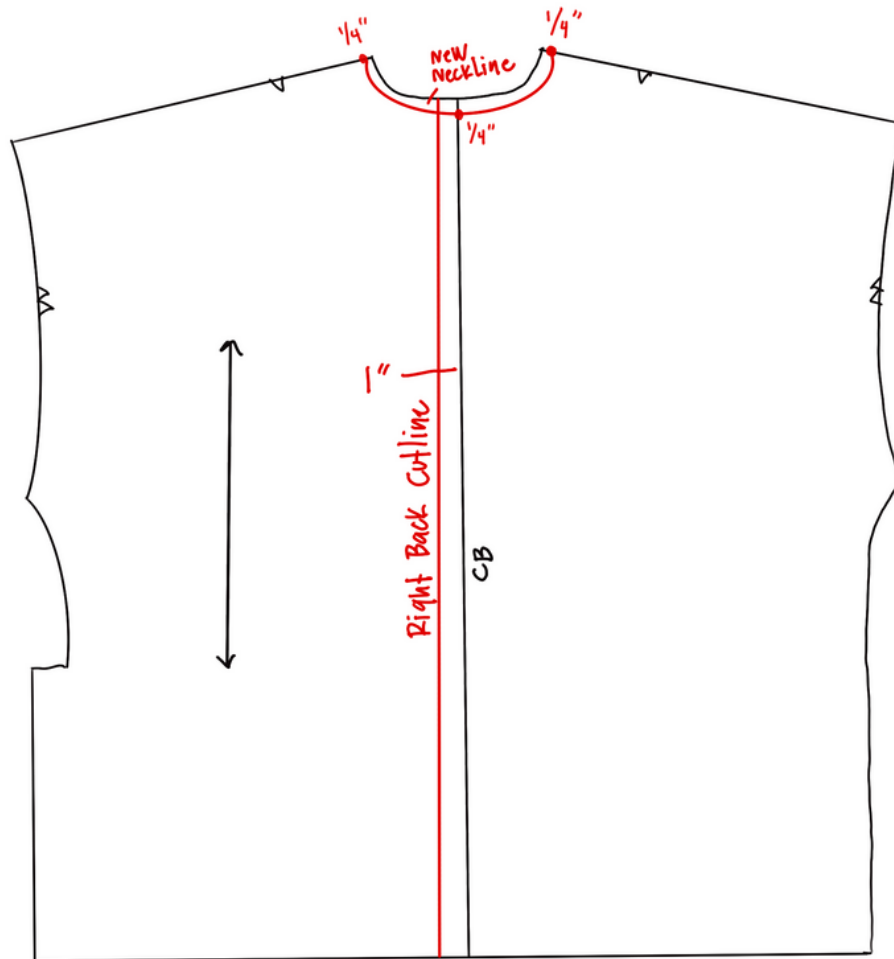
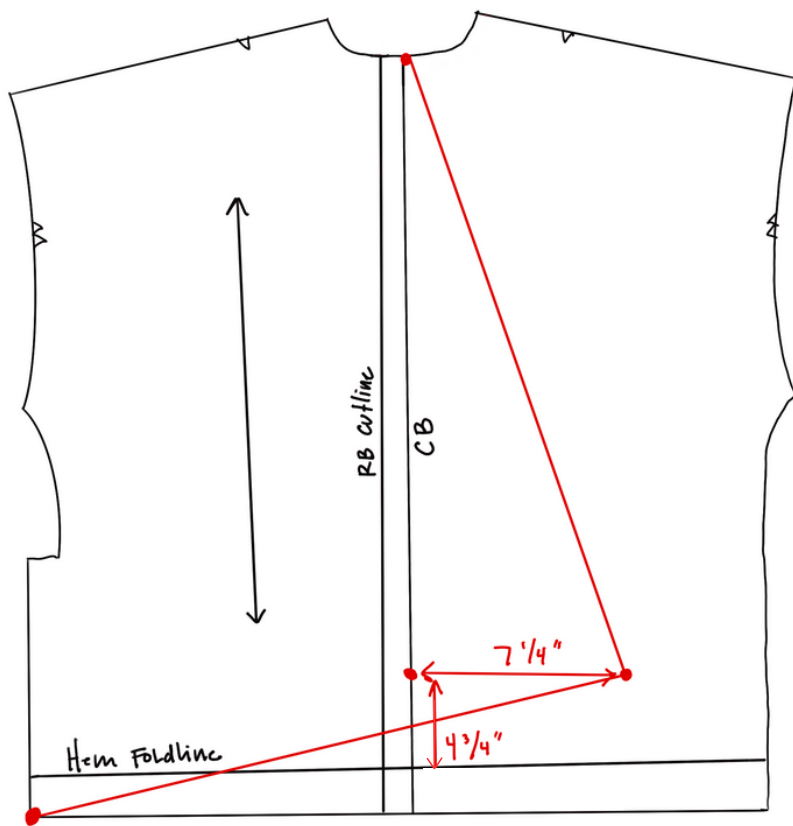


Illustration 1



Right Back Illustration 2

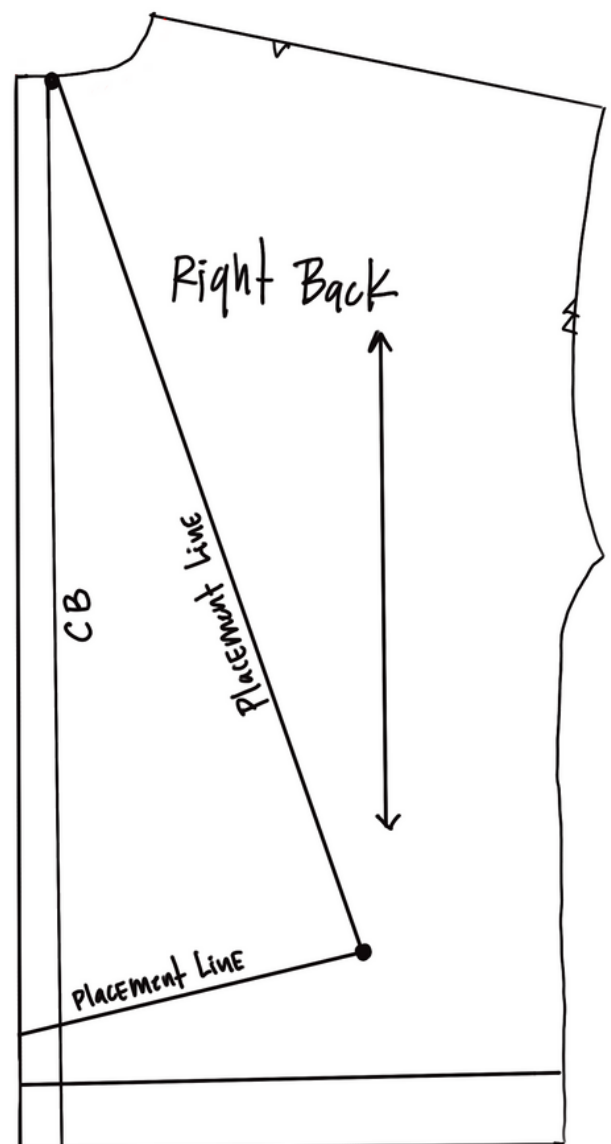


Illustration 3

Left Back

- Trace Left Back section of Back, including placement lines and angled hemline (illustration 4).
- Add a $\frac{5}{8}$ " seam allowance to overlap angle and a $1\frac{1}{2}$ " hem allowance to bottom line.
- Mark a straight of grain line parallel to overlap angle. (illustration 5)
- Fold back seam allowance of overlap angle. True neckline angle of seam allowance. (illustration 5).

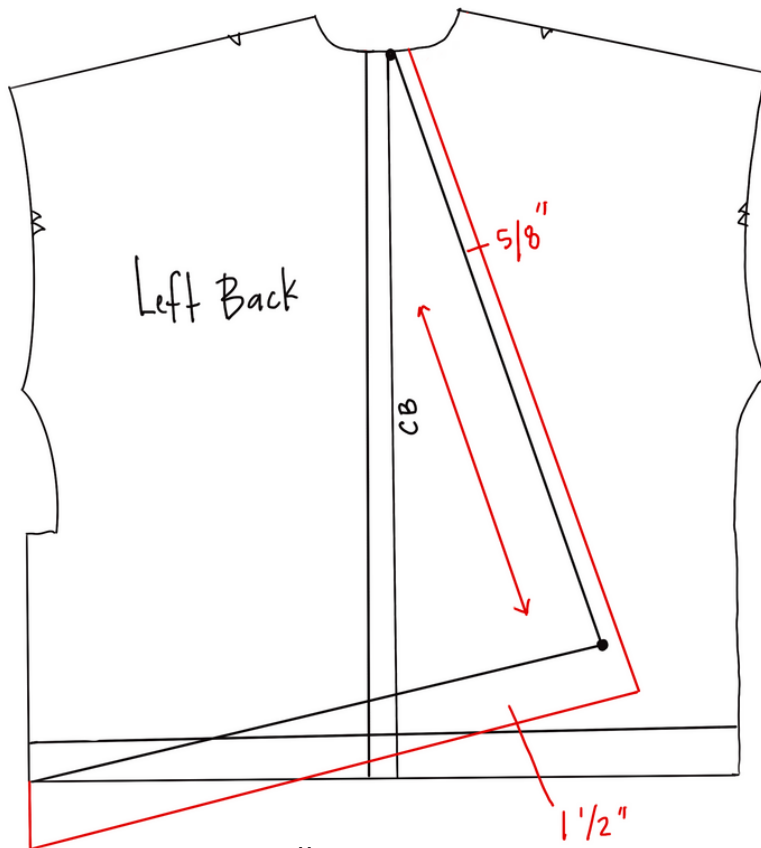


Illustration 4

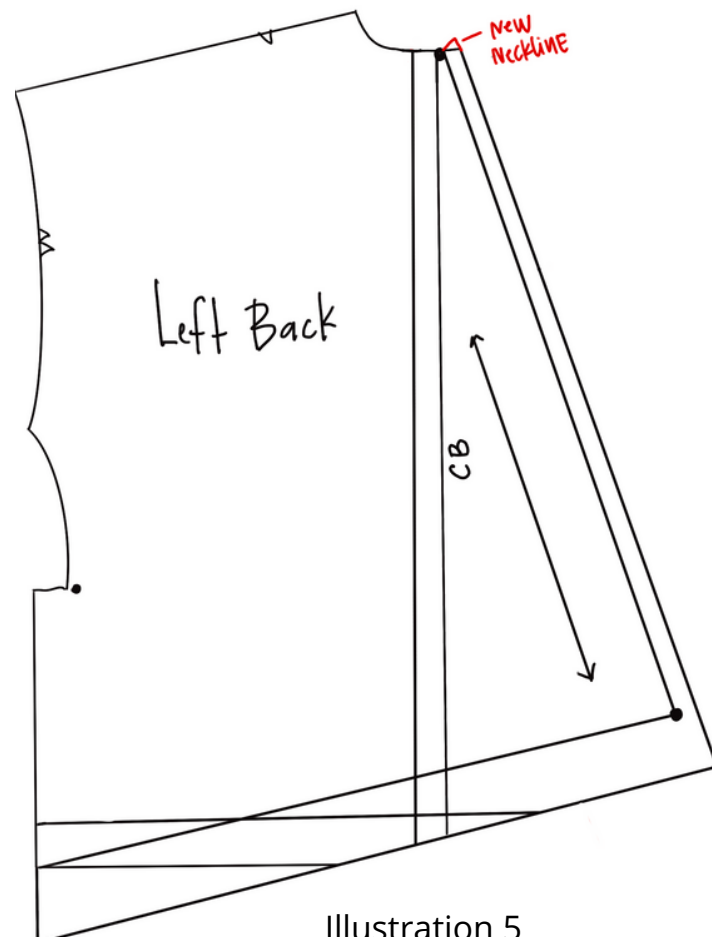


Illustration 5

Right Sleeve

- No changes

Left Sleeve (Upper and Lower)

- Draw a line 6" above hem foldline.
- To make an Upper Left Sleeve, add a $\frac{5}{8}$ " seam allowance below this line. (illustration 1)
- To make a Lower Left Sleeve, add a $\frac{5}{8}$ " seam allowance above this line. (illustration 2)

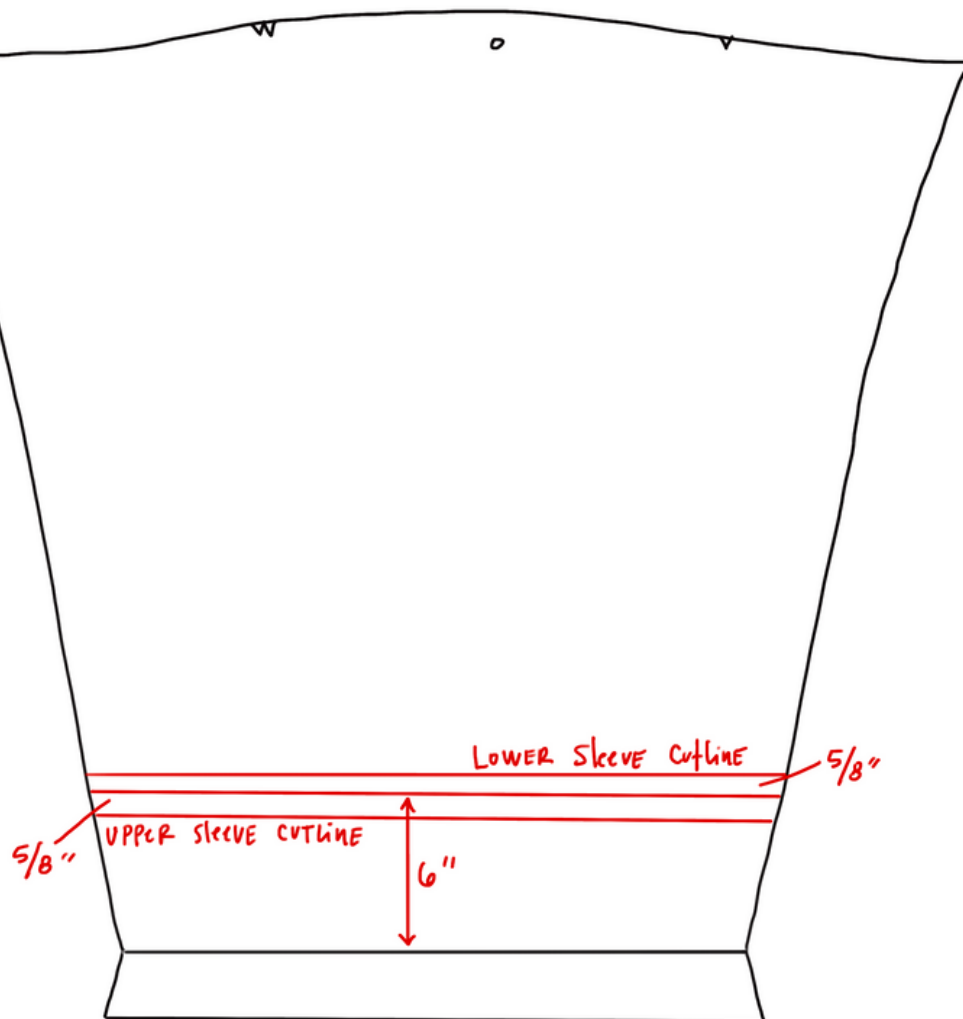


Illustration 1

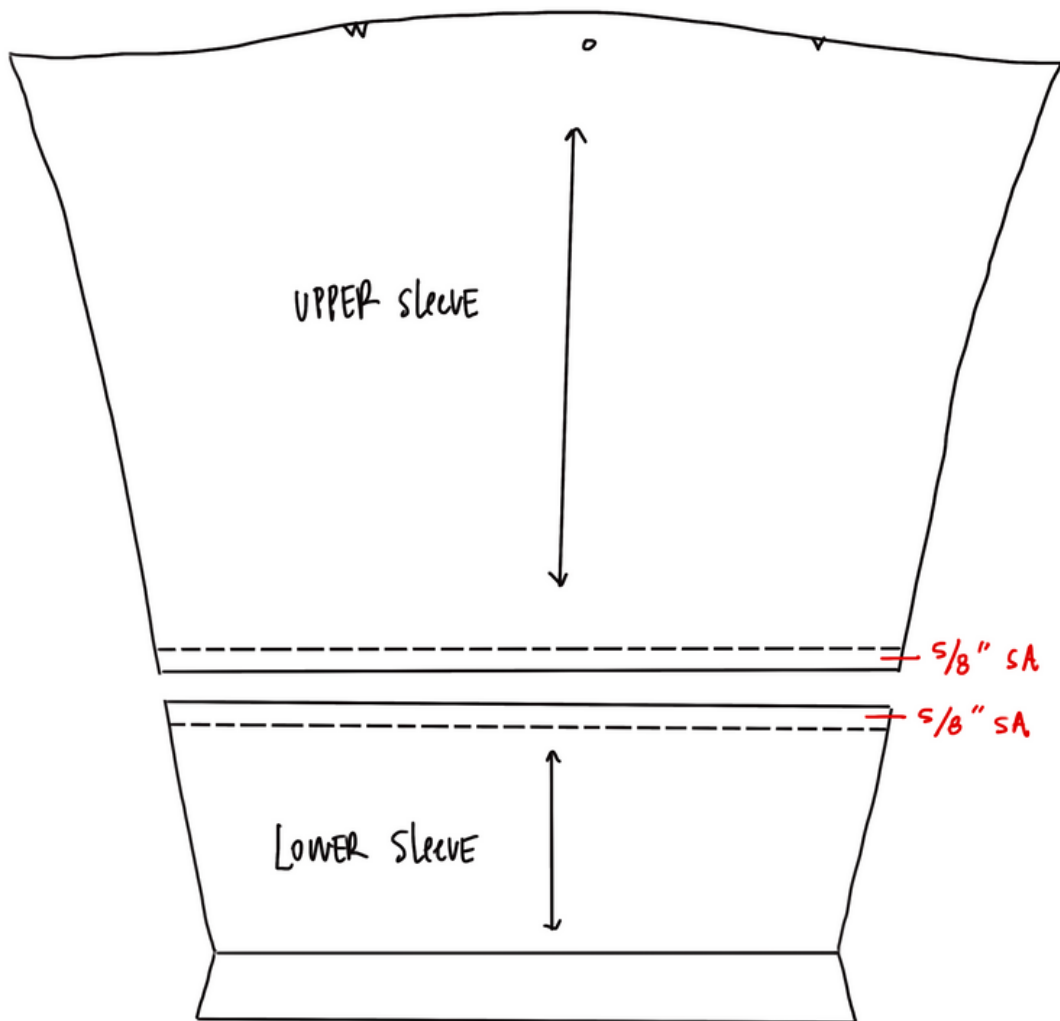
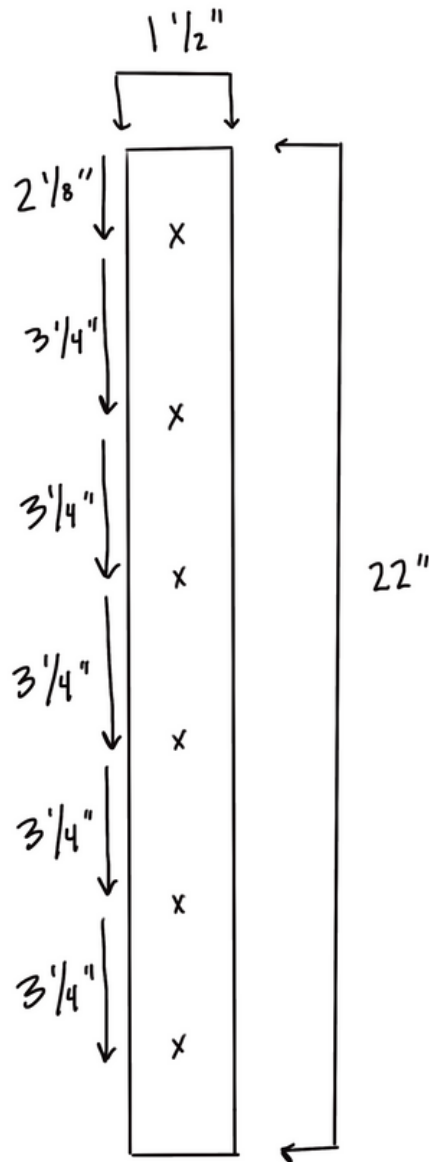


Illustration 2

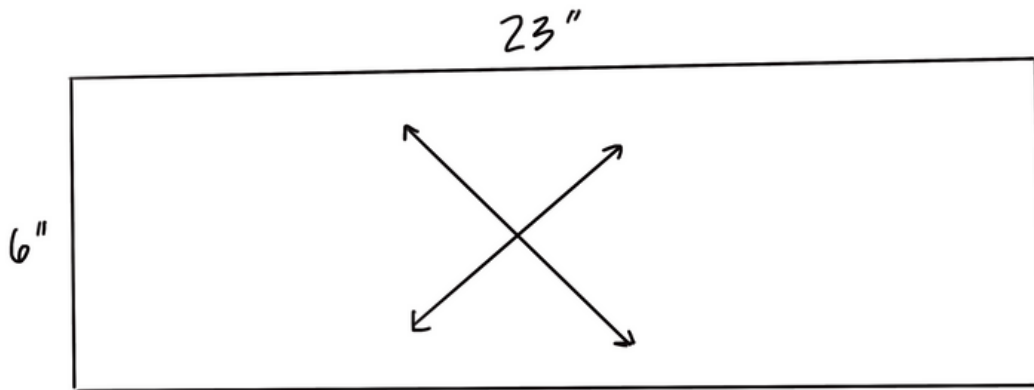
Button Placket

- Make a pattern piece that is 22" long x 1 ½" wide.
- Add button placements - see Right Front.



Collar

- Make a pattern piece that is 23" long x 6" wide for all sizes. Collar will be cut off for each size during construction.
- Mark bias grainlines.



Left Front

1. Staystitch neck
2. Apply interfacing to self facing
3. Press bottom hem, side vent hem and front hem in place - in this order
4. Miter corner
5. Topstitch front facing

Right Front

1. Chalk mark placket placement
2. Interface placket
3. Press 3 placket edges to wrong side $\frac{3}{8}$ "
4. Apply Fusi-Web to placket
5. Fuse placket to wrong side
6. Topstitch placket
7. Press bottom hem
8. Press front facing and topstitch

Right Back

1. Chalk mark left back placement lines
2. Finish center back edge
3. Press center back to wrong side 1" and topstitch
4. Press bottom hem

Left Back

1. Press center back edge $\frac{5}{8}$ " to wrong side
2. Press bottom hem and side vent hem
3. Miter corner
4. Overlap left back to right back on placement lines and topstitch
5. Staystitch neckline

Collar

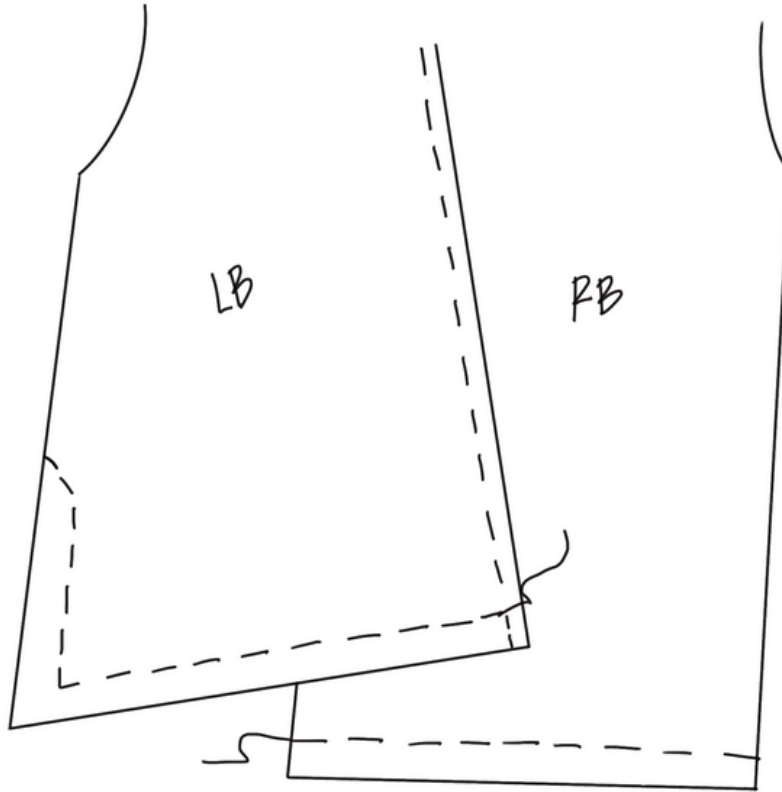
1. Sew shoulder seams and finish
2. Press collar in half lengthwise
3. Press one edge $\frac{5}{8}$ " to wrong side
4. Sew collar to neckline, clipping seam allowance as needed
5. Fold collar right sides together and sew ends, trim excess
6. Turn collar to right side and slipstitch to neckline

Sleeves

1. Sew contrast band to left sleeve and finish
2. Sew sleeves to garment and finish
3. Sew side and sleeve seams and finish
4. Topstitch sleeve hems

Hems

1. Starting at the center front, topstitch the hem of the Right Front and Right Back.
2. Start at the overlap point on the Left Back and begin topstitching. From this point to the edge of the Right Back, you will topstitch through both Left and Right Backs.
3. Continue topstitching the hem through the Left Back, up and around the side vent and across the Left Front, ending at the center front.



Buttons and buttonholes

1. Sew buttonholes
2. Sew buttons

Video Access

The Online Workshop will be posted to your course page on July 7th.

Q&A Access

There will be two Zoom Q&A sessions this month on July 13th at 12:00pm CDT and July 20th at 4:00pm CDT. Check your course page for the meeting link. If you can't join us, the Zoom recording will be uploaded to your course page.

*Thank you for joining us for a year of Pattern RePlay.
Happy sewing,*

Linda & The Sewing Workshop Team

QUESTIONS?

alex@sewingworkshop.com 

(785) 357.6231 

301 S. Kansas Ave. Suite A
Topeka, KS 66604 

sewingworkshop.com 



#swblockprintedriviera
#sewingworkshop
#SC23