

MATERIALS LIST

- Now Shirt digital or printed pattern
- Now Shirt Kit (optional purchase)
 - Or use similar corduroy fabric
 - 60" - All Sizes - 2 ½ yards
- 1 Spool 100% Cotton Thread
- 3 Spools Coordinating Isacord or other overlock thread
- Silk Thread in contrasting color
- 65/9mm Universal Machine Needles
- Hand Sewing Needle
- Needle Threader
- Cutting Shears
- Trimming Scissors or Snips
- Rotary Cutter and Cutting Mat
- Glasshead Silk Pins
- Seam Ripper
- Chakoner
- C-thru 18" Grid Ruler
- Fusi-Web
- Point Presser
- Tracing Wheel
- Tracing Paper
- Edgestitch Foot
- ¼ inch Foot
- Manilla File Folder or Tagboard
- Walking Foot (or engage even feed feature)
- Sleeve Board
- Tweezers
- Seam Gauge
- Thermal Thimbles
- Point Turner
- Press Cloth
- Pattern Paper
- Steam Iron

You will need a sewing machine that has been cleaned and oiled and is in good condition. If your machine also embroiders and has a 9mm throat plate, you may want to invest in a 5mm-wide throat plate. If you have the even feed feature on your machine, engage it. If not, add a walking foot, if possible. We recommend a serger for seam finishes.

Purchase the Pattern

Purchase the printed [Now Shirt Pattern](#) or download the Now Shirt [digital](#) pattern. We recommend printing at home or using a service such as [Sublime Graphx](#).

Course Page Documents to Download:

- How to Install a Sleeve Placket
- Fabric Cutting Layout
- Now Jacket Pocket Sleeve & Patch Pattern Pieces (print at home and tape together)
- Now Jacket Bottom Band & Cuff Measurements

Fabric Preparation

Pre-treat your fabric in the way that you will continue to clean your finished garment. We recommend washing the fabric prior to sewing.

Cutting Out

Cut out the following pieces on a single layer with the nap in the same direction (down).

- 2 Fronts
- Back
- Collar
- 2 Sleeves
- 2 Sleeve Patches
- 2 Sleeve Plackets
- 2 Cuffs
- Bottom Band

Marking

Snip into the seam allowance at the single and double notches. Use tailor's tacks to mark the interior dots.

Video Access

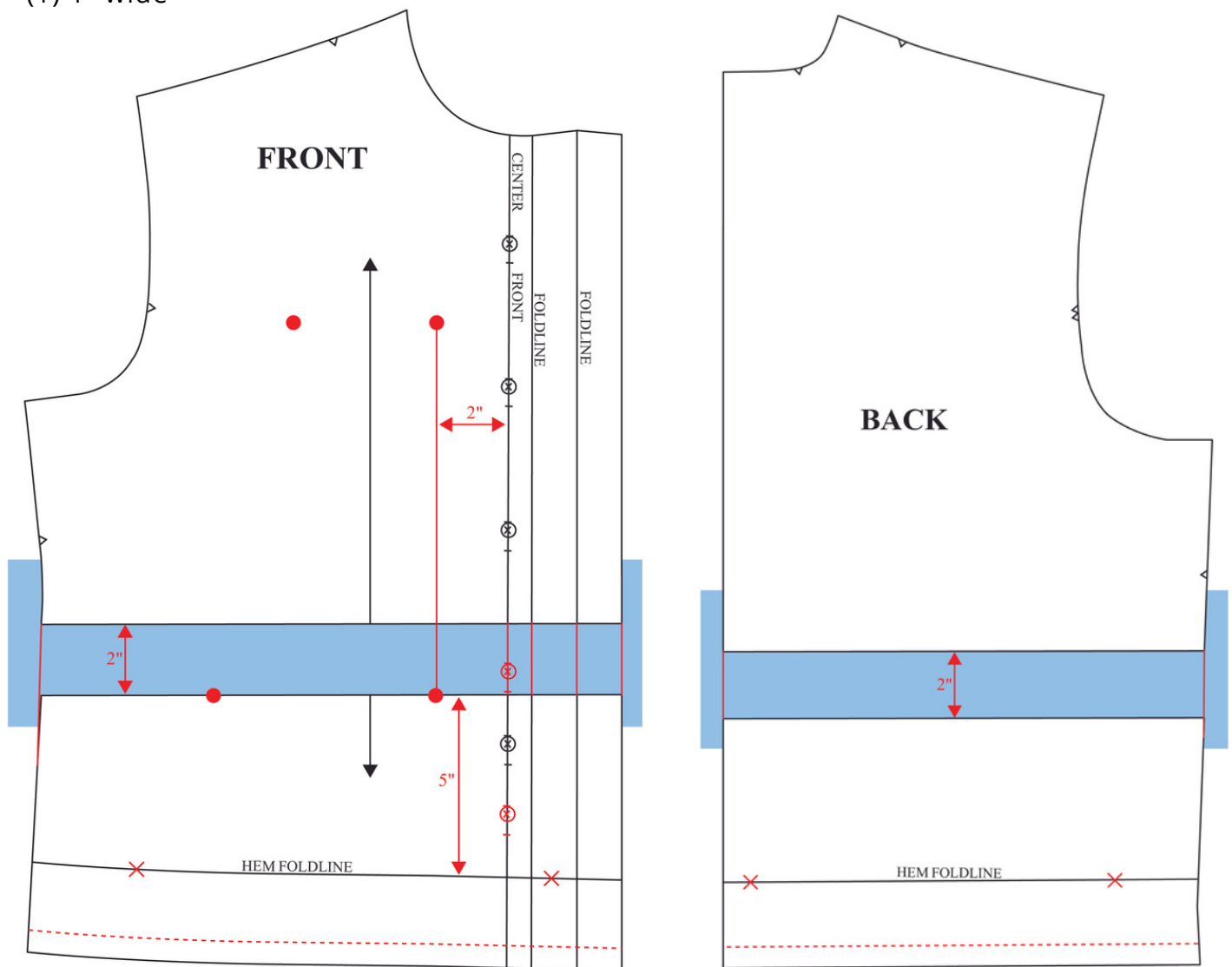
The online workshop will release on your course page on January 6th.

Q&A Access

Zoom Q&A session #1 will be live on January 20th, at 12:00pm CST. Zoom Q&A session #2 will be live on January 26th at 4:00pm CST. Check your course page for meeting links. If you can't join us, the Zoom recording will be uploaded to your course page.

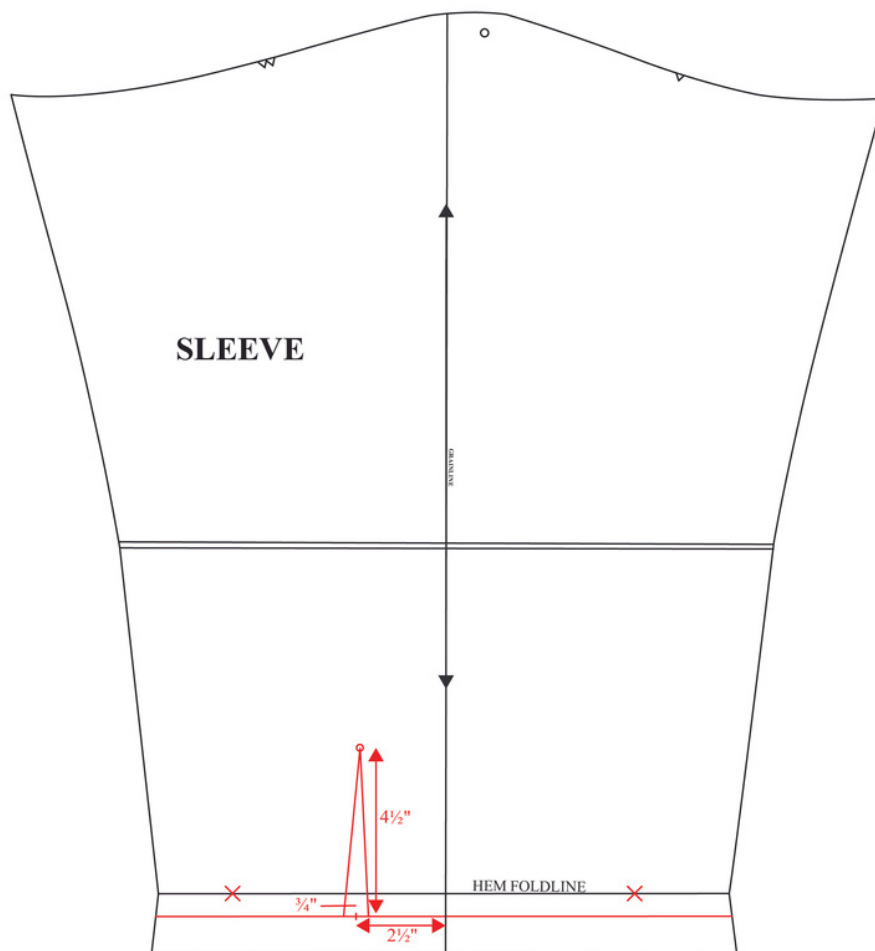
Front & Back

1. Using the lengthen and shorten lines indicated on the pattern, lengthen the Front and the Back 2".
2. Add one more button at the bottom and re-space the bottom two buttons.
3. Ignore the hem allowance foldline and use the bottom cut line of your size as a $\frac{5}{8}$ " seam allowance.
4. Download the Pocket pattern piece.
5. Using the Pocket pattern piece and the measurements as indicated below, position four Pocket placement dots. Pocket placement may be adjusted depending on your size. Before sewing to the Front, pin the Pocket to the Front, stand in front of a mirror and adjust if needed.
6. Cut two pressing templates using tagboard or a manilla file folder.
 - (1) 1 $\frac{1}{4}$ " wide. Draw a line $\frac{5}{8}$ " from one long edge
 - (1) 1" wide



Sleeve & Cuff

1. Delete the hem allowance on the Sleeve pattern.
- Determine your sleeve length. Measure from the top dot to the hem foldline and compare the difference. Lengthen or shorten the sleeve remembering that a 2"-wide cuff will be added to the length. Add a $\frac{5}{8}$ " seam allowance below the hem foldline.
2. To place the center of the Placket opening, find the center of the Sleeve on the bottom cut line (the grainline marking). Measure and mark 2 $\frac{1}{2}$ " to the left towards the Sleeve Back. Using the mark as the center of the opening, draw a dart shape $\frac{3}{4}$ " wide at the bottom and 4 $\frac{1}{2}$ " high.
3. Make a pattern piece for the Sleeve Placket that is 2" X 10 $\frac{3}{4}$ ". Mark bias straight of grain lines.
1. Download the Sleeve Patch pattern piece from your course page.
2. Cut a tagboard pressing template of the Sleeve Patch minus the $\frac{3}{8}$ " seam allowances. This is demonstrated in your video.
3. Make a pattern piece for the Cuff that is 5 $\frac{1}{4}$ " wide X the length for your size (refer to the chart below). Draw a straight of grain line.



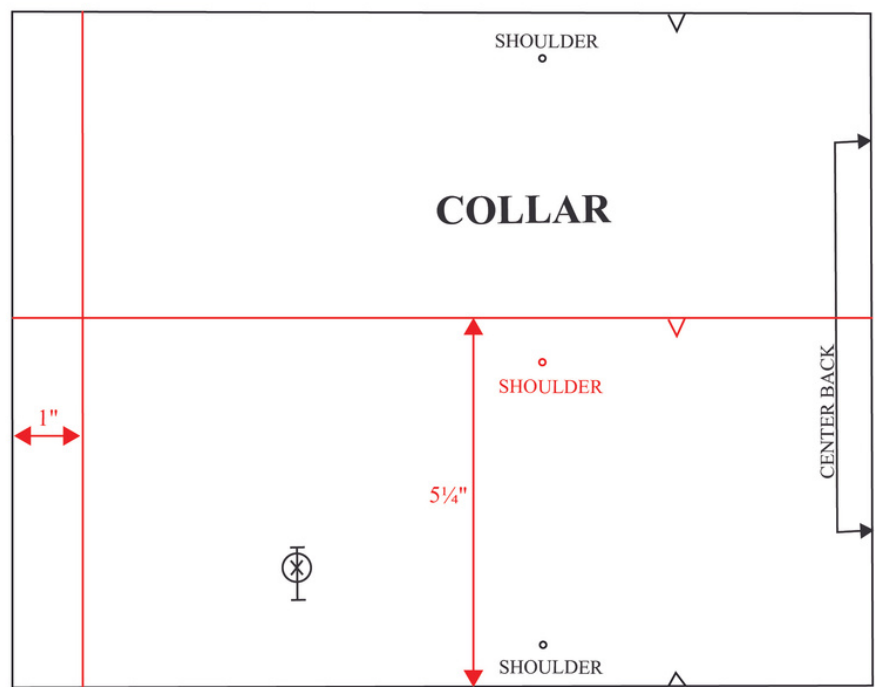
NOW JACKET — SLEEVE CUFF MEASUREMENTS

SIZE	XS	S	M	L	XL	XXL	
SLEEVE CUFF (5 $\frac{1}{4}$ " width)	12 $\frac{3}{8}$	12 $\frac{5}{8}$	13 $\frac{1}{8}$	13 $\frac{3}{4}$	14 $\frac{1}{2}$	15 $\frac{1}{4}$	INCHES

5 1/4"	CUFF	XS				
		S				
		M				
		L				
		XL				
		XXL				
12 2 1/2"	12 2 1/2"	13 3/8"	13 3/4"	14 1/2"	15 1/4"	

Collar

1. Use the original Now Shirt pattern piece for the Collar. Remove 1" from the front edge and reduce the width to 5 ¼".



Bottom Band

1. Make a pattern piece that is 5 ¼" wide X the length for your size (see chart below). Draw a straight of grain line.

NOW JACKET – BOTTOM BAND MEASUREMENTS

SIZE	XS	S	M	L	XL	XXL	
BOTTOM BAND (5¼" width)	43¼"	45¼"	47¼"	49¼"	52¼"	55¼"	INCHES



Construction Basics

Seam finish for corduroy

- Stitch $\frac{5}{8}$ " seam.
- 3-thread serge finish the raw edges together and press in one direction.

Topstitching technique

- Using an edgestitch foot, stitch a row of stitching along an edge.
- Using a presser foot with a $\frac{1}{4}$ " toe, sew a second row of stitching $\frac{1}{4}$ " from the first.

Order of Construction

All of the techniques below are demonstrated in the video.

1. Construct the Pockets

- Press hems and seam allowances to the wrong side and apply Fusi-Web.
- Topstitch Pocket openings at $\frac{7}{8}$ ".
- Fuse Pockets to each Front matching dots.
- Topstitch Pockets to Fronts.

2. Press center front hems to the wrong side making double 1 $\frac{1}{4}$ " hems.

- Topstitch hems along inside edge.

3. Sew Fronts to Back at shoulder seams. Finish seams and press towards Back.

4. Sew side seams. Finish and press towards Back.

5. Staystitch neck edge.

6. Construct Collar

- Press in half lengthwise with the wrong sides together.
- Press $\frac{5}{8}$ " to wrong side along one edge. Make sure nap of corduroy is going in the correct direction on the outer side of the collar. Apply Fusi-Web along turned-back edge.
- Clip the seam allowance of the neck edge.
- Sew the Collar to the neck, extending Collar $\frac{5}{8}$ " beyond each finished center front edge. Trim the seam and press towards the Collar.
- Fold the Collar back on itself with right sides together at each end and sew the ends even with the center front. Trim the seam, turn and press.
- Fuse the inside edge of the Collar to the neck just covering the seam. Slipstitch (optional).
- Topstitch along the neck seam.

1. Construct Sleeves.

- Use the Sleeve Patch pressing template to press $\frac{3}{8}$ " seam allowances to the wrong side. Apply Fusi-Web over the edges of the seam allowances.
- Matching the dots of the placket opening, fuse the Sleeve Patch to each Sleeve.
- Topstitch the Sleeve Patch to each Sleeve.
- Staystitch the "V" shape of the placket openings.
- Follow the instructions in the downloadable document called, "How to Install a Sleeve Placket" on your course page to complete the installation of the Sleeve Placket.

- Repeat the instructions for applying the Collar to attach each Cuff making sure the nap is in the correct direction. Topstitch at the top of the Cuff along the seam line.
- Sew a line of basting stitches along the seamline of the Sleeve cap between the notches.
- Sew the Sleeve seam, finish and press towards the back.
- Pull the bobbin thread of the basting stitches slightly to ease the sleeve cap.
- Sew the Sleeves to the garment and finish the seams.

8.Repeat the instructions for the Collar to sew the Bottom Band to the garment making sure the nap is in the correct direction.

9.Sew vertical buttonholes on the center front and horizontal buttonholes on the Collar, Cuffs, and Bottom Band.

10.Sew on the corresponding buttons.

*Thank you for joining us for a year of Pattern RePlay.
Happy sewing,*

Linda & The Sewing Workshop Team

QUESTIONS?

alex@sewingworkshop.com 

(785) 357.6231 

301 S. Kansas Ave. Suite A
Topeka, KS 66604 

sewingworkshop.com 



#swnowjacket
#sewingworkshop
#SC23