

MATERIALS LIST

- Now Shirt [digital](#) pattern
- [Pintucked Now Jacket Kit](#) (optional purchase)
 - Or use similar fabric:
 - 54" - All Sizes - 2 ¾ yards
 - Bias Binding: 1 Fat Quarter each of 3 colors
- Lightweight Fusible Interfacing
- 6 Buttons
- 1 Spool 100% Cotton Thread
- Metallic Thread for Pintucks
- 3 Spools Coordinating Isacord or other overlock thread
- [Silk Thread](#) in contrasting color
- [65/9mm Universal Machine Needles](#)
- [70/10 Microtex Machine Needles](#)
- [80/12 Metallic Machine Needles](#)
- [Hand Sewing Needle](#)
- [Needle Threader](#)
- [Cutting Shears](#)
- Trimming Scissors or [Snips](#)
- [Rotary Cutter](#) and Cutting Mat
- [Glasshead Silk Pins](#)
- [Seam Ripper](#)
- [Chalk Pencil](#)
- [C-thru 18" Grid Ruler](#)
- [Fusi-Web](#)
- [Buttonhole Cutter Set](#)
- Edgestitch Foot
- Clear Presser Foot (or Toe ¾" wide)
- Manilla File Folder or Tagboard
- 36" Long Ruler
- [Sleeve Board](#)
- [Tailors' Ham](#)
- [Seam Gauge](#)
- Steam Iron

You will need a sewing machine that has been cleaned and oiled and is in good condition. If your machine also embroiders and has a 9mm throat plate, you may want to invest in a 5mm-wide throat plate. If you have the even feed feature on your machine, engage it. If not, add a walking foot, if possible. We recommend a serger for seam finishes.

Purchase the Pattern

Purchase the printed [Now Shirt Pattern](#) or download the Now Shirt [digital](#) pattern. We recommend printing at home or using a service such as [Sublime Graphx](#).

Course Page Documents to Download:

- Narrowing Shoulders PDF
- Pintucked Now Jacket Fabric Layout PDF

Fabric Preparation

Silk shantung is a crisp fabric with a slight sheen. It has little drape and retains its shape nicely. If you prefer a drapery version of this fabric with less shine, wash and dry the fabric. Pre-wash a small sample to compare and make your choice.

Cutting Out

Watch the video for instructions to cut out the first Front and Back pieces. After the pieces are pintucked, you will re-cut the pieces to finalize the size and shape before constructing the garment. We always recommend cutting out single layer. You may prefer using long shears when gutting silk rather than a rotary cutter. Try both and see which you prefer. Cut out the following pieces using a single layer and placing the pieces in the same direction on the fabric.

- 2 Fronts + 1" extra along the side seams and armholes
- 2 Front Facings
- 1 Back
 - Cut a rectangle at least 5" wider than the widest part of the pattern and 2" higher than the highest part of the pattern.
- 2 Sleeves
- 2 Sleeve Facings
- 2 Collars

Marking

Snip into the seam allowances at the single and double notches.
Use tailor's tacks to mark the interior dots.

Samples

As indicated in the video, it is recommended that you make samples of the pintucks. There are tips and troubleshooting ideas in the video to help you get good results.

Faux Bias Binding

Cut enough 2"-wide strips of silk doupioni on the bias to make enough length to bind the two center fronts, the top edge of the collar and the bottom of both sleeves. This is approximately 120" (3 ½ yards). This process is explained in the video.

Pressing Templates

Cut 2 pieces of tagboard or manilla file folder material in the following lengths:

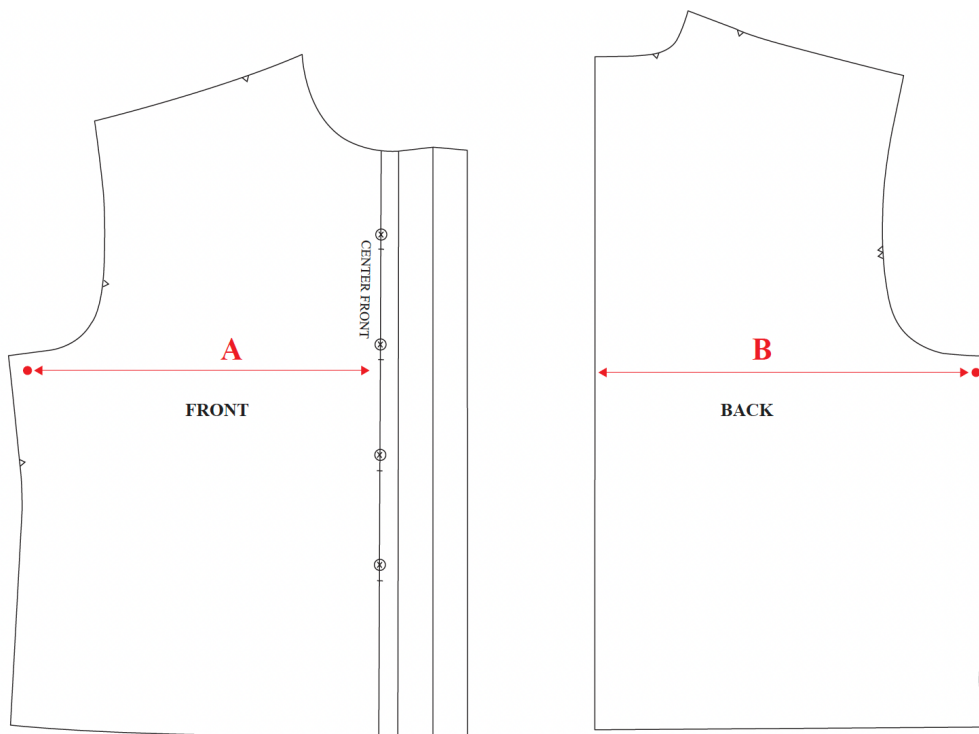
- 1 - 1 5/8" X 11 1/2"
- 1 - 1 1/4" X 11 1/2"

Fitting

Measure your full bust. The measurement chart is included here and on your course page. Measure the circumference of the pattern on that size (see attached drawing) and compare the two measurements. Allow at least 6" of ease in the bust. Linda prefers 8". Start with a size that has this amount of ease and adjust the shoulders as needed.

NOW SHIRT FINISHED GARMENT MEASUREMENTS

SIZE	XS	S	M	L	XL	XXL	
BUST	41 ³ / ₄	43 ³ / ₄	45 ³ / ₄	47 ³ / ₄	50 ³ / ₄	53 ³ / ₄	INCHES
HIP	40	42 ¹ / ₄	44 ¹ / ₄	46 ¹ / ₂	49 ¹ / ₂	52 ¹ / ₄	INCHES
LENGTH (Center Back)	20 ¹ / ₂	20 ³ / ₄	21	21 ¹ / ₄	21 ³ / ₄	22 ¹ / ₄	INCHES



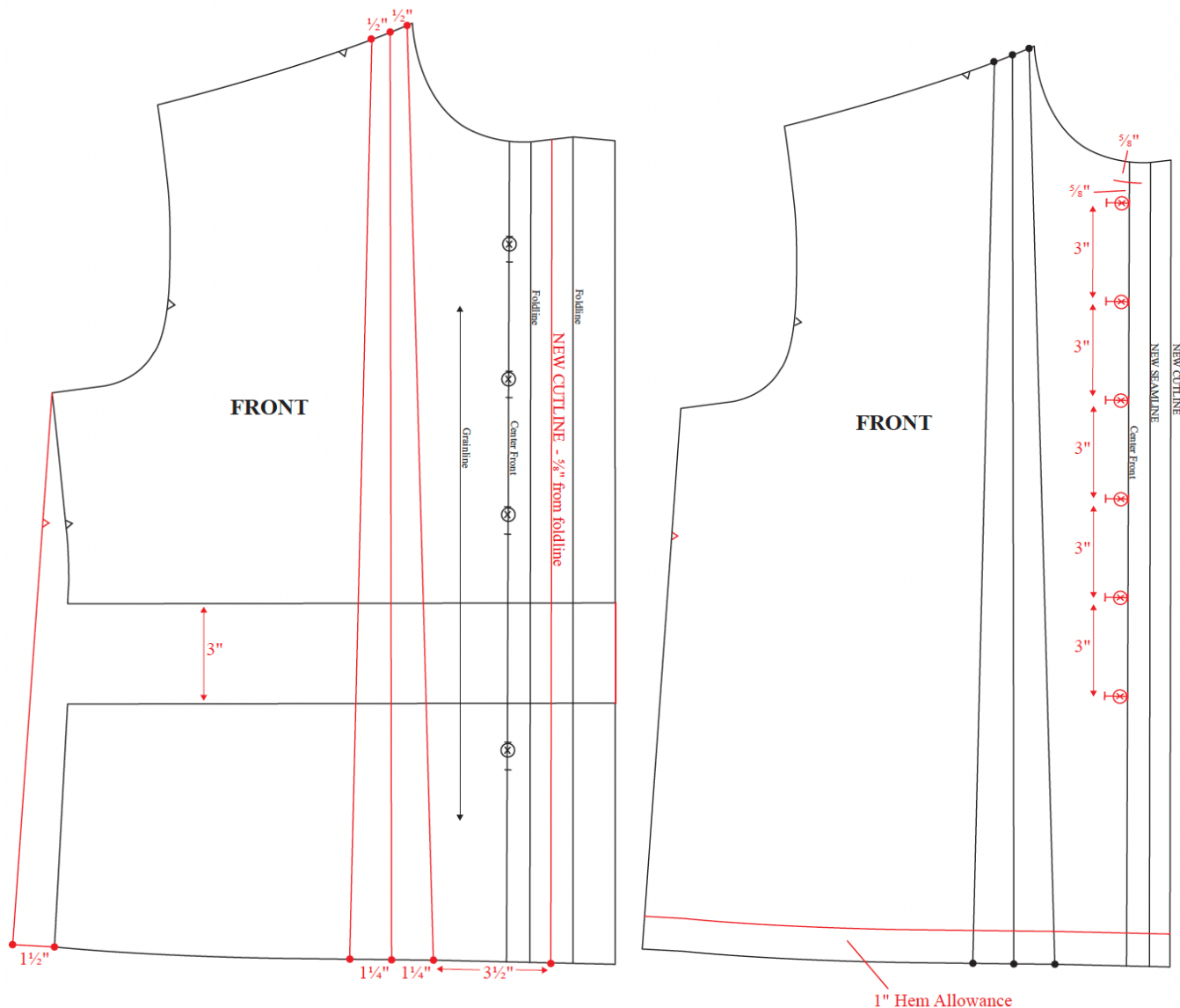
$$\text{BUST} = (A + B) \times 2$$

The shoulder seam drops approximately 1" below the shoulder point on this pattern. If you prefer a sleeve with no drop, see the Narrowing Shoulders PDF in your course page that illustrates how to narrow shoulders. Pin your pattern pieces together at the shoulders and try it on. This is called pin fitting. Adjust the shoulder width from this assessment. Or make a muslin if you prefer.

Lengthen or shorten the sleeve pattern after you have determined the shoulder width and made any adjustments.

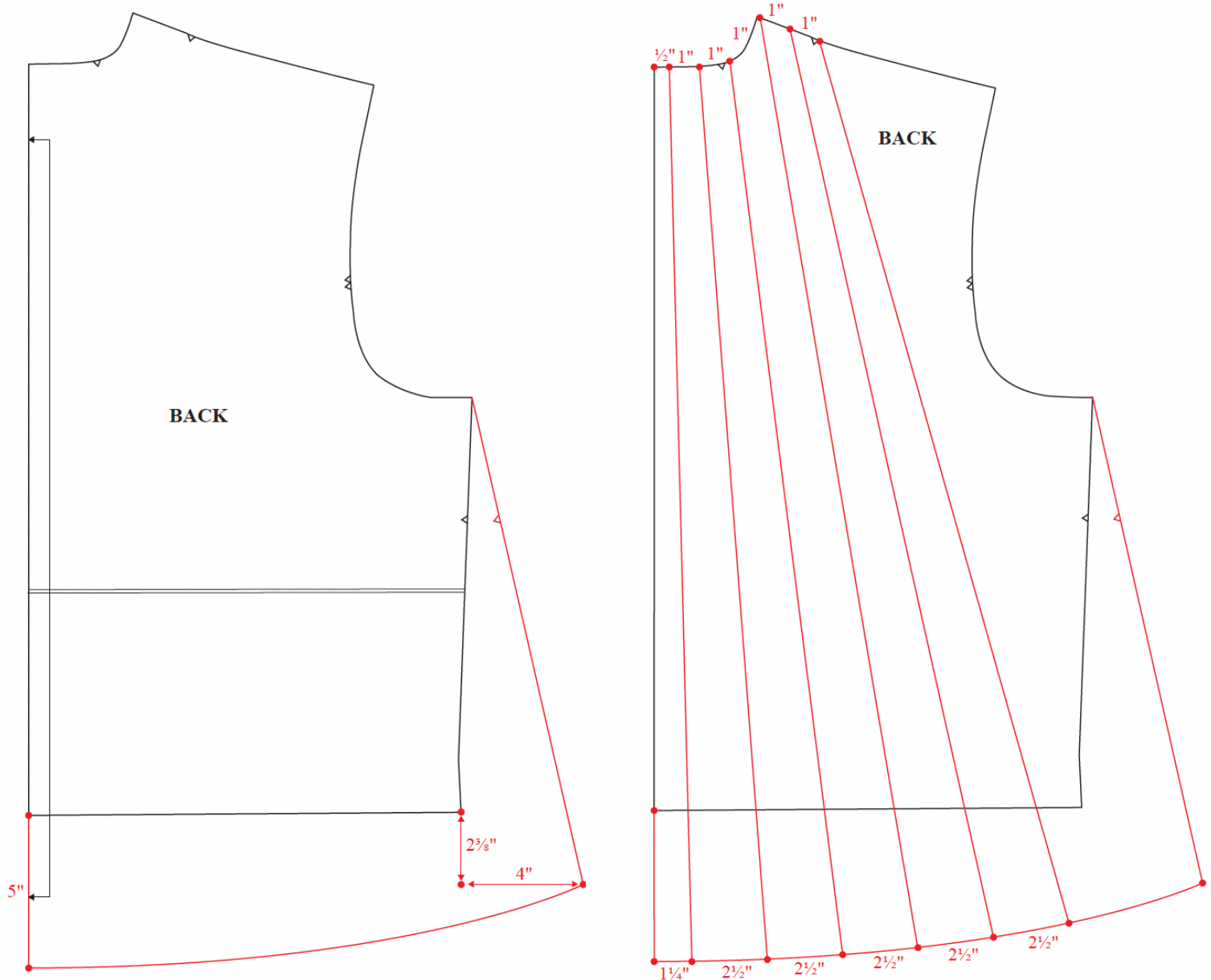
Front

- Use the lengthen and shorten line to lengthen the Front 3".
- Add 1 ½" to the width at the bottom of the side seam. Connect this new point to the original underarm point.
- Draw a new center front cutting line ⅝" from the inner foldline.
- Refer to the illustration to mark the pintuck points along the bottom cut line and the shoulder. The tucks are 1 ¼" apart along the bottom and ½" apart at the shoulder. Use a long ruler to draw lines connecting these points.
- Note bottom hem allowance of 1".
- Re-position button and buttonhole markings starting at ⅝" below the neck seam allowance and spacing six buttons 3" apart. The buttonholes will be sewn perpendicular to the center front rather than vertically as originally marked.
- Make a new Front Facing pattern piece 2" wide X the length of the center front. You will cut two Front Facings.



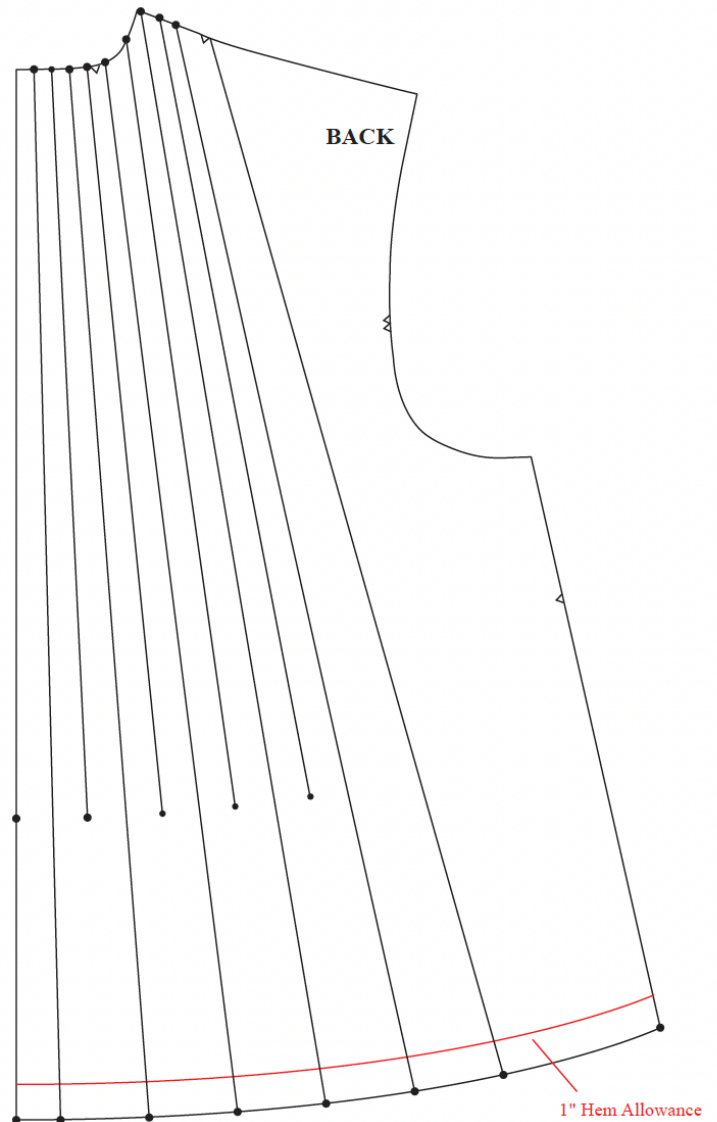
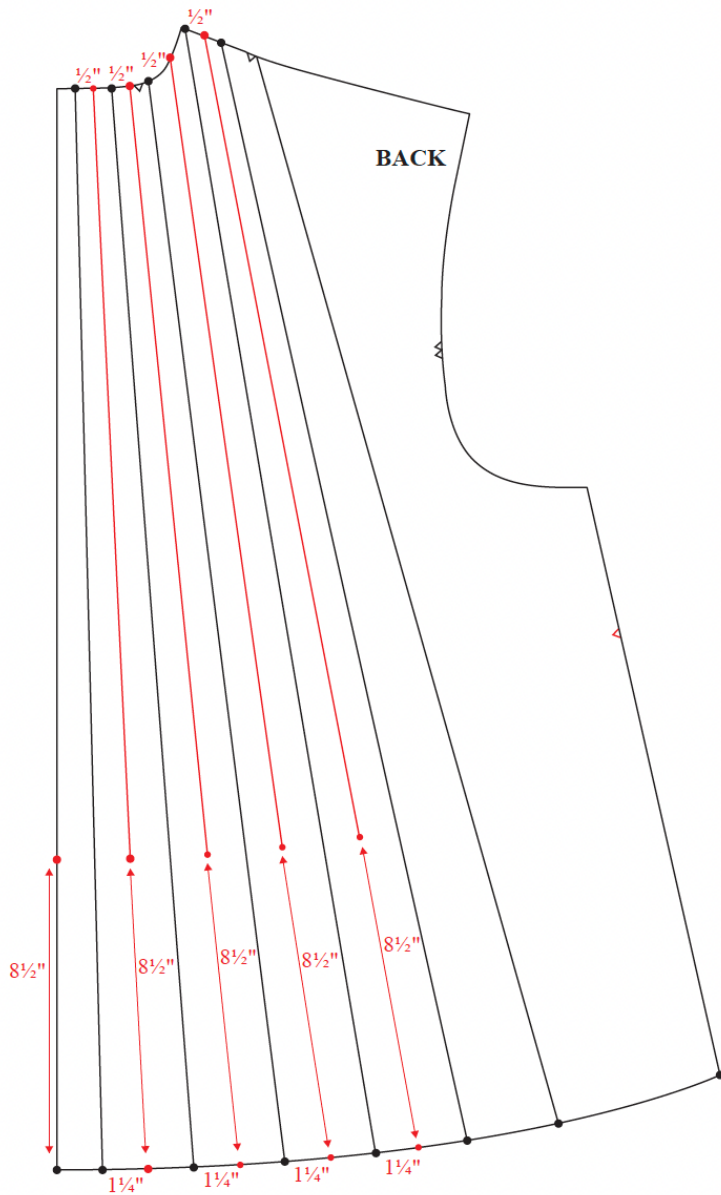
Back

1. Lengthen the pattern 5" at the center back.
2. Measure down $2\frac{3}{8}"$ and 4" across from the bottom side seam point. Connect this new point to the original underarm point.



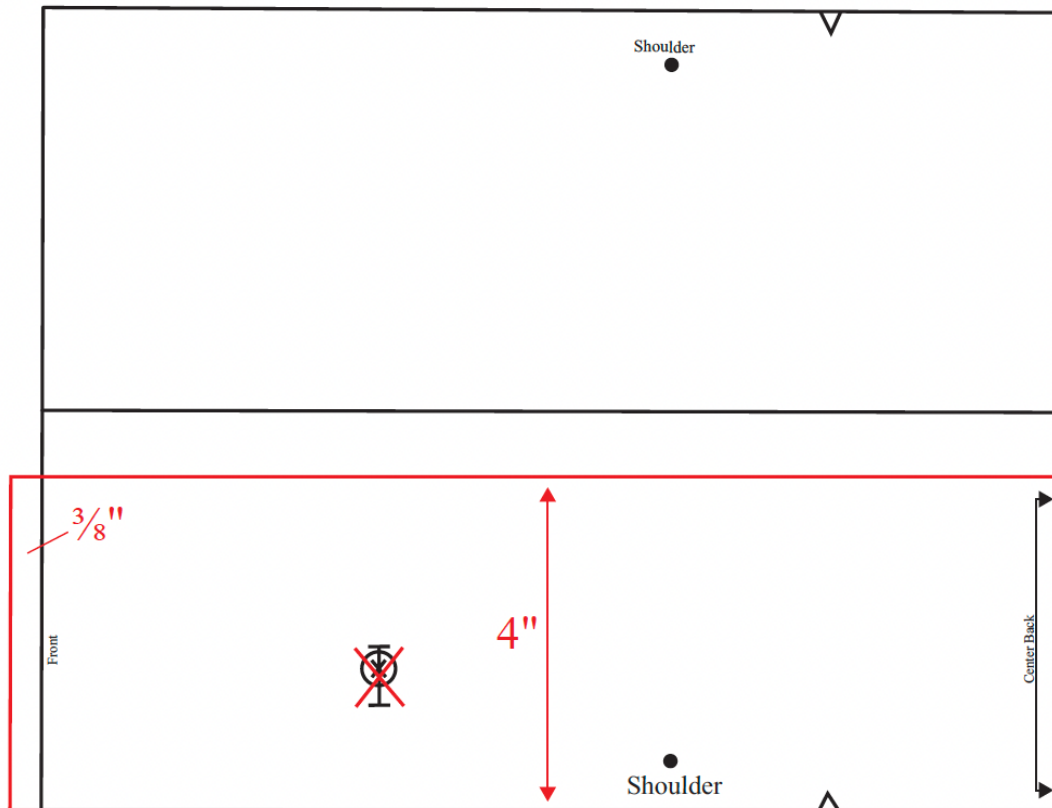
3. To mark the shorter pintucks, refer to the illustration to measure and mark $8\frac{1}{2}$ " from the bottom. There are fewer short pleats than long pleats. Use a long ruler to draw lines connecting these points. Compare Back side seam to Front side seam. Adjust if necessary to ensure the lengths match.

4. Note bottom hem allowance of 1".



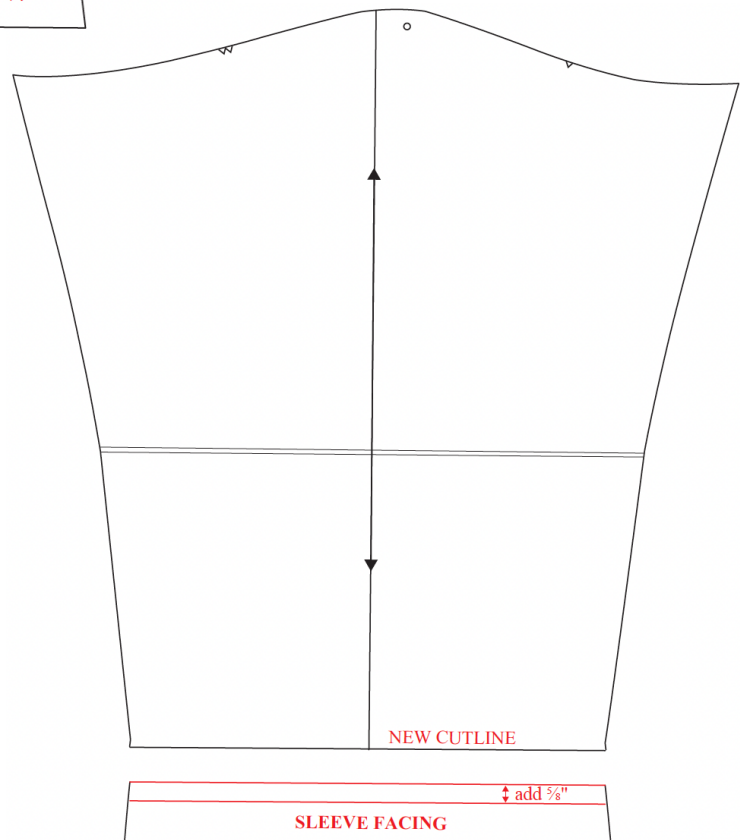
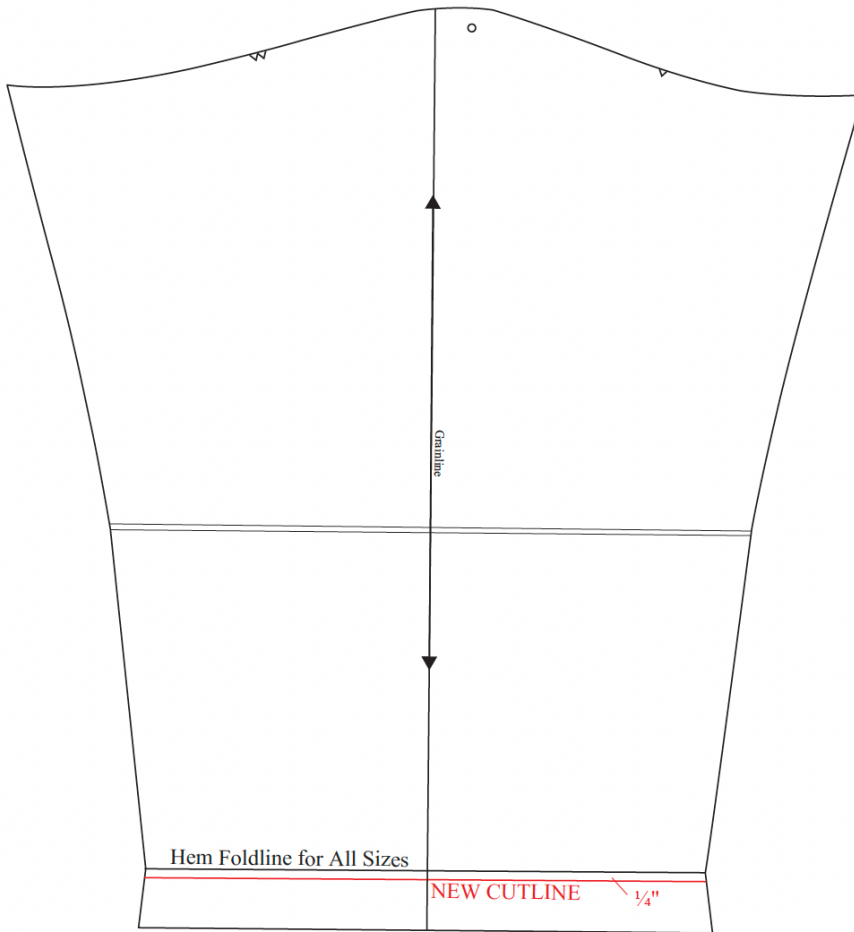
Collar

1. Using the original Collar pattern piece, mark a line 4" from one long edge. Add $\frac{3}{8}$ " to the end. Delete the button/buttonhole designation. You will cut two Collars on the fold.



Sleeve

1. Add $\frac{1}{4}$ " below the hem foldline and draw a new cut line.
2. Use the original Sleeve hem allowance that you have removed to make a Sleeve Facing. Add $\frac{5}{8}$ " to the top for a width of 2".



Construction Basics

- Stitch $\frac{5}{8}$ " seam
- 3-thread serge finish the raw edges together and press in one direction

Order of Construction

1. Sew pintucks on the two Fronts and the Back.
2. Re-cut the Fronts and Back to the pattern shape.
3. Apply Faux Bias Binding to center fronts (with Facings), bottom of Sleeves (with Facings) and Collar.
4. Sew Shoulder seams.
5. Staystitch neck and install Collar.
6. Sew Sleeve and side seams.
7. Slipstitch bottom hem and Sleeve Facings.
8. Sew buttonholes and buttons.

Video Access

The online workshop will release on your course page on February 3rd.

Q&A Access

Zoom Q&A session #1 will be live on February 10th, at 12:00pm CST. Zoom Q&A session #2 will be live on February 23rd at 4:00pm CST. Check your course page for meeting links. If you can't join us, the Zoom recording will be uploaded to your course page.

*Thank you for joining us for a year of Pattern RePlay.
Happy sewing,*

Linda & The Sewing Workshop Team

QUESTIONS?

alex@sewingworkshop.com 

(785) 357.6231 

301 S. Kansas Ave. Suite A
Topeka, KS 66604 

sewingworkshop.com 



#swpintuckednowjacket
#sewingworkshop
#SC23