

MATERIALS LIST

- [Riviera](#) digital pattern (View A)
- [The Riviera Pullover Kit](#) (optional purchase)
 - Or use similar fabrics (All Sizes)
 - 45" wide: 3½ yards fabric
 - Or use similar fabrics (All Sizes)
 - 58" wide: 2¼ yards fabric
- 4 Buttons (4th button is optional)
- 1 spool Cotton Thread
- 3 Spools Coordinating Isacord or other overlock thread
- [Silk Thread](#) in contrasting color
- Hand Sewing Needle
- [Prismacolor Carmine Red 20045 pencil with eraser](#)
- [French Curve](#)
- [Extra Long Ruler](#)
- Scotch Removable tape
- [Cutting Shears](#)
- Pattern Paper or Tissue Paper
- [Rotary Cutter and Cutting Mat](#)
- [Trimming Scissors or Snips](#)
- [Glasshead Pins](#)
- [Seam Ripper](#)
- [Seam Gauge](#)
- [C-Thru Grid Ruler](#)
- [Fusi-Web](#)
- [Walking Foot](#)
- [Point Turner and Point Presser](#)
- [Edgestitch Foot](#)
- [Buttonhole Foot](#)
- [Buttonhole Cutter](#)
- [Manilla File Folder or Tagboard](#)
- [Sleeve Board](#)
- [Tailor's Ham](#)
- [Chakoner](#)

You will need a sewing machine that has been cleaned and oiled and is in good condition. If your machine also embroiders and has a 9mm throat plate, you may want to invest in a 5mm-wide throat plate. If you have the even feed feature on your machine, engage it. If not, add a walking foot, if possible. We recommend a serger for seam finishes.

Purchase the Pattern

Purchase the digital Riviera pattern. You can now select for us to print the pattern for you from our in-house printing service.

Fabric Preparation

Pre-wash a small sample of the fabric. If you're happy with the result, wash your yardage.

Pattern Pieces Needed from Original Pattern

- Back 3
- Left Front 2
- Right Front 1
- Sleeve 7

New Pattern Piece

- Bias Collar

Pressing Templates Needed

- 3"
- 2"
- 2¼"
- 1⅞"
- 1½"
- 1⅛"

Fitting

The Riviera is a loose-fitting shirt that is available in sizes XS-XXL.

Measure your full bust. The Riviera measurement chart is included here. Measure the pattern on that size and compare the two measurements. The amount of ease you add is a personal choice based on your shape and how you like garments to fit.

For instance, we recommend allowing 6" to 8" of ease in the bust for a blouse or shirt. Start with a size that has this amount of ease and adjust as needed. Consider using the [Fashion Fitting Encyclopedia](#) for reference.

References to Consider:

[Fitting the Bust Download Tutorial](#)

[Fitting Shoulders Download Tutorial](#)

Finished Measurements (inches)

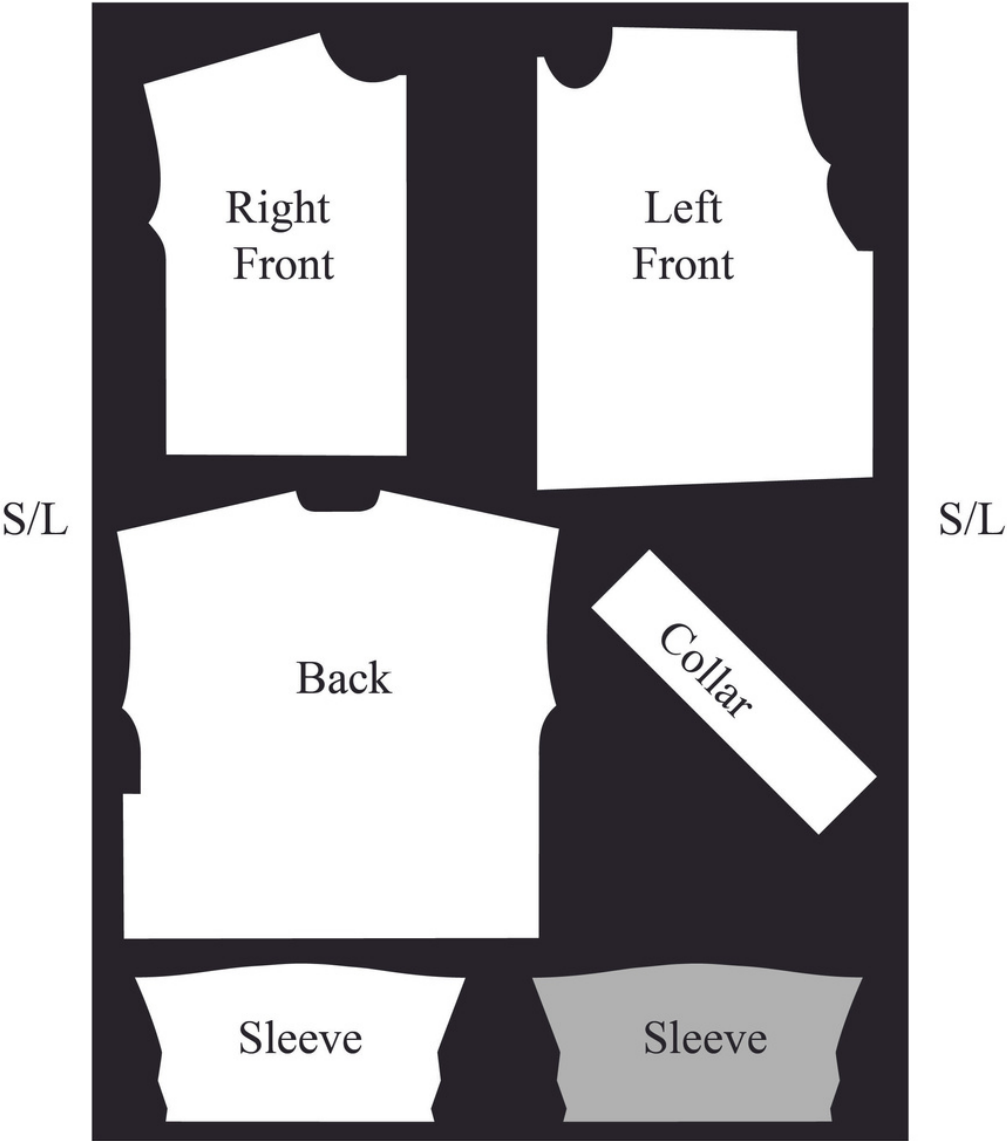
Finished Center Back

	XS	S	M	L	XL	XXL
View A	26 1/2	26 3/4	27	27 1/4	27 3/4	28 1/4
View B	33 1/2	33 3/4	34	34 1/2	34 3/4	35 1/4

Finished Bust

	XS	S	M	L	XL	XXL
Shirt	47 1/2	49 1/2	51 1/2	53 1/2	56 1/2	59 1/2

58" wide Fabric
All Sizes
2 1/4 yards



Right Front

- Remove $\frac{5}{8}$ " from the circumference of the neckline.
- Shorten $1 \frac{1}{2}$ " at the bottom.

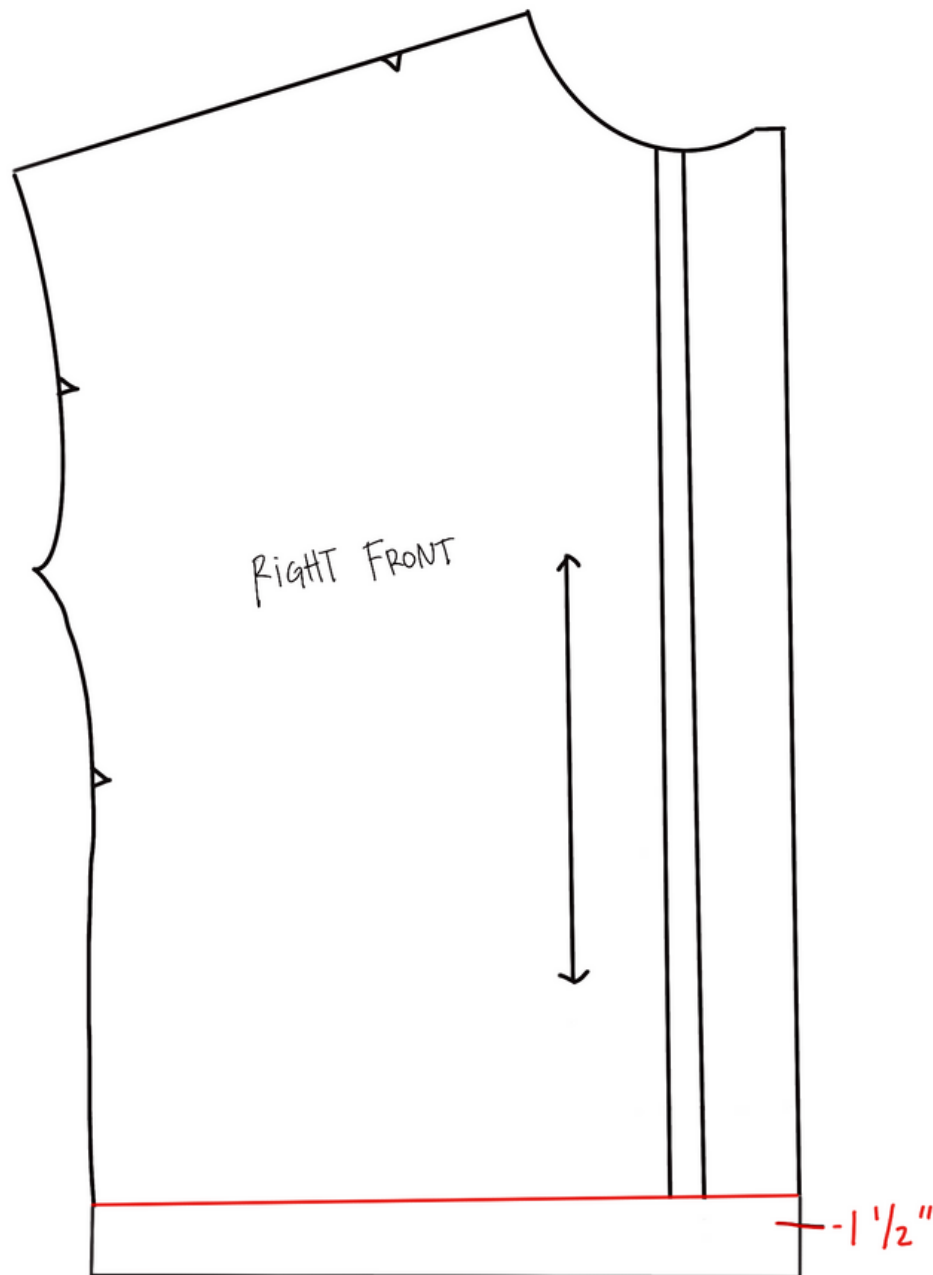
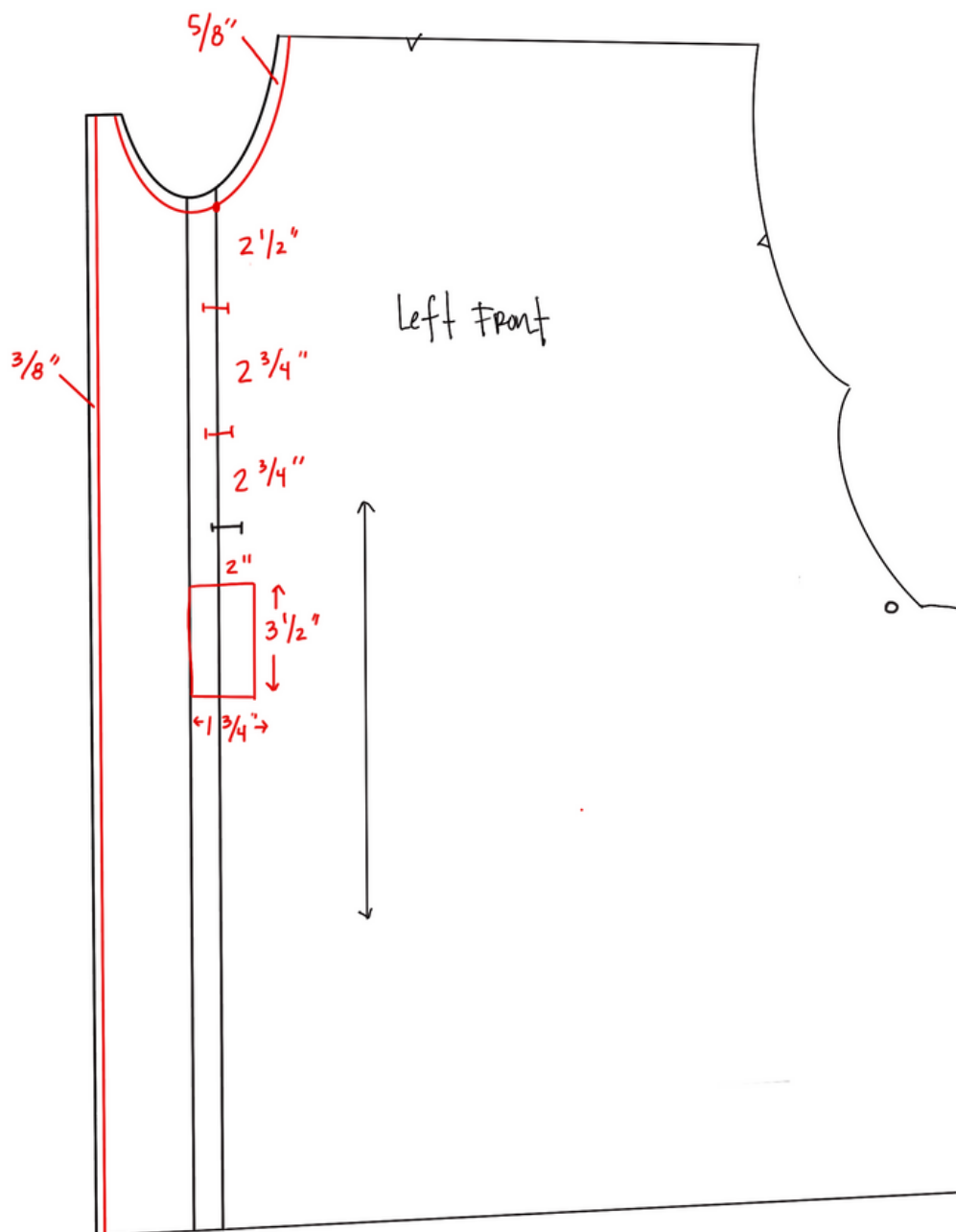


Illustration 1

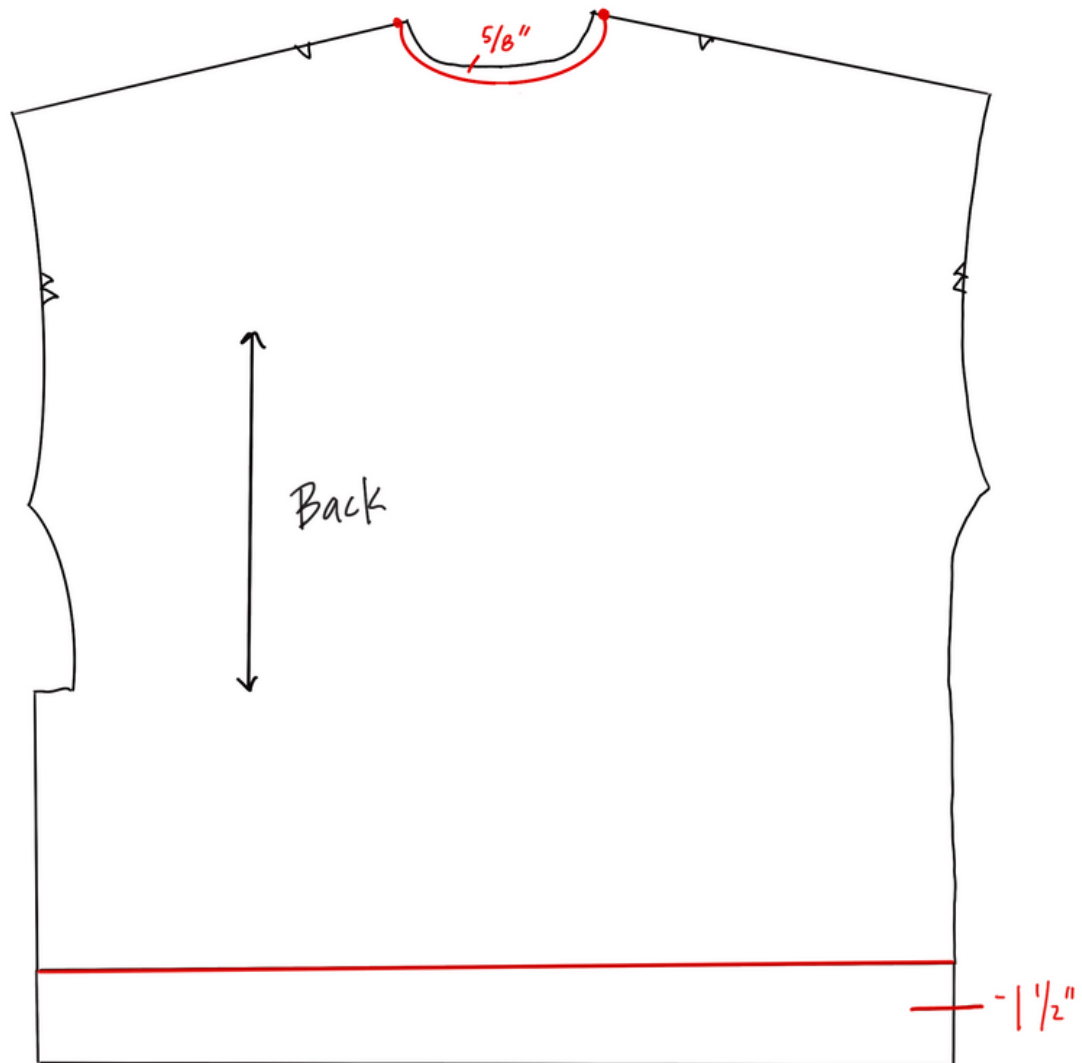
Left Front

- Remove $\frac{5}{8}$ " from the circumference of the neckline.
- Remove $\frac{3}{8}$ " from the edge of the self facing.
- Use the single buttonhole placement as indicated on the pattern. From that, mark two more buttonhole placements above that as indicated on the drawing.
- To mark the topstitching, measure 2" below the original buttonhole and draw a rectangle 1 $\frac{3}{4}$ " wide X 3 $\frac{1}{2}$ " high.



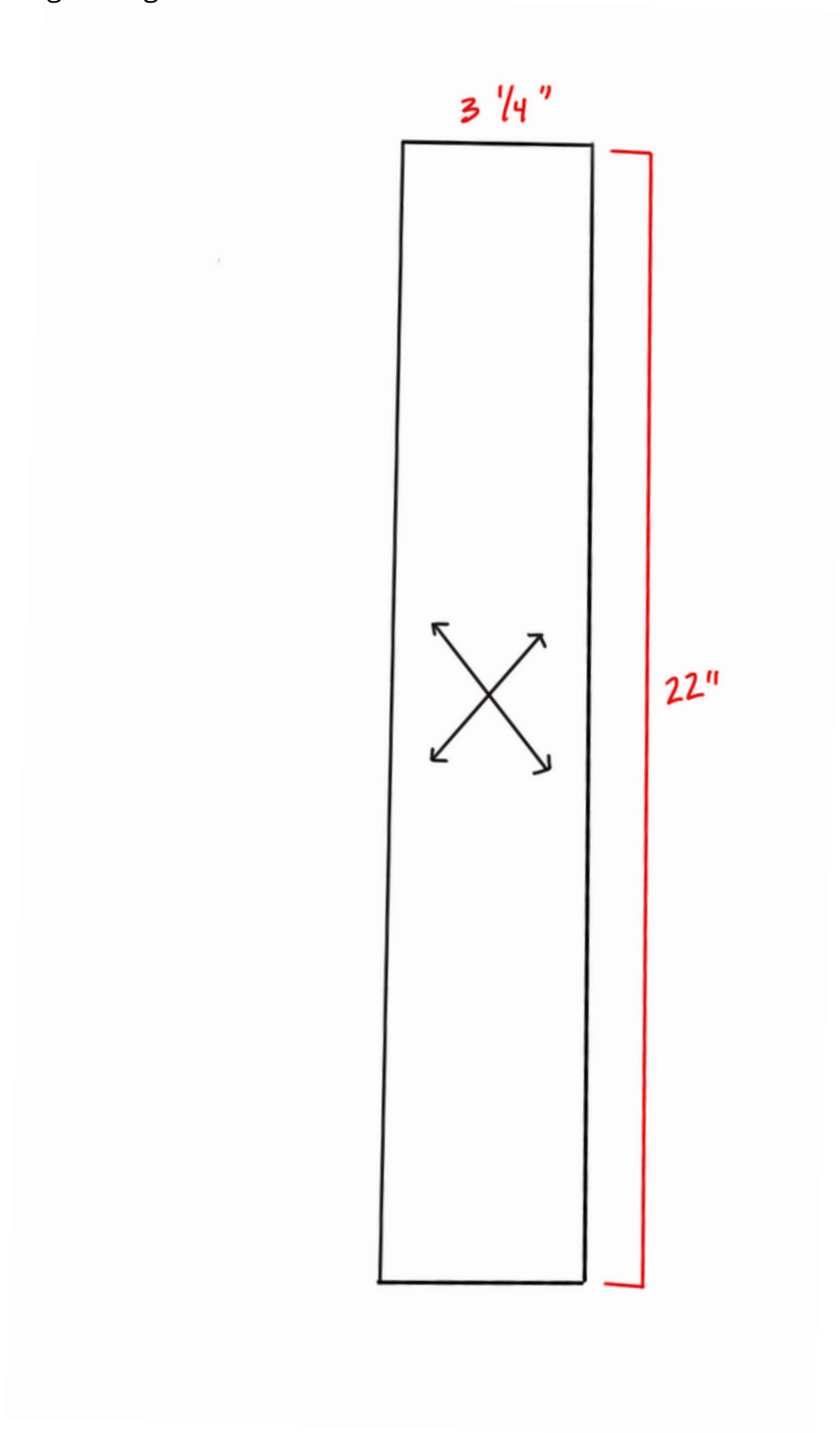
Back

- Remove $\frac{5}{8}$ " from the circumference of the neckline.
- Shorten $1\frac{1}{2}$ " at the bottom.



Collar

- To make a new Collar pattern piece, draw a rectangle that is 3 ¼" wide X 22" long. Mark bias straight-of-grain lines.



Sleeve (Refer to Illustrations 1-4)

- Determine the finished length of your Sleeve (the sample is 5 ½"). Use this measurement plus a seam allowance (5 ½" + ½" = 6 ⅛") to measure down from the center of the sleeve cap. At this point, draw a horizontal line perpendicular to the straight of grain. Draw another line 2" below that and label that the Cuff Foldline. Draw two more lines, one that is 2" below the Cuff Foldline and another line 1" below that. The bottom line is the new cut line for the Sleeve.

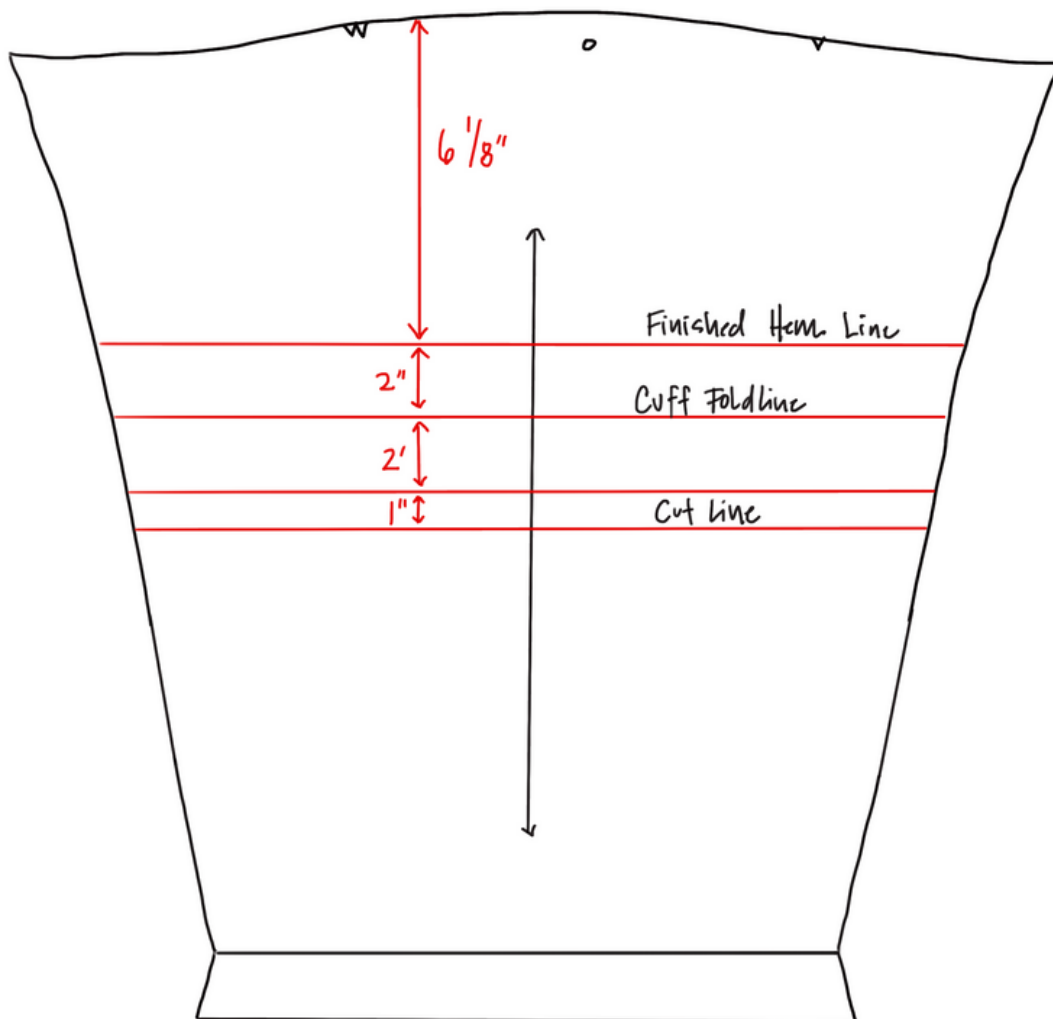


Illustration 1

Add pattern paper to each side of the Sleeve. To create the edge profile cuts for the Cuff, first fold the pattern under along the Cuff Foldline.

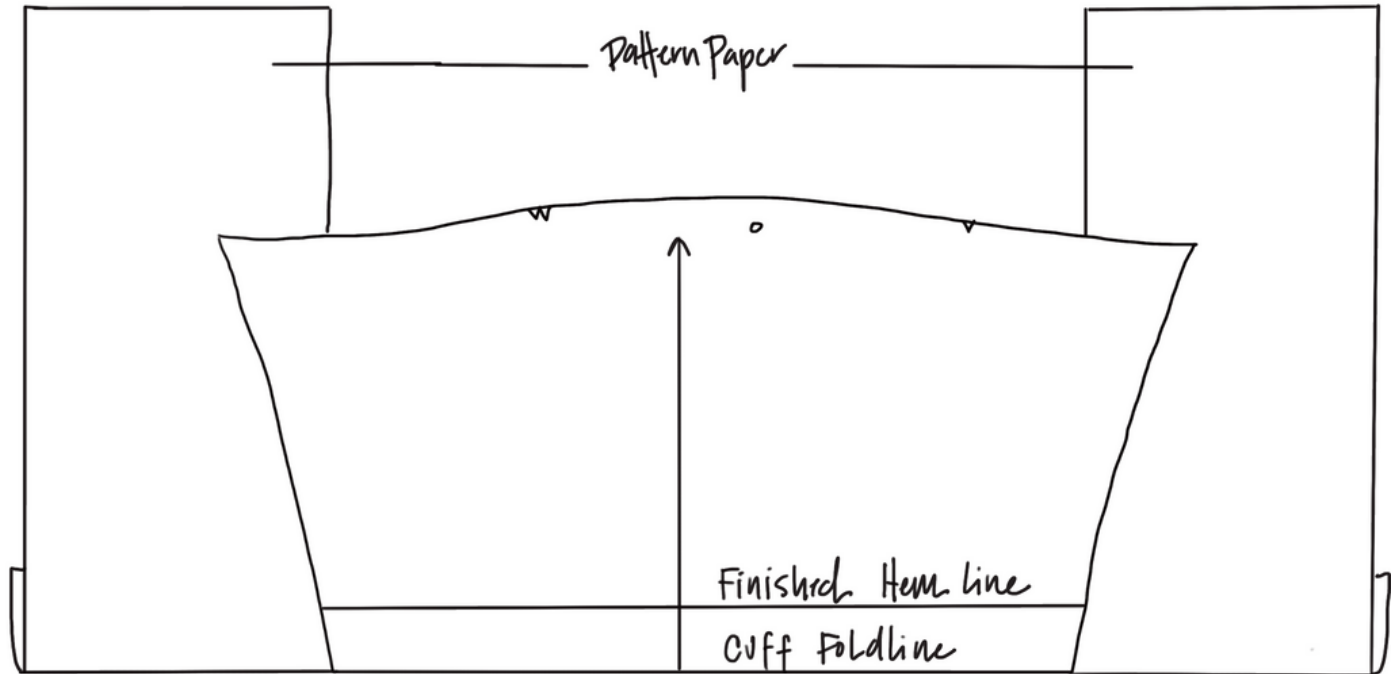


Illustration 2

Next, bring the Cuff Foldline up 2", folding the pattern along the Finished Hem Line. Fold the 1" section under the Cuff. You can see the offset edges of the Sleeve side edges through the pattern paper. Using a hip curve or other curved ruler, draw new Sleeve side cut edges starting at the original end of the Sleeve caps and ending at the bottom of the original width of the Sleeves. Cut along this line through all layers. Cut along this line through all layers.

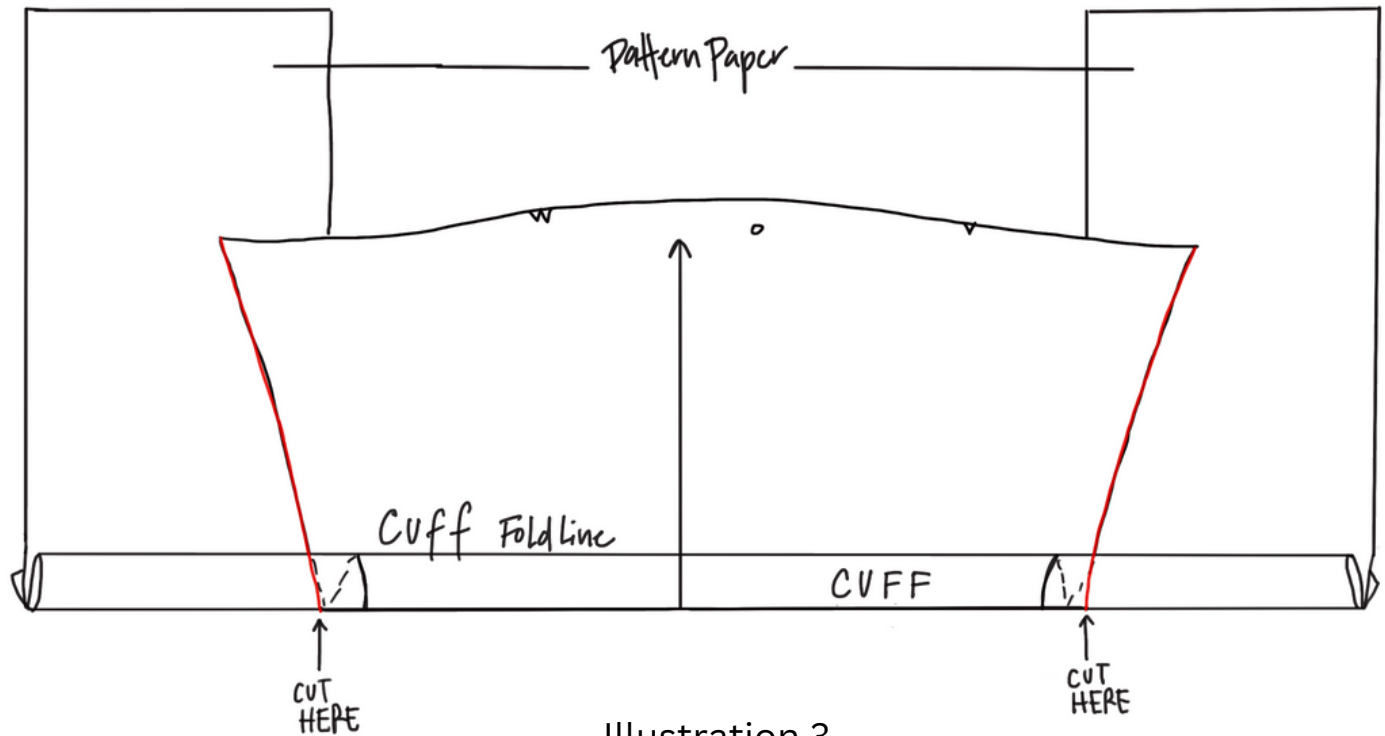


Illustration 3

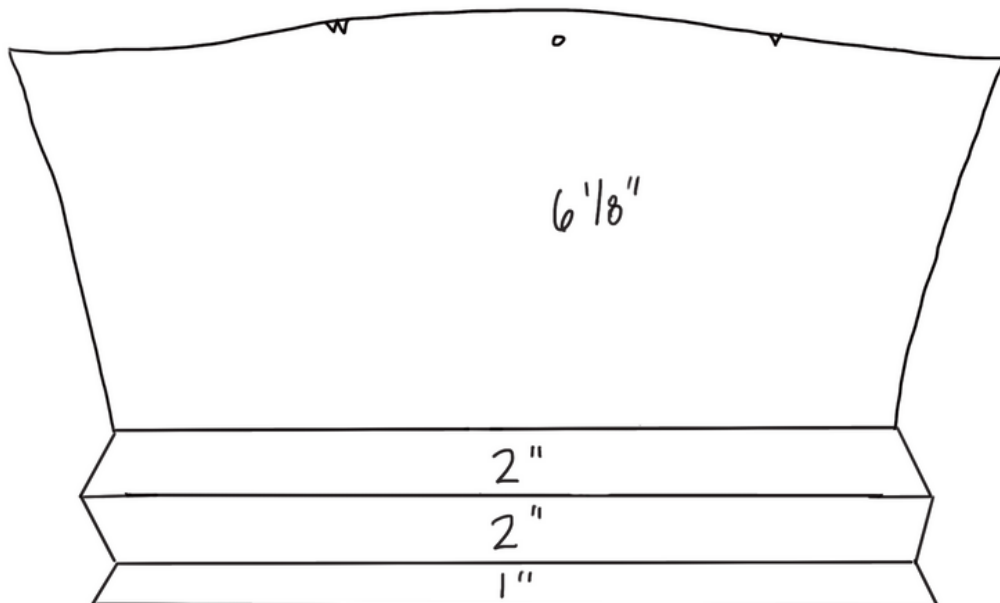


Illustration 4

Fronts

1. Staystitch neck on Fronts
2. Interface self front facings (optional)
3. Use 2¼" and 1⅞" templates to prepare Front Hems
4. Press self facings to wrong side and topstitch
5. Use 1¼" and 1⅞" templates to press bottom and side vent hems on Fronts
6. Sew mitered corner on Left Front

Back

7. Staystitch Back neck
8. Press bottom and side vent hems on Back
9. Sew mitered corners on Back
10. Sew shoulder seams

Collar

11. Install Collar

Sleeves

12. Serge bottom edge of Sleeve
13. Press 3" of bottom of Sleeve to wrong side
14. Sew Sleeves to garment
15. Serge finish vent opening on left Front
16. Sew side and Sleeve seams
17. Stitch 3" turndown to Sleeve
18. Press cuff in place
19. Bartack cuff

Hems

20. Topstitch bottom and side vent hems

Buttons and Buttonholes

21. Sew buttonholes (add 4th button on Collar if desired)
22. Topstitch Left Front over Right Front at center front
23. Sew buttons

Video Access

The Online Workshop will be posted to your course page on August 4th.

Q&A Access

There will be two Zoom Q&A sessions this month on August 17th at 12:00pm CDT and August 24th at 4:00pm CDT. Check your course page for the meeting link. If you can't join us, the Zoom recording will be uploaded to your course page.

*Thank you for joining us for a year of Pattern RePlay.
Happy sewing,*

Linda & The Sewing Workshop Team

QUESTIONS?

alex@sewingworkshop.com 

(785) 357.6231 

301 S. Kansas Ave. Suite A
Topeka, KS 66604 

sewingworkshop.com 



#swrivierapullover
#sewingworkshop
#sewingworkshoppatterns
#SC23