

MATERIALS LIST

- Whistles Shirt [digital](#) pattern or Whistles Shirt [printed](#) pattern - View B (or use View A for longer length)
- [Striped Whistles Kit](#) (optional purchase)
 - Or use similar cotton fabrics:
 - Fabric #1 - 3 ½ yards cotton uneven stripe (4 ¼ yards for size XXL)
 - Fabric #2 - ½ yard cotton print
 - 3 yards 2mm Rattail or Cotton Cording
- 5 - ⅝" Buttons
- ¼ yard Interfacing
- 1 Spool 100% Cotton Thread
- 3 Spools Coordinating Isacord or other overlock thread
- [Silk Thread](#) in contrasting color
- Pattern Paper or Tissue Paper
- [Chakoner](#)
- [Point Presser](#)
- [Point Turner](#)
- Stiletto
- [75/11mm Universal Machine Needles](#)
- [Hand Sewing Needle](#)
- [Needle Threader](#)
- [Cutting Shears](#)
- Trimming Scissors or [Snips](#)
- [Rotary Cutter](#) and Cutting Mat
- [Glasshead Silk Pins](#)
- [Seam Ripper](#)
- [C-thru 18" Grid Ruler](#)
- [Fusi-Web](#)
- [Buttonhole Cutter Set](#)
- Edgestitch Foot
- 3-Groove Pintuck Foot
- Manilla File Folder or Tagboard
- [Sleeve Board](#)
- [Tailors' Ham & Holder](#)
- [Seam Gauge](#)
- Steam Iron

You will need a sewing machine that has been cleaned and oiled and is in good condition. If your machine also embroiders and has a 9mm throat plate, you may want to invest in a 5mm-wide throat plate. If you have the even feed feature on your machine, engage it. If not, add a walking foot, if possible. We recommend a serger for seam finishes.

Purchase the Pattern

Purchase the printed [Bells & Whistles pattern](#) or download the Whistles Shirt [digital](#) pattern. We recommend printing at home or contact our office to print your copy center pattern.

Course Page Documents to Download:

- Striped Whistles Layouts with Stripe Fabric Sizes XS-XL Layout Letter Size
- Striped Whistles Layouts with Stripe Fabric Size XXL Layout Letter Size
- Printable Striped Whistles Layouts with Stripe Fabric_XS-XXL (Both Sizes)

Fabric Preparation

Pre-wash a small sample to compare and make your choice. We recommend washing and drying as you normally would.

Pattern Pieces Needed

- Left Front
- Left Back
- Sleeve
- Collar

Pattern Tracing

Trace your size so you don't cut off a section you need.

Fitting

This shirt is designed to extend off the shoulder by approximately 1 ½"

Measure your full bust. The Whistles Shirt measurement chart is included here. Measure the pattern on that size and compare the two measurements. Allow at least 6" to 8" of ease in the bust. Start with a size that has this amount of ease and adjust as needed. Consider using the [Fashion Fitting Encyclopedia](#) for reference.

References to Consider:

[Fitting the Bust Download Tutorial](#)

[Fitting Shoulders Download Tutorial](#)

WHISTLES SHIRT FINISHED GARMENT MEASUREMENTS

SIZE	XS	S	M	L	XL	XXL	
BUST View A & B	44	46	48	50	53	56	INCHES
LENGTH VIEW A (Center Back)	30½	30¾	31	31¼	31¾	32¼	INCHES
LENGTH VIEW B (Center Back)	26½	26¾	27	27¼	27¾	28¼	INCHES

Left Front

Use Left Front Illustrations 1-4 for reference.

1. Use the Left Front pattern piece for both right and left Front pieces.

Side Panel

1. Delete the side vent extension and continue your side seam cut line to the bottom. *Left Front 1.*
2. Using the chart on the next page, measure over from the side seam cut line the amount indicated for your size. Draw a straight line from the bottom hem to the armscye (this will be at approximately the single notch on the armscye). This is the seamline. Add a $\frac{5}{8}$ " seam allowance to this seamline. *Left Front 1.*
3. Trace the Side Panel section and add a $\frac{5}{8}$ " seam allowance beyond the new seamline. *Left Front 1&2.*
4. Measure down approximately. Measure down 9" along the side seam and mark a match point.
5. Draw a 45° diagonal line to indicate the straight of grain on the bias.

Mitered Corner

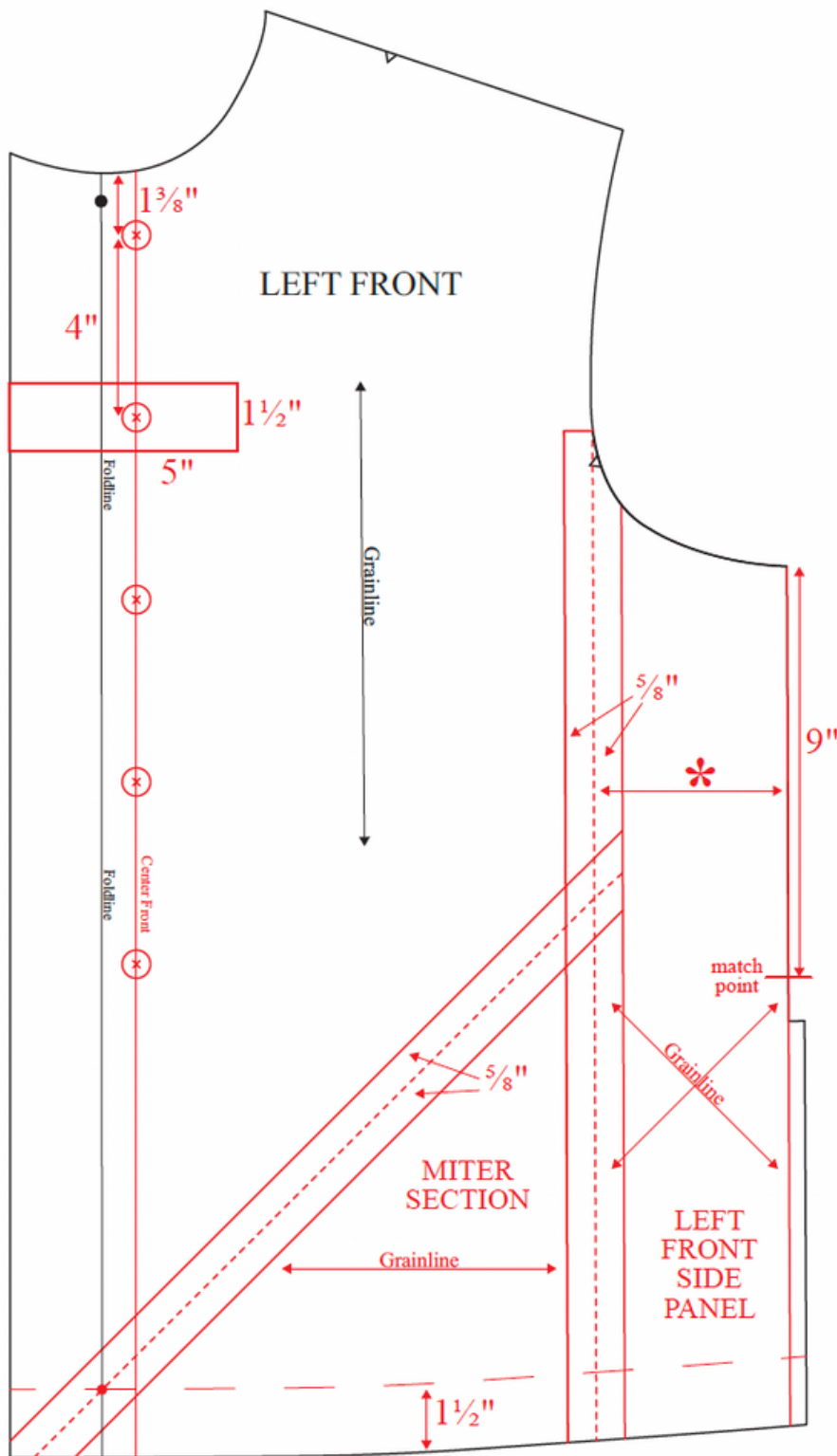
1. To create the miter section on each Front, measure up 1 $\frac{1}{2}$ " from the bottom cut line along the center foldline and mark a point. From this point, draw a 45° diagonal line extending to the new side panel seam. This the miter seamline. Trace a new upper front and add a seam allowance to the diagonal seamline. Trace the bottom triangular section along the seamline and add a $\frac{5}{8}$ " seamline. *Left Front 3.*
2. Find the center of the diagonal line and mark a match point from the seamline to the edge. Mark a point in the same position on the diagonal line of the upper Front.
3. Note the hem edge of the mitered sections. *Left Front 3.*

Button Placement

1. The center front is the center of the buttonhole/button placement and is $\frac{3}{4}$ " from the center foldline. *Left Front 4.*
2. On the Left Front only and using the cut line of your size at the neck, measure down 1 $\frac{3}{8}$ " along the center front line. This is the center of the first button. Measure 4" from this point for the second button, and continue measuring 4" between each button. There are a total of 5 buttons. A buttonhole starts about $\frac{1}{4}$ " above the center of a button. *Left Front 1 & 4.*

Button Patch Placement

1. At $\frac{3}{4}$ " above the center of the second button from the top, draw a horizontal line. Continue making a square that is 5" wide X 1 $\frac{1}{2}$ " high. This is the Button Patch placement. *Left Front 4.*

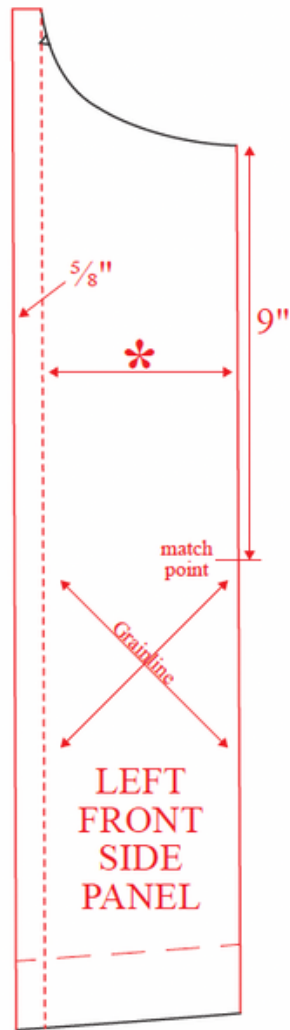


SIDE PANELS*

XS — $2\frac{5}{8}"$
 S — $3"$
 M — $3\frac{1}{4}"$
 L — $3\frac{1}{2}"$
 XL — $4"$
 XXL — $4\frac{1}{4}"$

REPEAT FOR
RIGHT FRONT

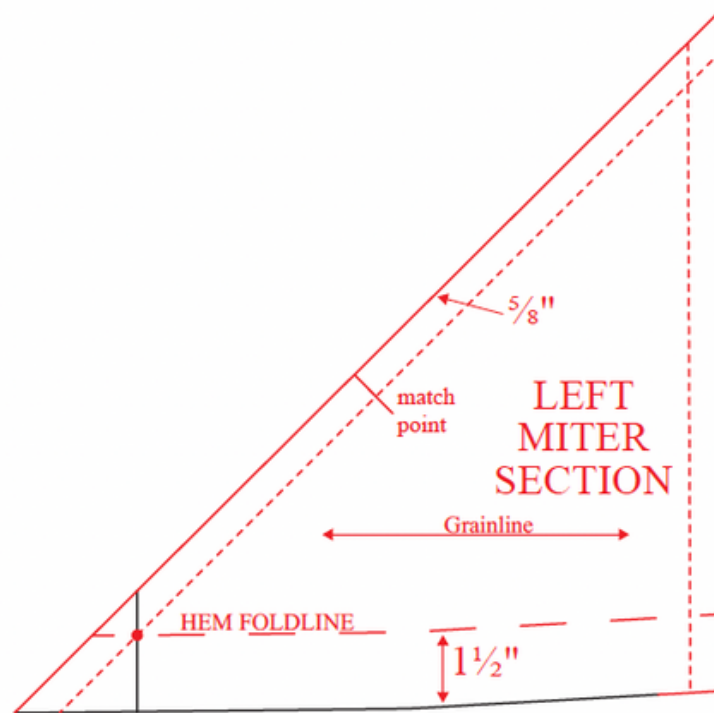
LEFT FRONT 1



REPEAT FOR
RIGHT FRONT
SIDE PANEL

LEFT FRONT 2

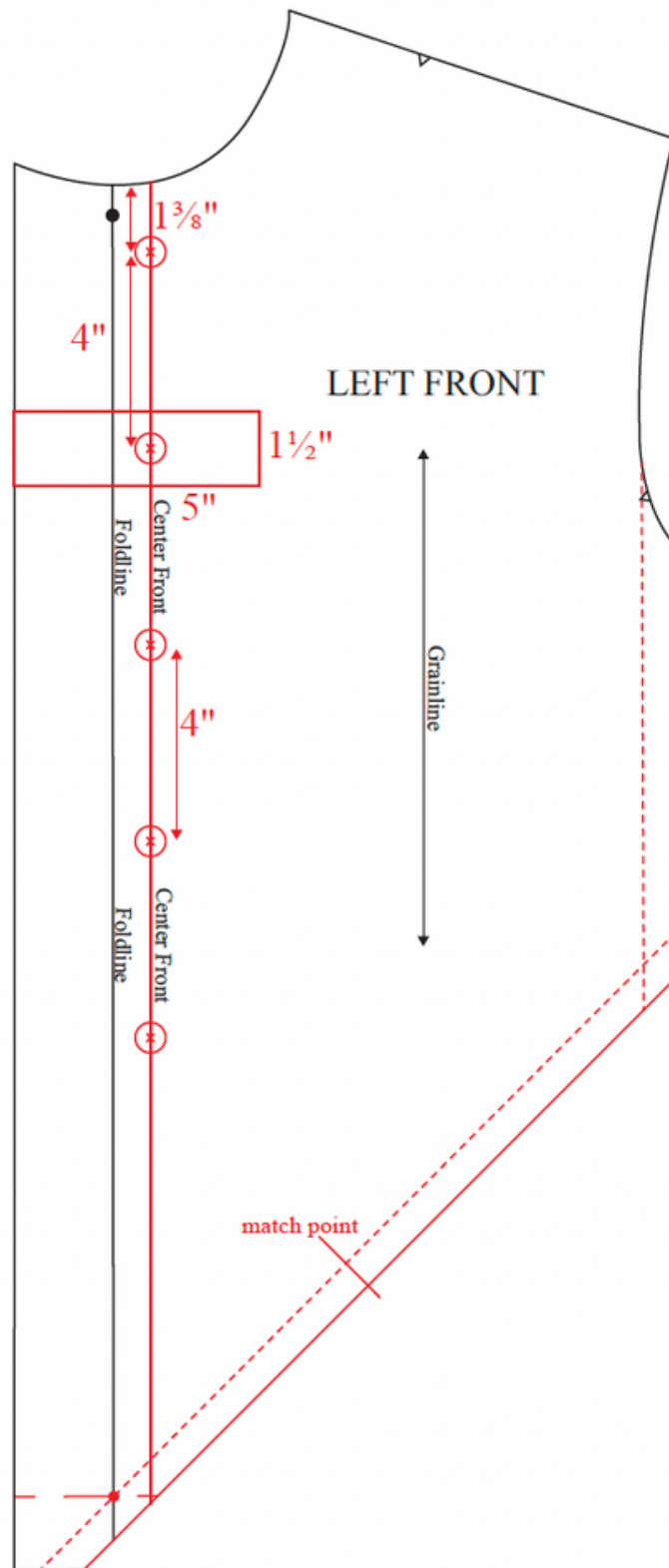
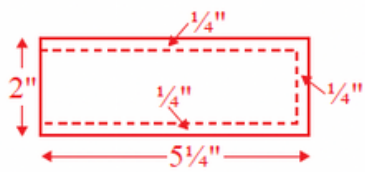
YOKE



REPEAT FOR
RIGHT MITER
SECTION

LEFT FRONT 3

BUTTON PATCH



LEFT FRONT 4

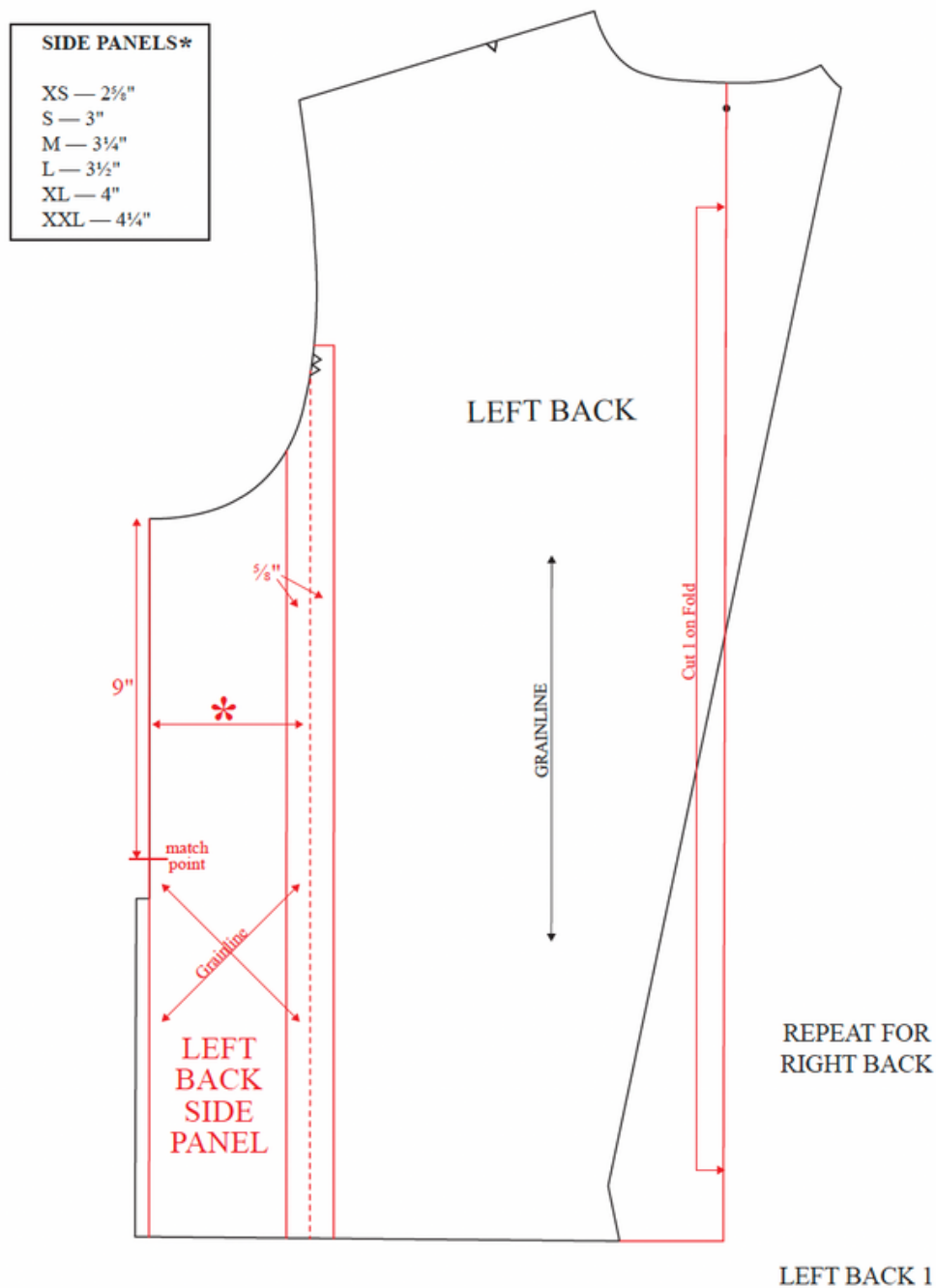
LEFT BACK

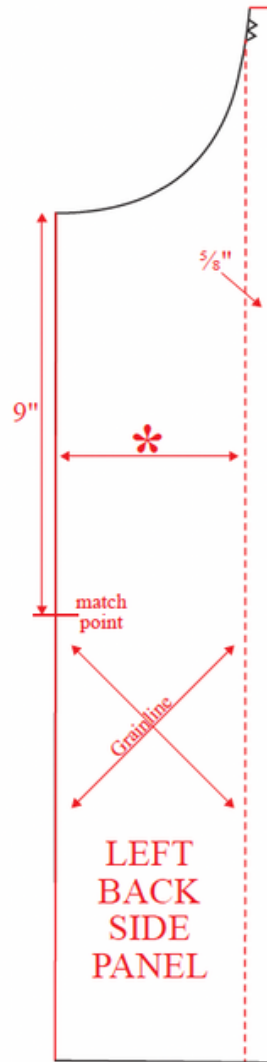
Use Left Back Illustrations 1-3 for reference.

1. Add pattern paper to the center back. Extend the center back line to the bottom and indicate this as a foldline.

Side Panel

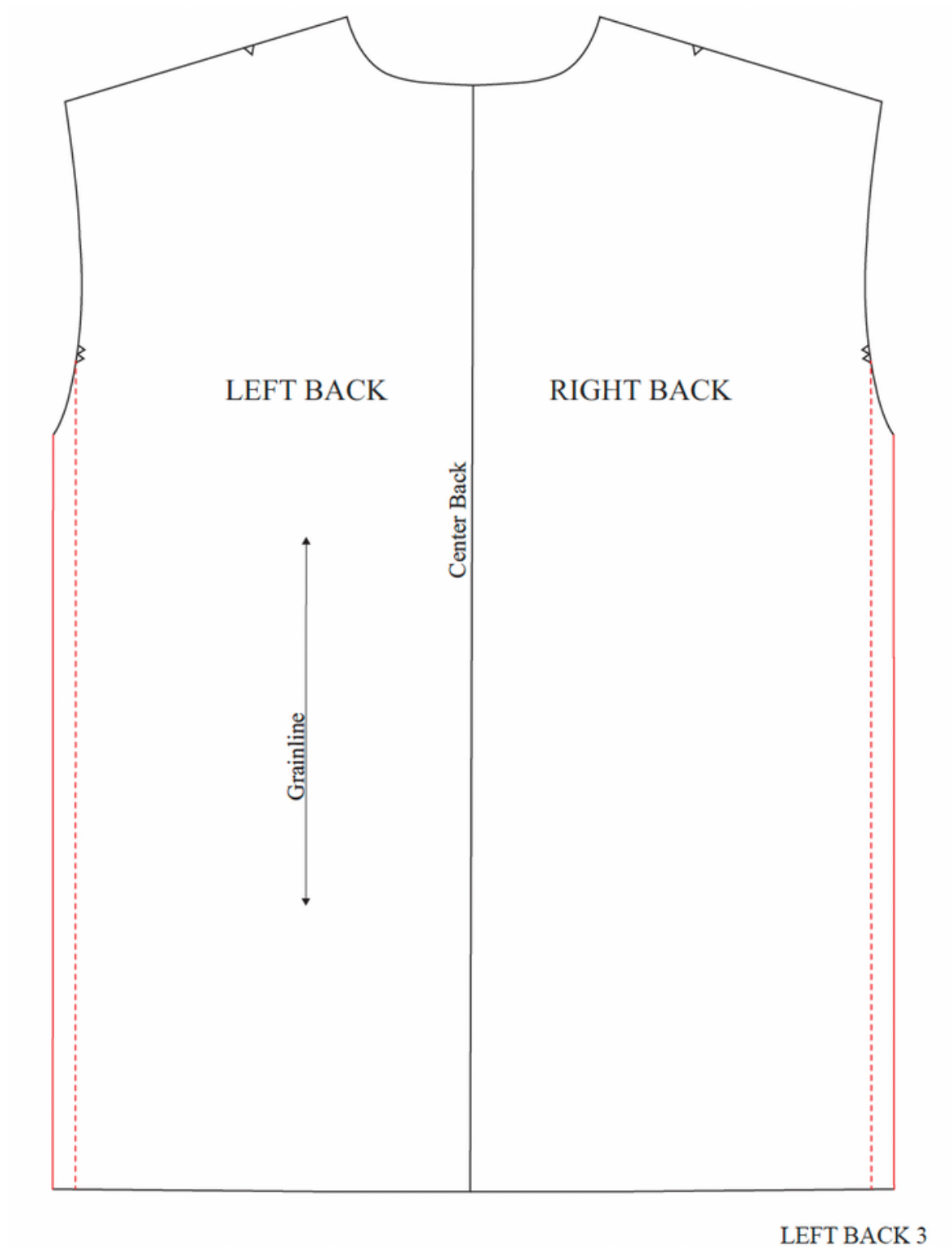
1. Delete the side vent extension and continue your side seam cut line to the bottom.
2. Using the chart below, measure over from the side seam cut line the amount indicated for your size. Draw a straight line from the bottom hem to the armhole (this will be at approximately the double notches on the armhole). This is the seamline.
3. Trace the Side Panel section and add a $\frac{5}{8}$ " seam allowance.
4. Trace the Back piece and add a $\frac{5}{8}$ " seam allowance to the Side Panel seamline.
5. Measure down approximately. Measure down 9" along the side seam and mark a match point.
6. Draw a 45° diagonal line to indicate the straight of grain on the bias.





REPEAT FOR
RIGHT BACK
SIDE PANEL

LEFT BACK 2



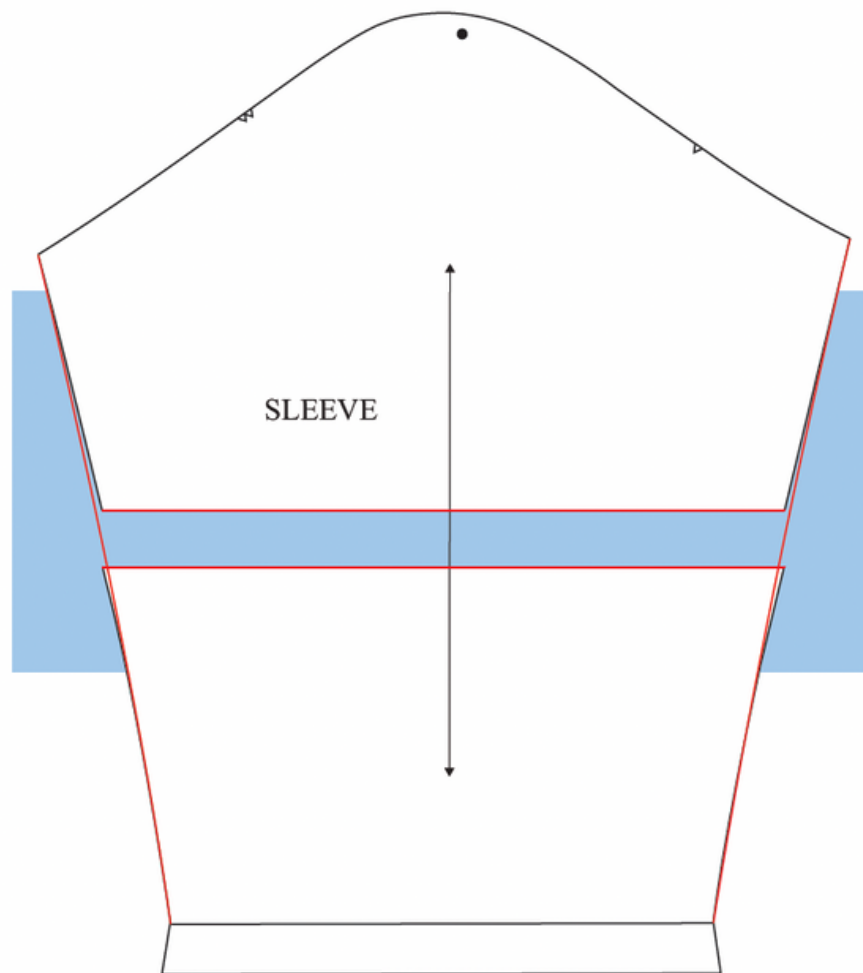
Sleeves

Use Sleeve Illustrations 1-5 for reference.

1. To lengthen or shorten the Sleeve, find the center of the sleeve and draw a horizontal line perpendicular to the straight of grain. (This is indicated on the digital version of the pattern.) To lengthen, add pattern paper. To shorten, fold along this line. True the cut lines by drawing a new line connecting the underarm point to the hem foldline. *Sleeve 1 & 2.*
2. Delete the hem allowance and add a $\frac{5}{8}$ " seam allowance below the hem foldline on your size. *Sleeve 3.*

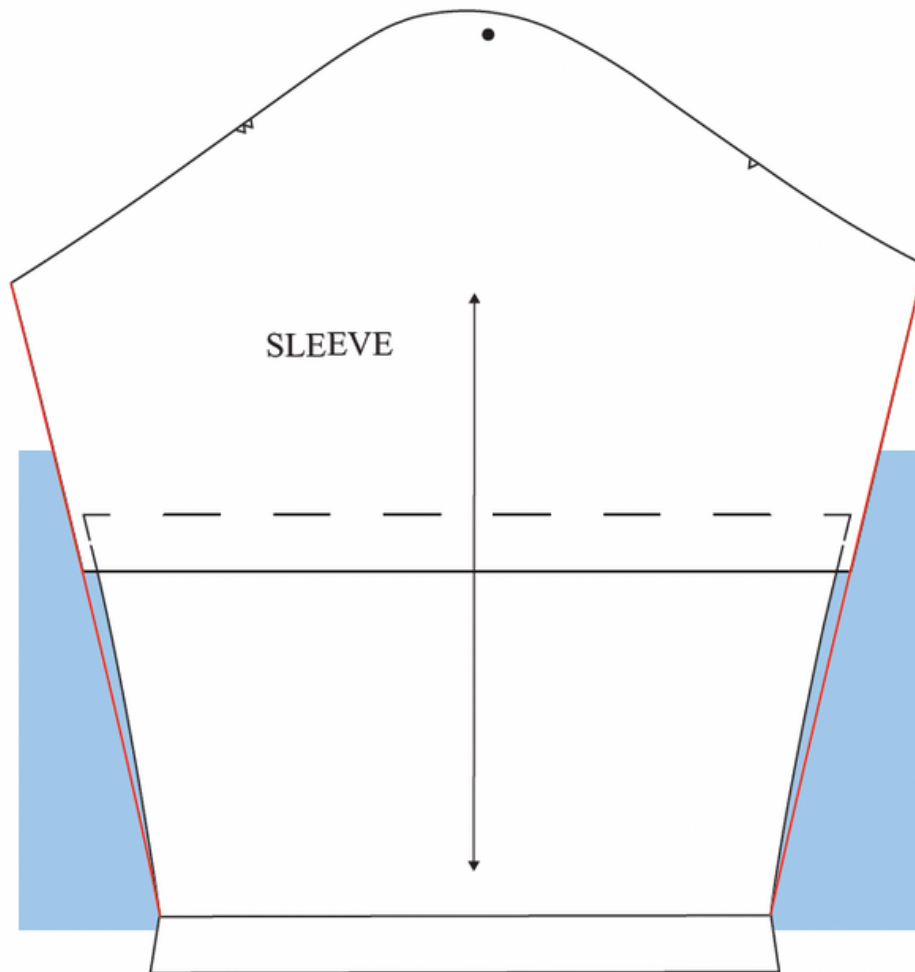
SLEEVE FACING

1. To make a Sleeve Facing pattern piece, place pattern paper on top of the Sleeve pattern. Trace the hem fold line and new Sleeve cut line. Measure up $3\frac{1}{2}$ " from the hem fold line and add a $\frac{5}{8}$ " seam allowance. Trace the side profile cut lines of the sleeve seam. *Sleeve 4&5.*



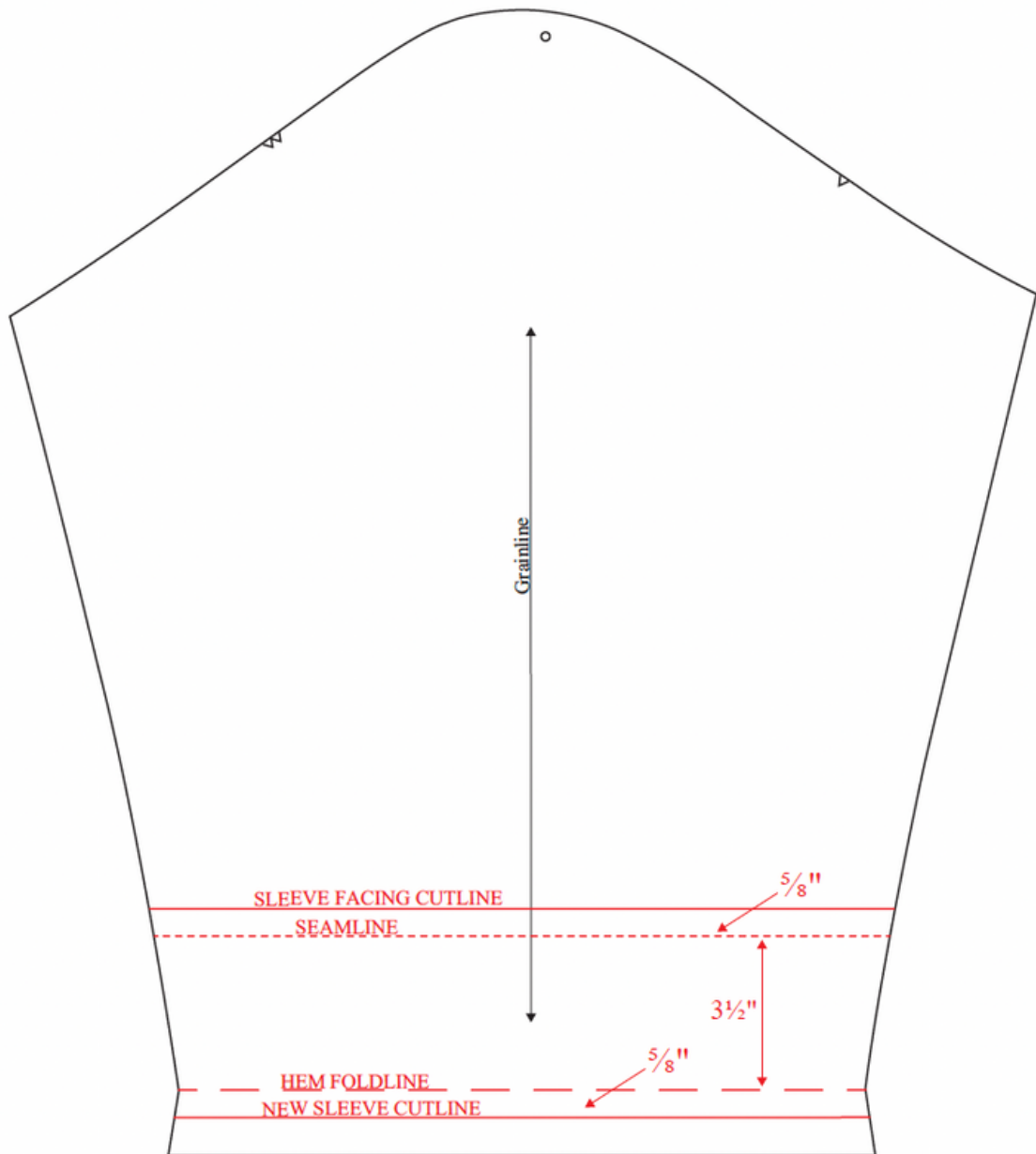
LENGTHEN SLEEVE

SLEEVE 1

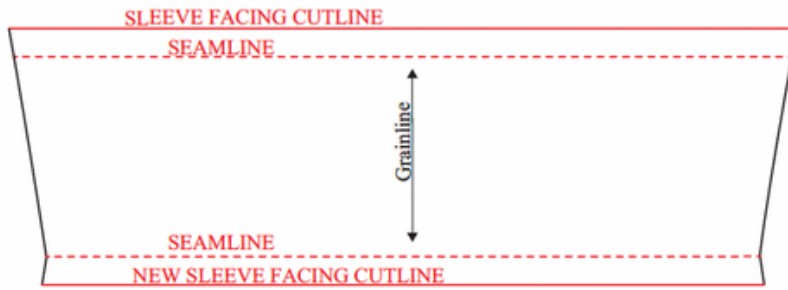


SHORTEN SLEEVE

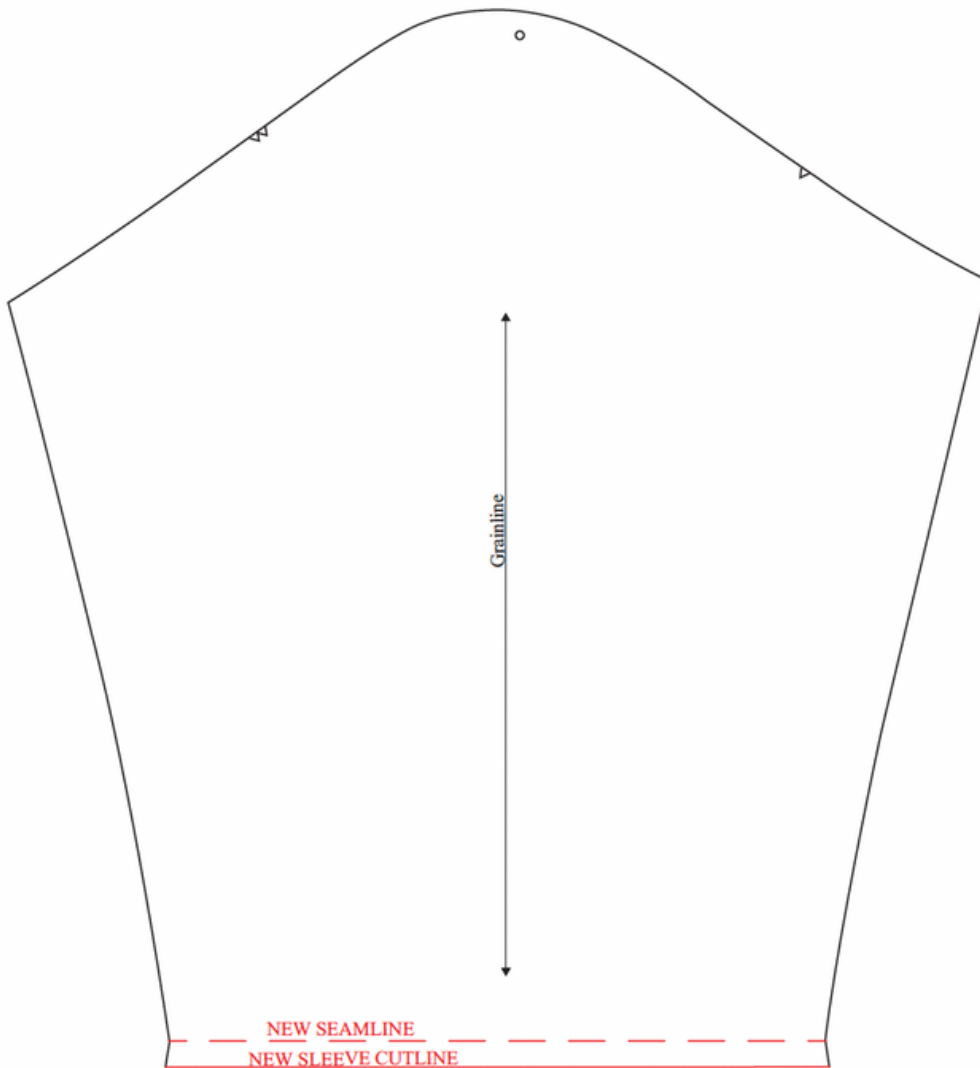
SLEEVE 2



SLEEVE 3



SLEEVE 4



SLEEVE 5

Collar

Use the Collar pattern piece as is.

Button Patch

Make a pattern piece that is 5 ¼" X 2" with a straight of grain marking parallel with the 2".

Bias Strips for Piping

Cut 4 strips of fabric on the bias 1 ½" wide X at least 24" long. Piece as needed.

Pressing Templates

Cut 3 pressing templates out of tagboard or a manilla file folder.

- 1 - 2" X 11 ½" Draw a line ⅝" along one long edge.
- 1 - 1 ½" X 11 ½"
- 1 - 1 ⅛" X 11 ½"

1. Make a pattern for every piece you will cut out:

- 1 Right Front
- 1 Left Front
- 1 Full width Back
- 1 Right Miter section
- 1 Left Miter section
- 1 Button Patch
- 2 Front Side Panels
- 2 Back Side Panels
- 2 Collars
- 1 Right Sleeve
- 1 Left Sleeve
- 2 Sleeve Facings

2. Cut out single layer with the right side of the fabric facing up.

Fabric #1 - Stripe

- Cut 2 Fronts (use Left Front to cut a right and a left front)
- Cut 1 Back
- Cut 2 Sleeves
- Cut 1 Uppercollar
- Cut 2 Miter Sections
- Cut 2 Front Bias Side Panels
- Cut 2 Back Bias Side Panels

Fabric #2 - Floral print

- Cut 1 Under Collar
- Cut 2 Sleeve Facings
- Cut 1 Button Patch
- Cut 4 - 1 ½"-wide X 24" strips on the bias

Interfacing - ¼ yard

- Cut 1 Collar for Under Collar

Notes for Cutting Out Uneven Stripes

Review the cutting layouts located in your course page.

Place the fabric single layer and right side up on a cutting surface.

Start with the Back pattern piece, placing the center back on the center of an orange stripe for the Sunburst colorway or the center of a Pink stripe for the Wine colorway.

Clip the notches on the Back shoulder seams.

Then place the Fronts on the fabric, making sure the notches on the Fronts are placed on the same stripe as the notches on the Back. Follow the attached layout guide to place the Fronts noting that the Left Front is flipped. This ensures that the stripes will be balanced on the front of the garment with the stripes placed in the correct order on both Fronts. This also means that the dark stripes will match on both shoulders but the color sequence will only match on the Left Front shoulder and will be out of color order on the Right Front shoulder.

Continue laying out the Sleeves noting that one Sleeve is flipped so the color sequence will be the same on both sleeves.

Next, use the match points on the diagonal line of each Front to place the match points on the Miter Sections on the same stripe. By changing the direction of the stripes (the straight of grain line), the stripes will form an “L” shape and need to be in the same color sequence.

Lay out the side panels in pairs (a front side panel and a back side panel constitutes a pair). Place the match points of a Front Side Panel and a Back Side Panel on the same stripe checking to make sure that the color sequence is in the same direction and the miters form a rooftop-shape point. The two pieces for each side need to match in sequence but the right and left sides do not need to be in the same color sequence.

Be sure and note the right side of the fabric on each piece after they are cut out.

MARKING

Clip into the seam allowances to note the notches and use tailor’s tacks to identify dots. Mark your fabric as you are cutting out and before you move the pieces from the cutting table.

Construction Basics

- Stitch $\frac{5}{8}$ " seam
- 3-thread serge finish the raw edges together and press in one direction
- Snip into the seam allowances at the single and double notches
- Clip into the seam allowances to note the notches and use tailor's tacks to identify dots

Order of Construction

1. Attach Miter sections to Front.
2. Prepare and sew Button Patch to Left Front.
3. Make 4 strips of Piping.
4. Attach Piping to both Fronts and Back at sides.
5. Sew Side Panels together at side seams.
6. Attach Side Panels to Fronts and Back.
7. Sew bottom hem.
8. Sew center front hems.
9. Sew shoulder seams.
10. Staystitch neckline and install Collar.
11. Sew Facings to Sleeves.
12. Sew Sleeve seams.
13. Topstitch Facings to Sleeves.
14. Insert Sleeves in garment.
15. Sew Buttonholes to Right Front and Buttons to Left Front.

Video Access

The online workshop will release on your course page on April 7th.

Q&A Access

There will be a single Zoom Q&A session this month on April 27th, at 12:00pm CT. Check your course page for the meeting link. If you can't join us, the Zoom recording will be uploaded to your course page.

*Thank you for joining us for a year of Pattern RePlay.
Happy sewing,*

Linda & The Sewing Workshop Team

QUESTIONS?

alex@sewingworkshop.com 

(785) 357.6231 

301 S. Kansas Ave. Suite A
Topeka, KS 66604 

sewingworkshop.com 



#swstripedwhistles
#sewingworkshop
#SC23