

MATERIALS LIST

- Whistles Shirt [digital](#) pattern or Whistles Shirt [printed](#) pattern - View A (or use View B for shorter length)
- [Whistles Pullover Kit](#) (optional purchase)
 - Or use similar shirting fabrics:
 - 1 yard Main Fabric #1 (sizes XS-L) or 2 yards Main Stripe Fabric Stripe (sizes XL-XXL)
 - ½ yard Contrasting Fabric #2
 - 1 yard Stripe #3
 - Half of ¾ yard Fabric #4
- 3 Buttons
- 1 Spool 100% Cotton Thread
- Optional ¼ yard Fusible Interfacing (optional)
- 3 Spools Coordinating Isacord or other overlock thread
- [Silk Thread](#) in contrasting color
- Tracing Paper & Tracing Wheel
- Pattern Paper or Tissue Paper
- Clover Bias Tape Maker
- Frixion Pen or [Chaukoner](#)
- [Point Presser](#)
- [Point Turner](#)
- Stiletto
- [Thermal Finger Mitts](#)
- [65/9mm Universal Machine Needles](#)
- [Hand Sewing Needle](#)
- [Needle Threader](#)
- [Cutting Shears](#)
- Trimming Scissors or [Snips](#)
- [Rotary Cutter](#) and Cutting Mat
- [Glasshead Silk Pins](#)
- [Seam Ripper](#)
- [Chalk Pencil](#)
- [C-thru 18" Grid Ruler](#)
- [Fusi-Web](#)
- [Buttonhole Cutter Set](#)
- Edgestitch Foot
- Clear Presser Foot (or Toe ⅜" wide)
- Manilla File Folder or Tagboard
- [Sleeve Board](#)
- [Tailors' Ham](#)
- [Seam Gauge](#)
- Steam Iron

You will need a sewing machine that has been cleaned and oiled and is in good condition. If your machine also embroiders and has a 9mm throat plate, you may want to invest in a 5mm-wide throat plate. If you have the even feed feature on your machine, engage it. If not, add a walking foot, if possible. We recommend a serger for seam finishes.

Purchase the Pattern

Purchase the printed [Bells & Whistles pattern](#) or download the Whistles Shirt [digital](#) pattern. We recommend printing at home or contact our office to print your copy center pattern.

Course Page Documents to Download:

- Whistles Kit Fabric Layout
- Whistles Shirt Shirttail Hem Template

Fabric Preparation

Pre-wash a small sample to compare and make your choice. We recommend washing and drying as you normally would.

Pattern Pieces Needed

- Left Front
- Left Back
- Sleeve
- Collar

Pattern Tracing

Trace your size so you don't cut off a section you need. This is important for the Front and Yoke alterations.

Fitting

Measure your full bust. The Whistles Shirt measurement chart is included here. Measure the pattern on that size and compare the two measurements. Allow at least 6" to 8" of ease in the bust. Start with a size that has this amount of ease and adjust as needed. Consider using the [Fashion Fitting Encyclopedia](#) for reference.

References to Consider:

[Fitting the Bust Download Tutorial](#)

[Fitting Shoulders Download Tutorial](#)

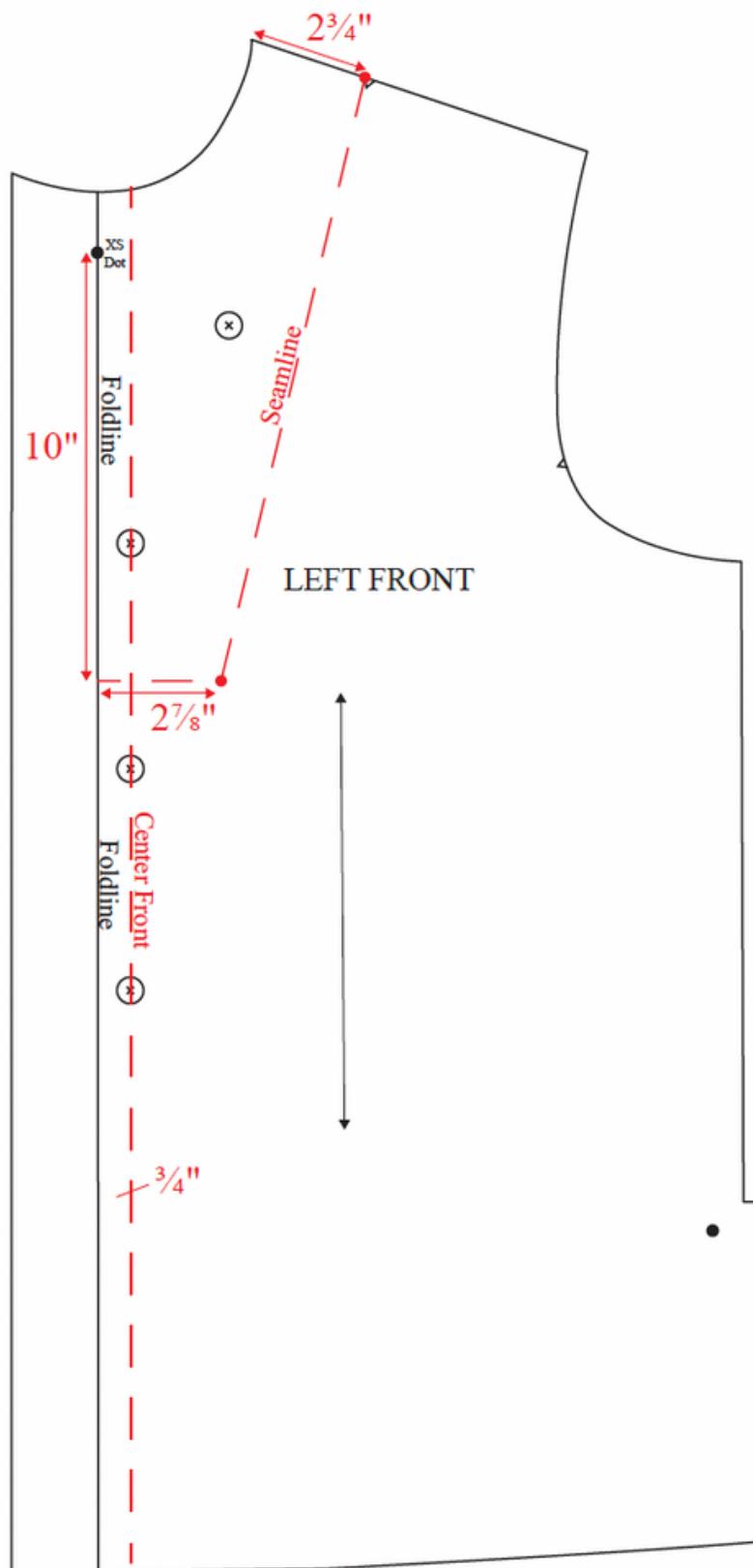
WHISTLES SHIRT FINISHED GARMENT MEASUREMENTS

SIZE	XS	S	M	L	XL	XXL	
BUST View A & B	44	46	48	50	53	56	INCHES
LENGTH VIEW A (Center Back)	30½	30¾	31	31¼	31¾	32¼	INCHES
LENGTH VIEW B (Center Back)	26½	26¾	27	27¼	27¾	28¼	INCHES

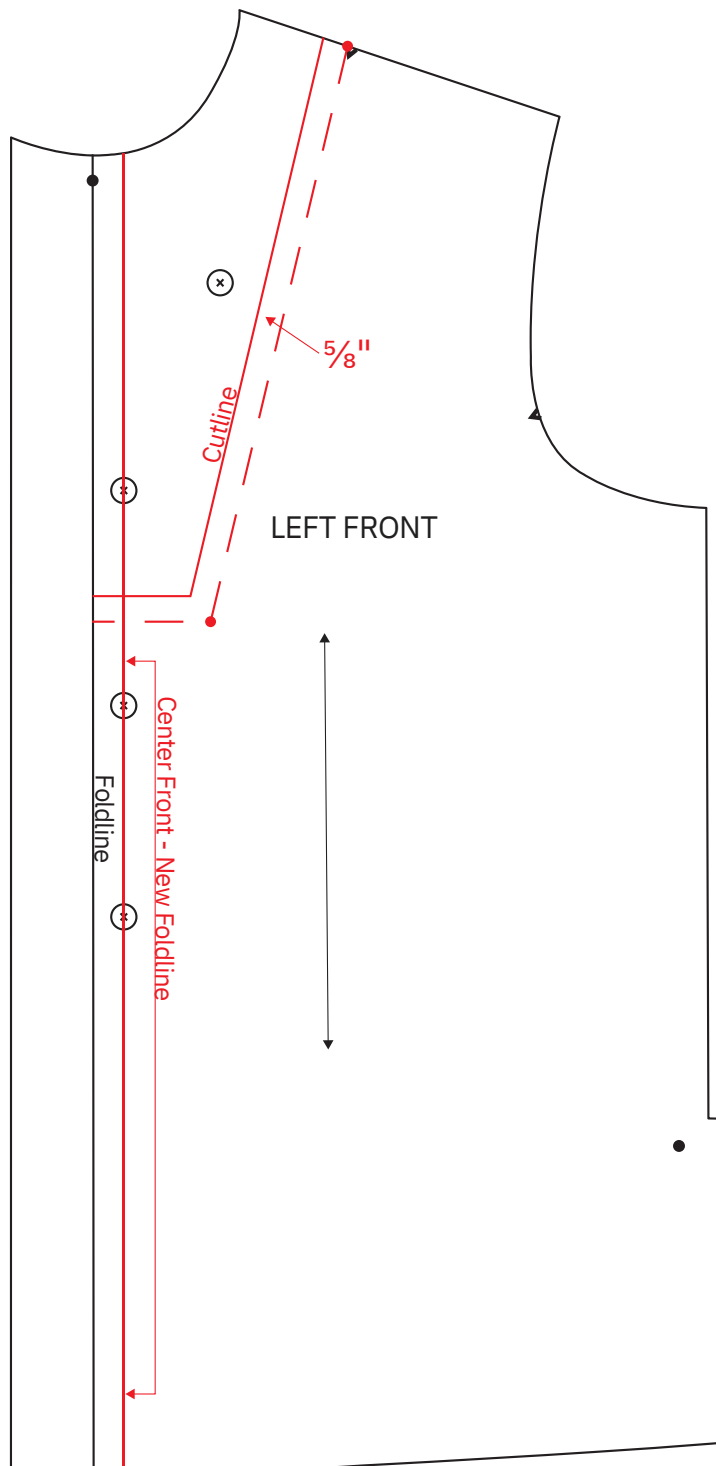
Left Front & Yoke

Refer to the FRONT 1 - 4 Illustrations on the pages that follow.

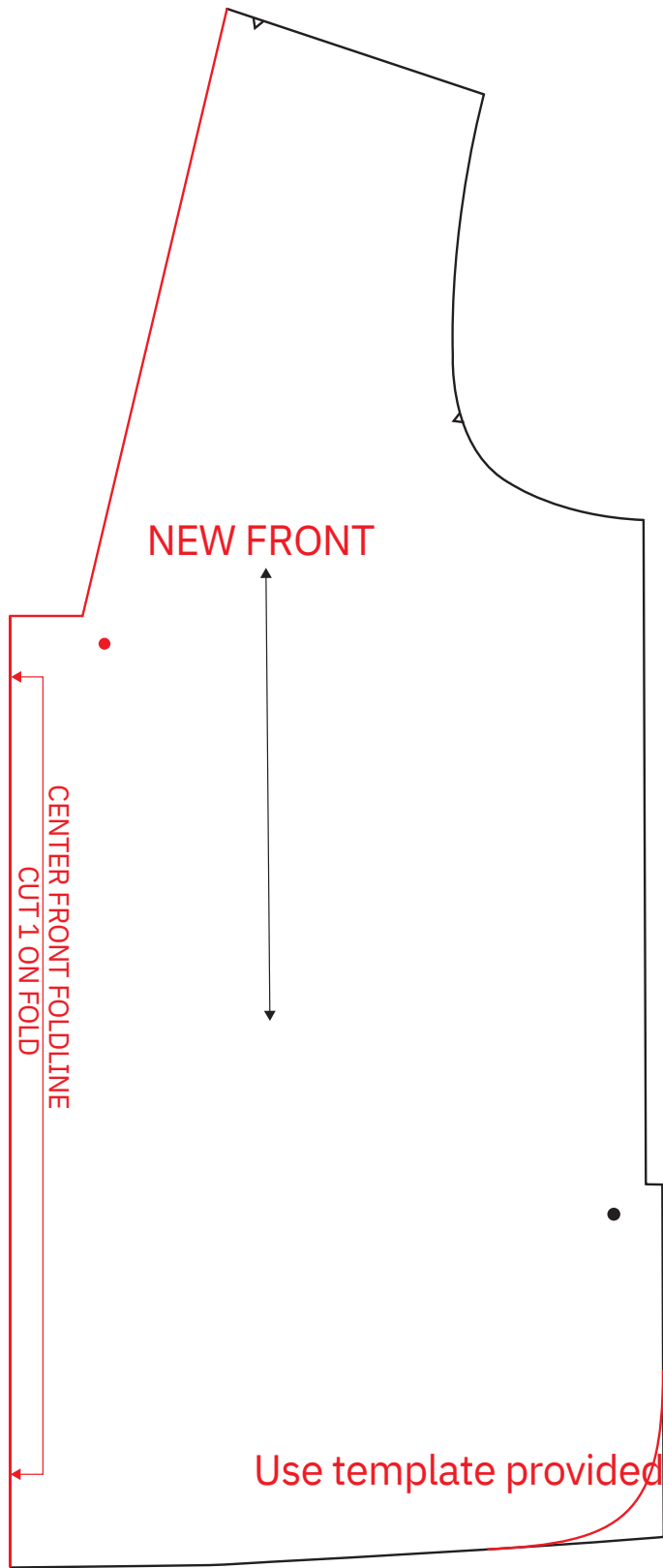
1. To determine the center front, draw a line through the center of the button/buttonhole placements ($\frac{3}{4}$ " from foldline). The center front becomes a new foldline for the body of the garment (not the Yoke). *Front 1*
2. To make a Yoke pattern piece, mark a point 10" down from the XS dot on the original foldline and $2\frac{7}{8}$ " across from original foldline. Mark a point $2\frac{3}{4}$ " from neck point on the shoulder cutline. Draw a diagonal line connecting these two points. This is the seamline for the Front and Yoke pattern pieces. Add a $\frac{5}{8}$ " seam allowance to this seamline to create a Front piece. *Front 2*
3. To make a Yoke pattern piece, trace the seamline on the Front pattern piece and add a $\frac{5}{8}$ " seam allowance. *Front 4*
4. Place 3 buttonholes on the center front line of the Yoke (where the current button placements are located) starting $2\frac{1}{2}$ " from the bottom seamline and spacing them $3\frac{1}{2}$ " apart. *Front 4*
5. Mark a straight of grain line parallel to the center front.
6. Use the shirttail hem template to draw a curve at the side seam. *Front 3*
7. Cut 1 Front on the fold.
8. Cut 2 Yokes pieces.



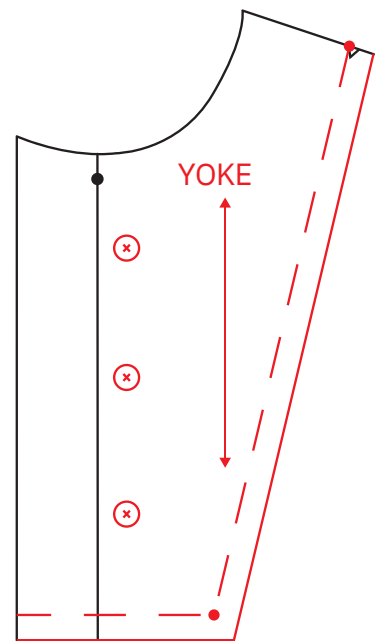
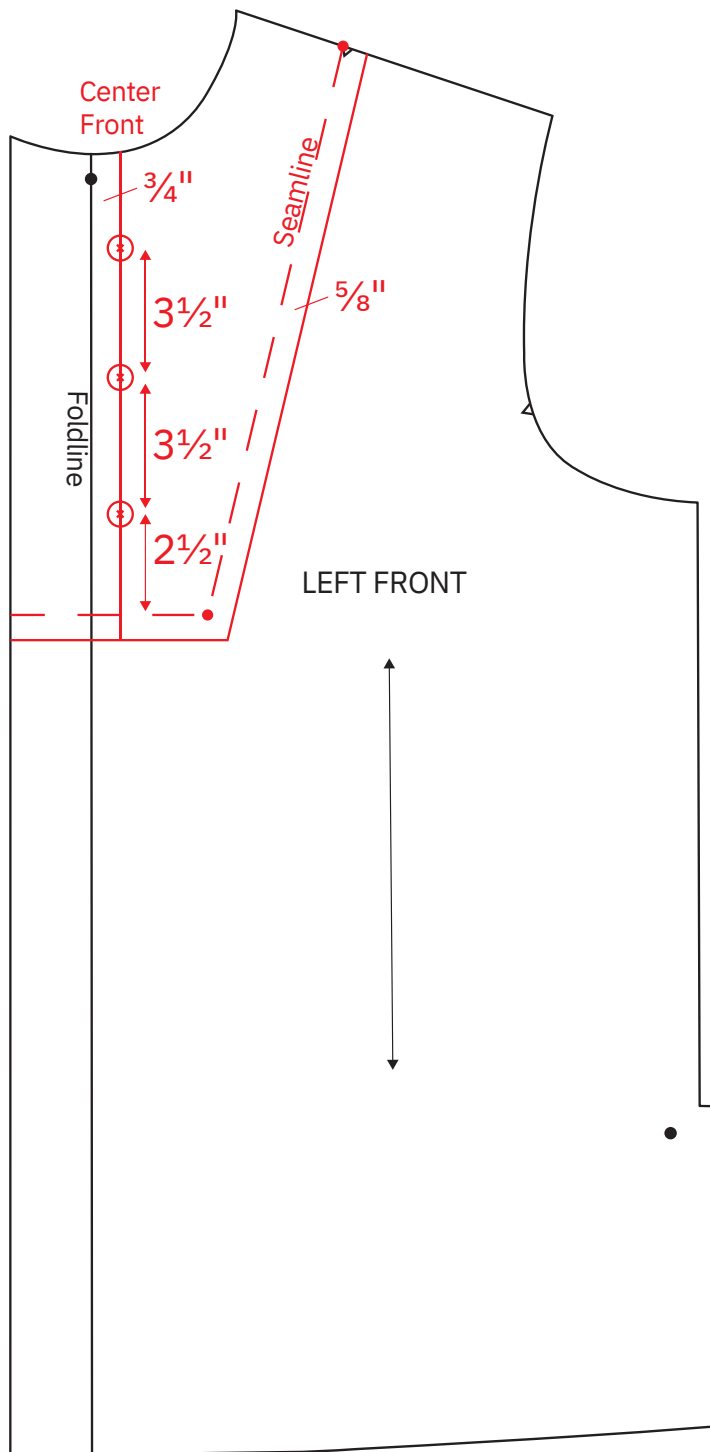
FRONT 1



FRONT 2



FRONT 3

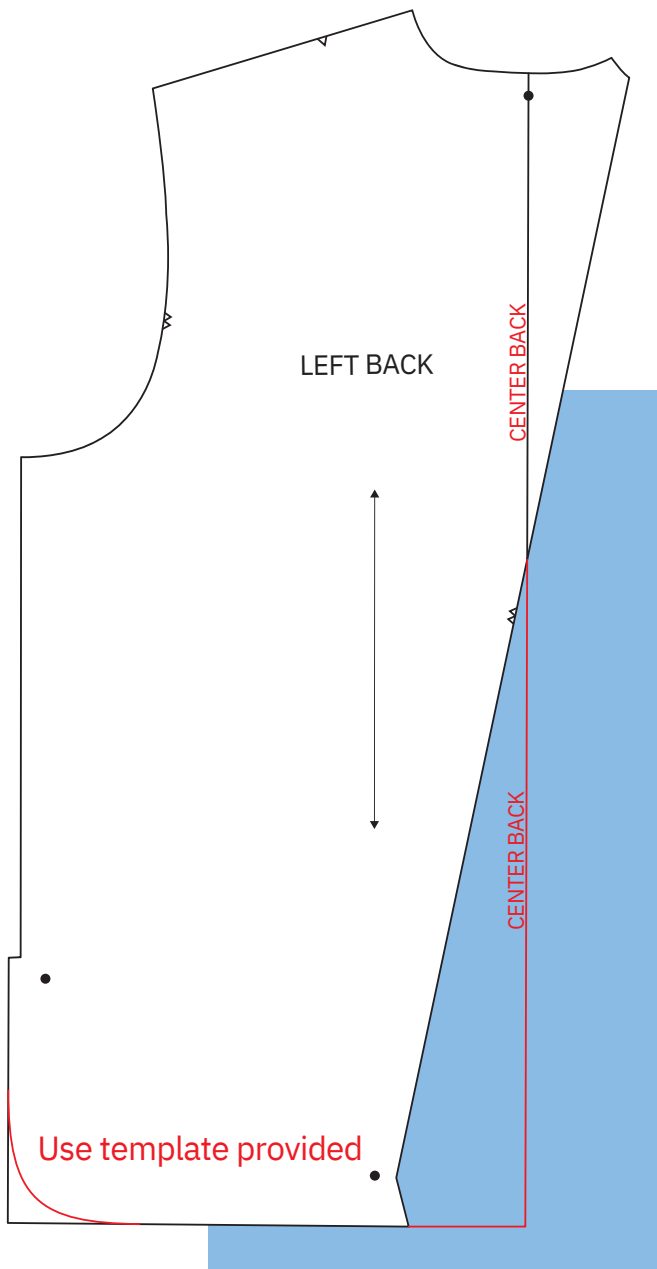


FRONT 4

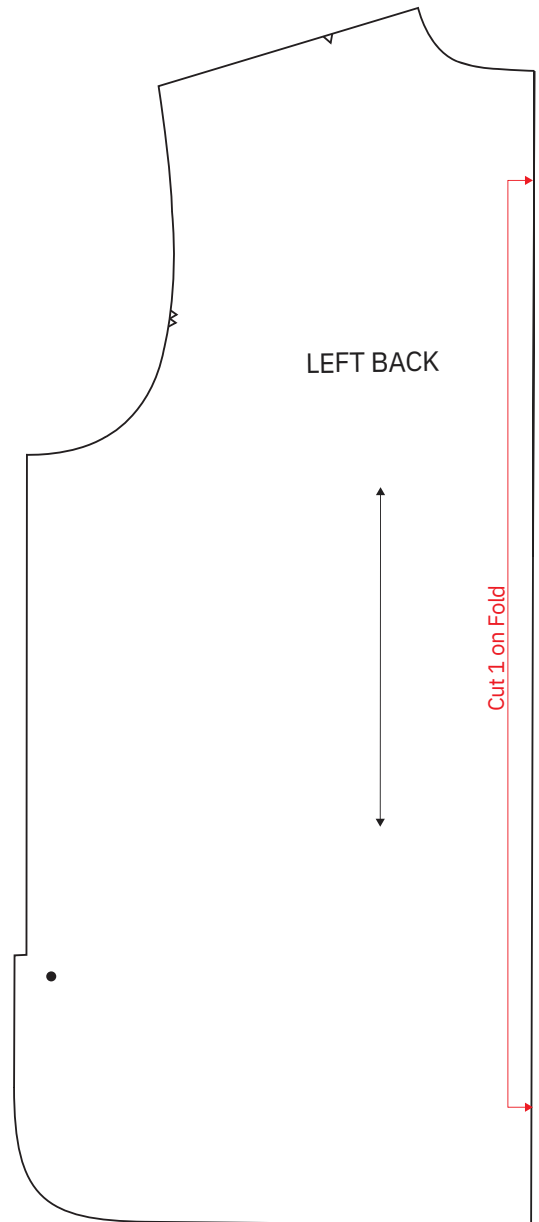
Back

Refer to the BACK 1 -2 Illustrations.

1. Add pattern paper to the center back. Extend the center back line to the bottom and indicate this as a foldline.
2. Use the template to trace a shirttail hem curve at the bottom of the side seam.



BACK 1

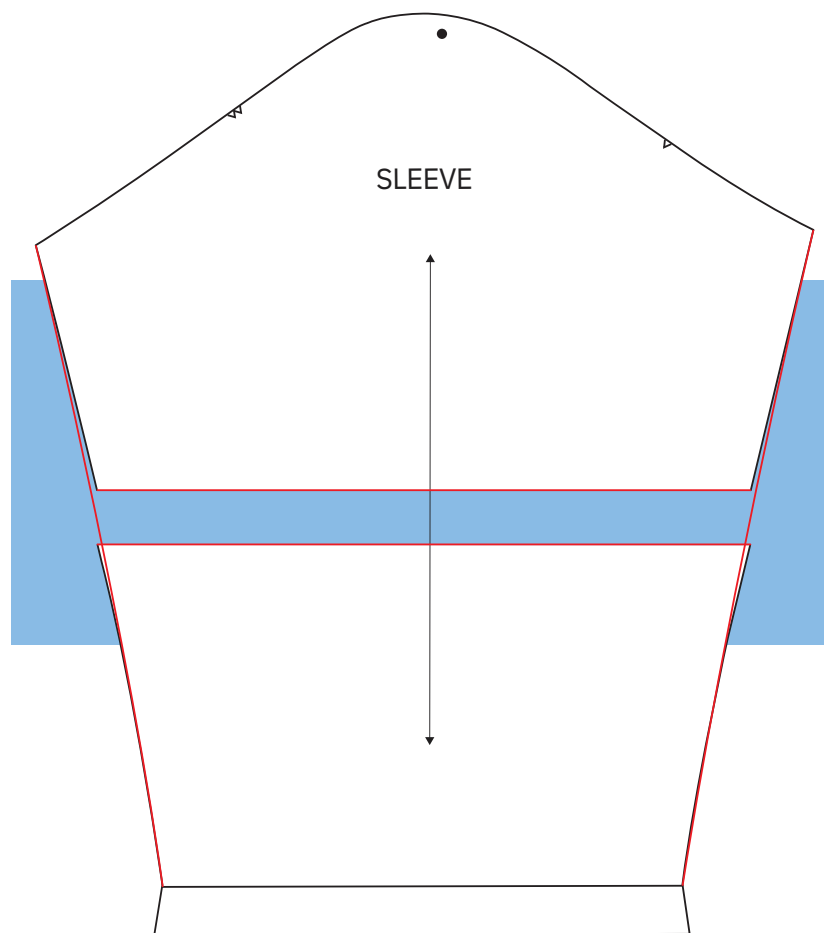


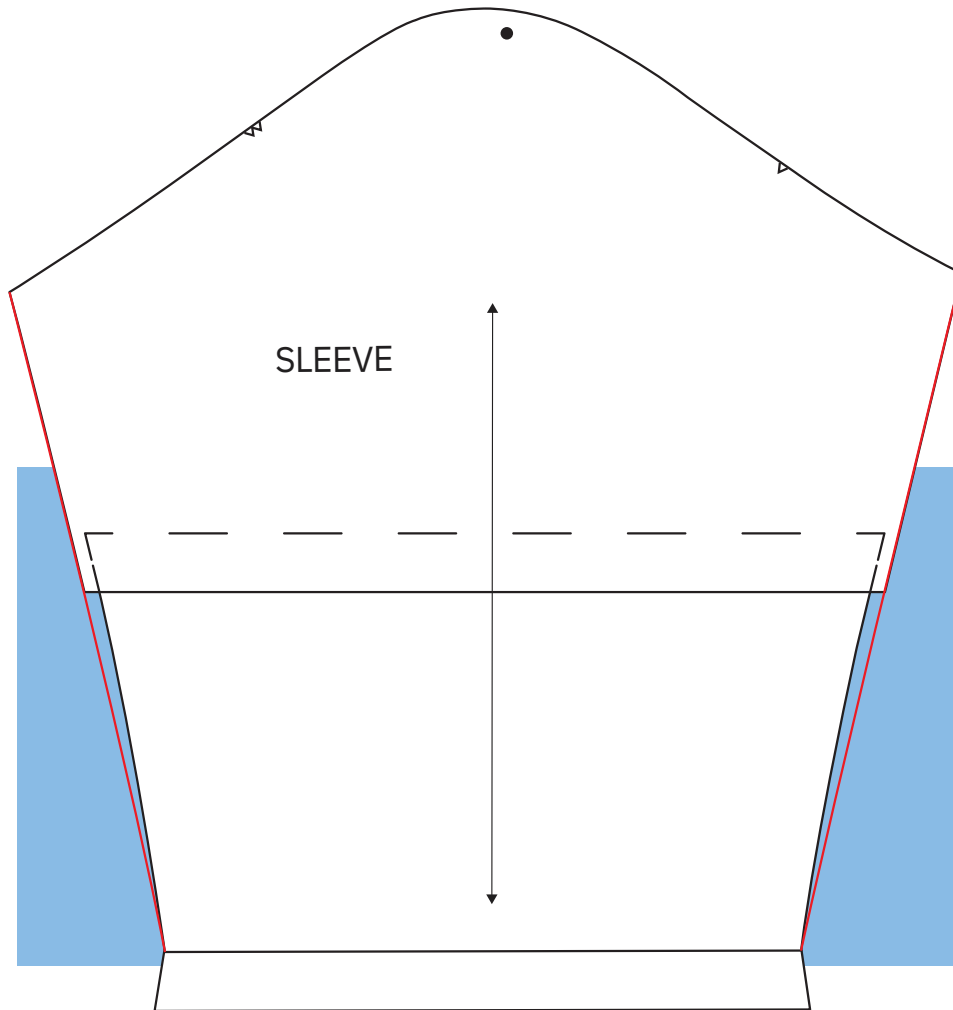
BACK 2

Sleeve & Cuff

Refer to the SLEEVE 1 - 4 Illustrations

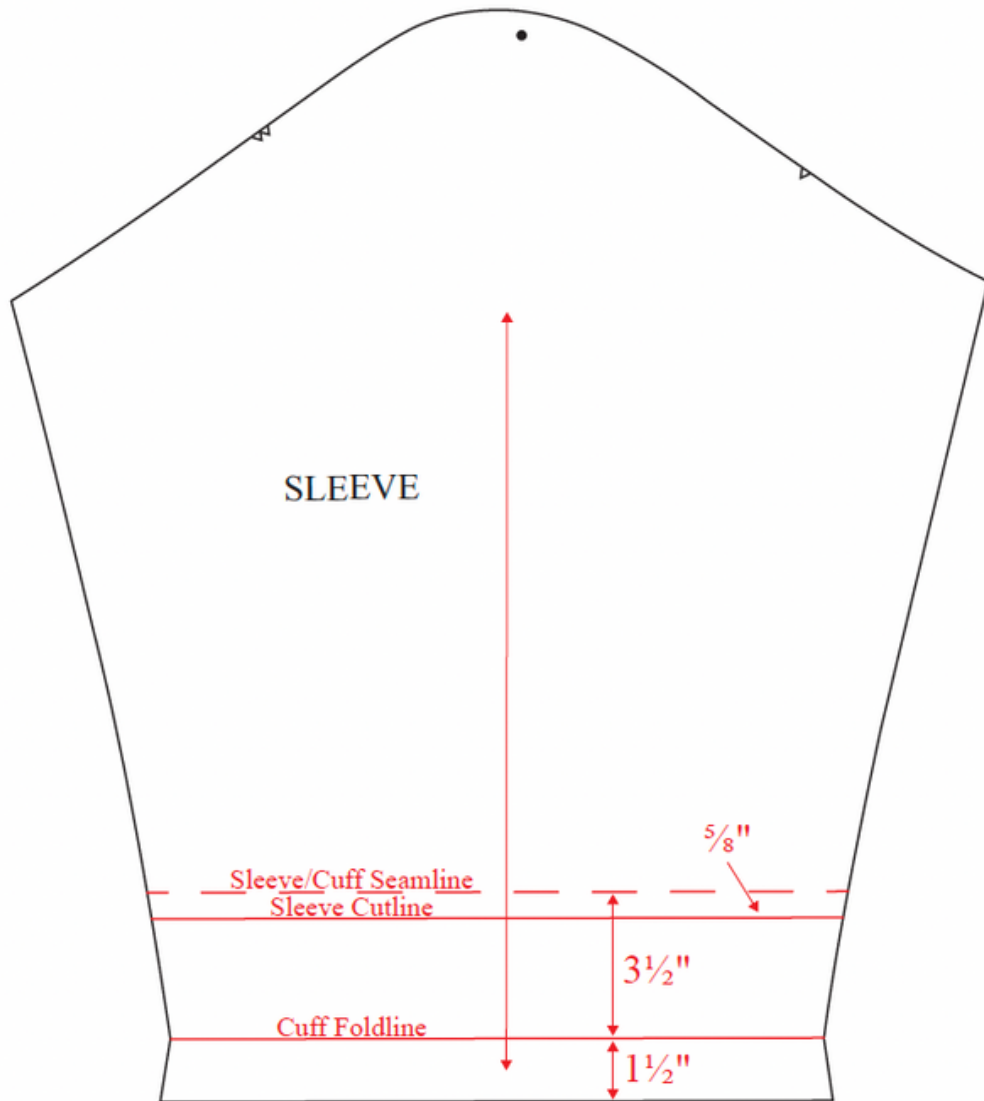
1. To lengthen or shorten the Sleeve, find the center of the sleeve and draw a horizontal line perpendicular to the straight of grain. (The grainline is indicated on the digital version of the pattern.) To lengthen, add pattern paper. To shorten, fold along this line. True the cut lines by drawing a new line connecting the underarm point to the Cuff foldline. *Sleeve 1 & 2*
2. The hem allowance is 1 ½". Measure up from your size 1 ½" and draw a line for the bottom of the sleeve. Label this the Cuff foldline.
3. Extend the grainline to the bottom of the pattern.
4. To allow for the Cuff, measure up from the Cuff foldline 3 ½" and label this the Sleeve/Cuff seamline. Add a 5⁄8" seam allowance below that. This is your new Sleeve line. *Sleeve 3.*
5. Place pattern paper on top of the Sleeve pattern. Trace the Sleeve/Cuff seamline. Add a 5⁄8" seam allowance above this line. This is your Cuff cutline
6. Trace the Cuff foldline and the straight of grain line.
7. Fold the traced pattern up along the Cuff foldline and trace the angled profile of the Sleeve cut lines. This is your new Cuff pattern piece. *Sleeve 4*



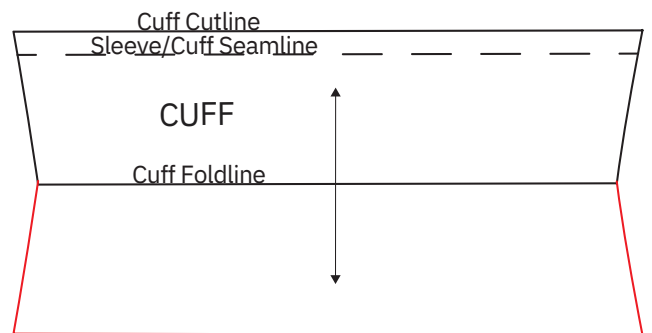
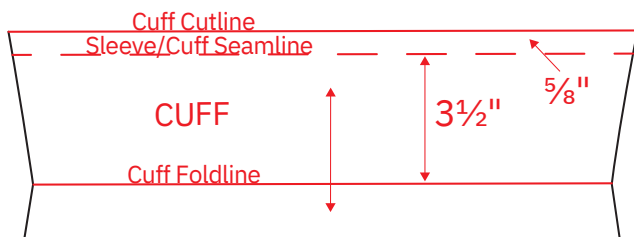
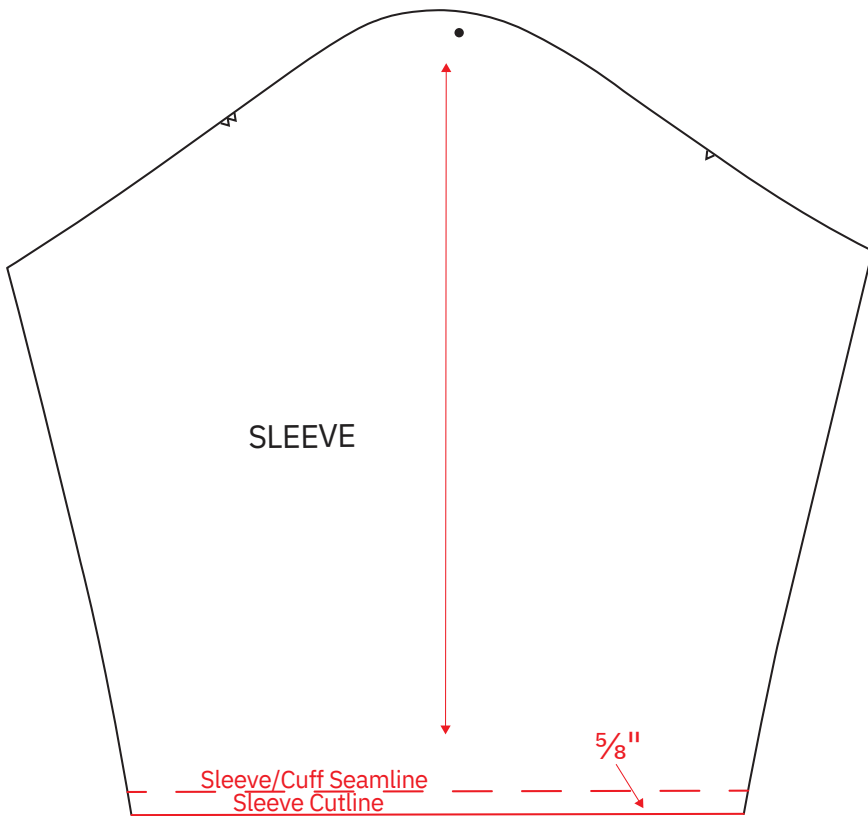


SHORTEN SLEEVE

SLEEVE 2



SLEEVE 3



SLEEVE 4

Collar

Use the Collar pattern piece as is.

Prairie Point

Cut a strip of bias 1 ½" wide X approx. 8" long.

Pressing Templates

Cut 3 pressing templates out of tagboard or a manilla file folder.

- 1 - 2" X 11 ½" Draw a line ⅝" along one long edge
- 1 - 1 ½" X 11 ½"
- 1 - ¾" X 11 ½"

Shirttail Template

Refer to the Shirttail Template in your Course Page. Print it out to scale.

Construction Basics

- Stitch $\frac{5}{8}$ " seam
- 3-thread serge finish the raw edges together and press in one direction
- Snip into the seam allowances at the single and double notches.
- Use tailor's tacks to mark the interior dots.

Order of Construction**1. Yoke**

- Using the tagboard templates, press the center front of each Yoke 2" to the wrong side. Then use the 1 $\frac{1}{2}$ "-wide template to press $\frac{1}{2}$ " to the wrong side.
- Topstitch.
- Sew 3 buttonholes on right front as marked.
- Overlap the Yokes so that the corner dots are 4 $\frac{1}{4}$ " apart. Machine baste along the bottom seamline.

2. Front

- Staystitch corners of Yoke insertion and clip diagonally to each corner.
- Make one Prairie Point.
- Press the edges to center or use the $\frac{3}{4}$ " Clover Bias Tape Maker.
- Trim the Prairie Point to 2 $\frac{3}{8}$ " long from the point.
- Baste the Prairie Point to the center front of the Yoke opening.
- Sew the Yoke to the opening. Begin at the center front and sew on the staystitching side along the bottom and up one side. Repeat to sew the other side.
- Serge finish the edges together and press away from the Yoke.

3. Sew the Front to the Back at the shoulder seams.**4. Construct Collar.**

- Staystitch the neck opening.
- Interface the undercollar.
- Install Collar and slipstitch to the neckline.

5. Shirrtail Hem

- Staystitch $\frac{3}{8}$ " from the bottom edge of the Front and the Back.
- Using the tagboard template of the hem curve, press $\frac{3}{8}$ " to the wrong side using the staystitching line as a guide.
- Fold and sew another $\frac{3}{8}$ " to the wrong side.

6. Sleeves

- Press the Cuff in half lengthwise. Using the $\frac{5}{8}$ " line on the 2"-wide tagboard template, press $\frac{5}{8}$ " to the wrong side on one long edge of the Cuff.
- Sew the other edge to the bottom of the Sleeve. Trim and press towards the Cuff
- Install the sleeves into the garment. Serge finish and press towards the garment.

7. Side and Sleeve seams

- Open out the bottom $\frac{5}{8}$ " of the Cuff. Sew the side and sleeve seams.
- Finish the seam and press towards the Back.
- Trim the seam in the Cuff area and press open.
- Fold the Cuff along the fold line and slipstitch to the Sleeve.

8. Sew on 3 Buttons.

Video Access

The online workshop will release on your course page on March 3rd.

Q&A Access

Zoom Q&A session #1 will be live on March 17th, at 12:00pm CT. Zoom Q&A session #2 will be live on March 23rd at 4:00pm CT. Check your course page for meeting links. If you can't join us, the Zoom recording will be uploaded to your course page.

*Thank you for joining us for a year of Pattern RePlay.
Happy sewing,*

Linda & The Sewing Workshop Team

QUESTIONS?

alex@sewingworkshop.com 

(785) 357.6231 

301 S. Kansas Ave. Suite A
Topeka, KS 66604 

sewingworkshop.com 



#swwhistlepullover
#sewingworkshop
#SC23