

MATERIALS LIST

- [eTee](#) digital pattern
- eTee Sleeve Details [Kit](#) (optional purchase)
 - Or use similar fabrics (XS-XXL)
 - 1 1/3 yards Knit (Pleated & Gathered Sleeve options)
 - 1 3/4 yards Knit (Tie Sleeve option)
 - Or use similar fabrics (1X-5X)
 - 2 1/4 yards Knit (All Sleeve options)
- 1 spool Polyester Thread
- 3 Spools Coordinating Isacord or other overlock thread
- [Silk Thread](#) in contrasting color
- Hand Sewing Needle
- Frixion Pen or other disappearing marking pen
- Cutting Shears
- Pattern Paper or Tissue Paper
- [Rotary Cutter and Cutting Mat](#)
- [Trimming Scissors or Snips](#)
- [Glasshead Pins](#)
- [Seam Ripper](#)
- [Seam Gauge](#)
- [C-Thru Grid Ruler](#)
- [Prismacolor Col-Erase 20045 Carmine Red Pencil with Eraser](#)
- [Scotch Removable Tape](#)
- [Pattern Paper](#)
- [Fusi-Web](#)
- [Knit Stay Tape](#)
- [Walking Foot](#)
- [Walking Foot with Edgestitch Attachment \(optional\)](#)
- [Manilla file Folder or Tagboard](#)
- [Sleeve Board](#)
- [Tailor's Ham](#)
- [Chakoner](#)
- [Stiletto](#)
- Seam Roll

You will need a sewing machine that has been cleaned and oiled and is in good condition. If your machine also embroiders and has a 9mm throat plate, you may want to invest in a 5mm-wide throat plate. If you have the even feed feature on your machine, engage it. If not, add a walking foot, if possible. We recommend a serger for seam finishes.

Purchase the Pattern

Purchase the digital eTee pattern. You can now select for us to print the pattern for you from our in-house printing service.

Course Page Documents to Download:

- New Sleeve Patterns Sizes XS-XXL
- New Sleeve Patterns Sizes 1X-5X

Fabric Preparation

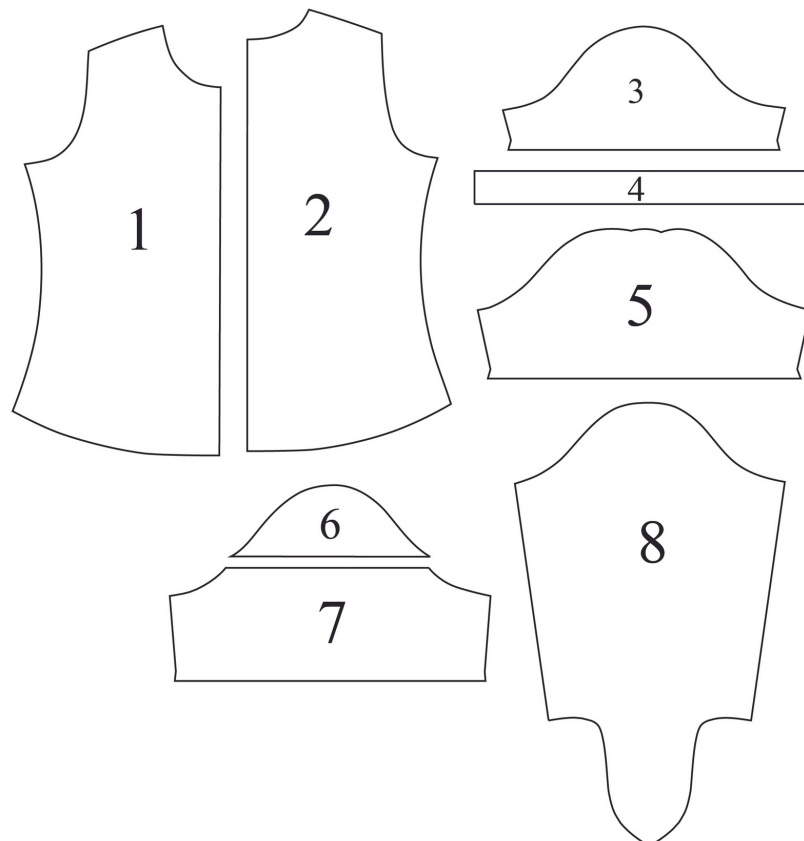
Pre-wash a small sample of the knit fabric. If you're happy with the result, wash your yardage.

Pattern Pieces Needed from Original Pattern

- Front (1)
- Back (2)
- Neck Binding (4)

Plus New Sleeve Patterns (one sleeve per garment)

- Pleated Sleeve (5)
- Upper and Lower Gathered Sleeve (6) (7)
- Tie Sleeve (8)



Fitting

The eTee is a fitted t-shirt that is available in sizes XS-XXL and 1X-5X.

Measure your full bust. The eTee measurement chart is included here. Measure the pattern on that size and compare the two measurements. The amount of ease you add is a personal choice based on your shape, how you like garments to fit, and the degree of stretch in the fabric you're working with. Generally, the more the fabric stretches, the less ease you need to add.

For instance, a cotton and spandex knit, we recommend allowing 2" - 3" of ease in the bust. Start with a size that has this amount of ease and adjust as needed. Consider using the [Fashion Fitting Encyclopedia](#) for reference.

References to Consider:

[Fitting the Bust Download Tutorial](#)

[Fitting Shoulders Download Tutorial](#)

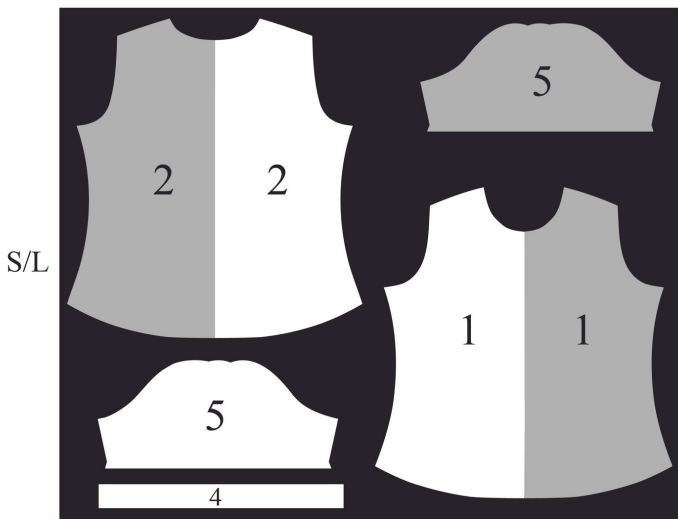
[eTee Evolution Download Tutorial](#)

[Sewing Knits from Fit to Finish Book](#)

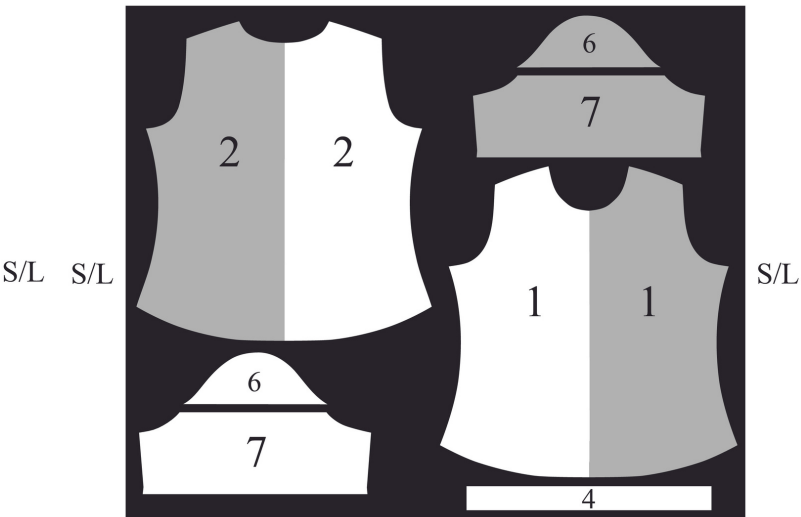
SIZE**	XS	S		M		L		XL	XXL
	6	8	10	12	14	16	18	20	22
	1	1.5		2		2.5		3/3.5	4
BUST	31"	32.5"	34"	36"	38"	40"	42"	44"	46"
WAIST	24.5"	25.5"	26.5"	27.5"	29"	31"	33"	35"	37"
HIP	34"	35"	36"	37"	39.5"	41.5"	43.5"	45.5"	47.5"

SIZE**	1X		2X		3X		4X		5X	
	16	18	20	22	24	26	28	30	32	34
BUST	44"	46"	48"	50"	52"	54"	56"	58"	60"	62"
WAIST	36"	38"	40"	42"	44"	46"	48"	50"	52"	54"
HIP	49"	51"	53"	55"	57"	59"	61"	63"	65"	67"

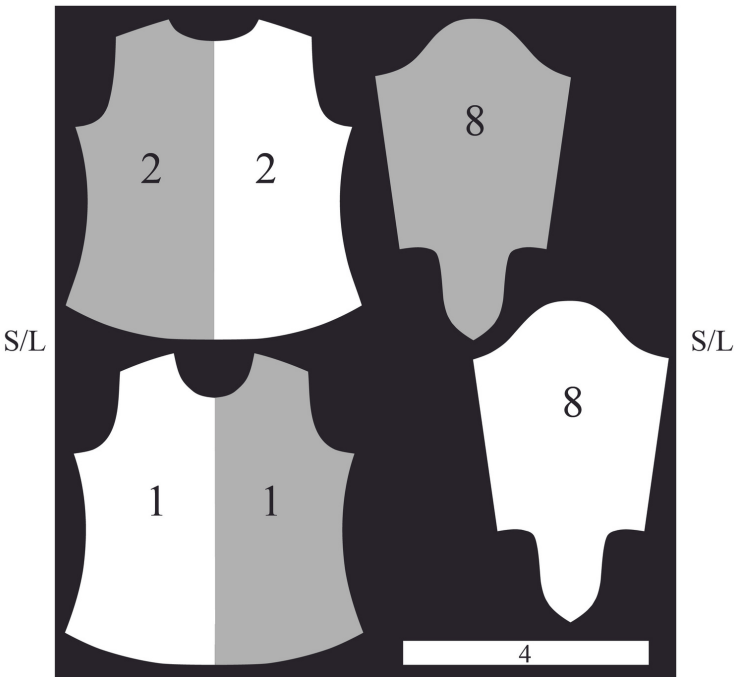
Pleated Sleeve
58" wide
1 1/3 yards



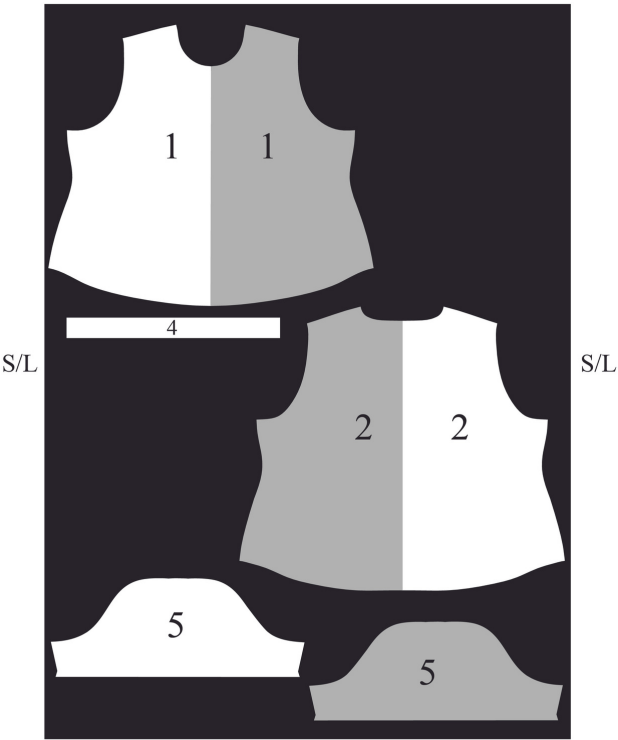
Gathered Sleeve
58" wide
1 1/3 yards



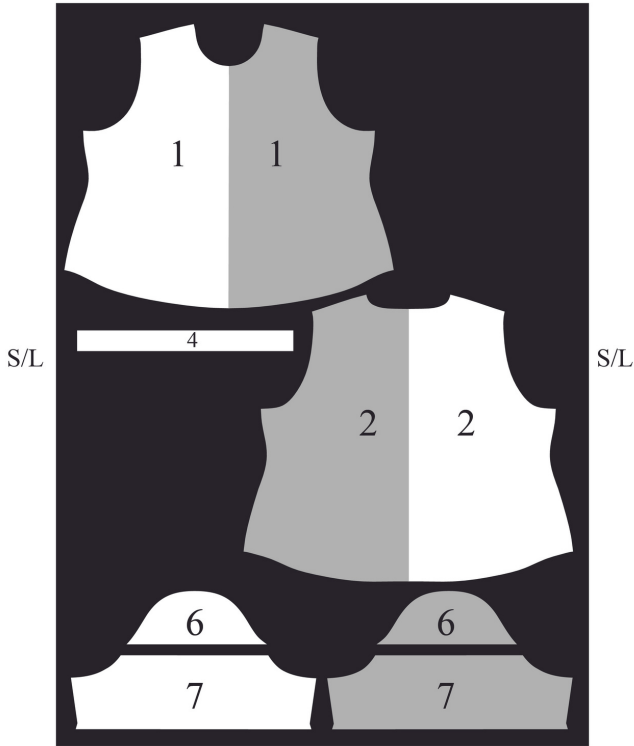
Tie Sleeve
58" wide
1 3/4 yards



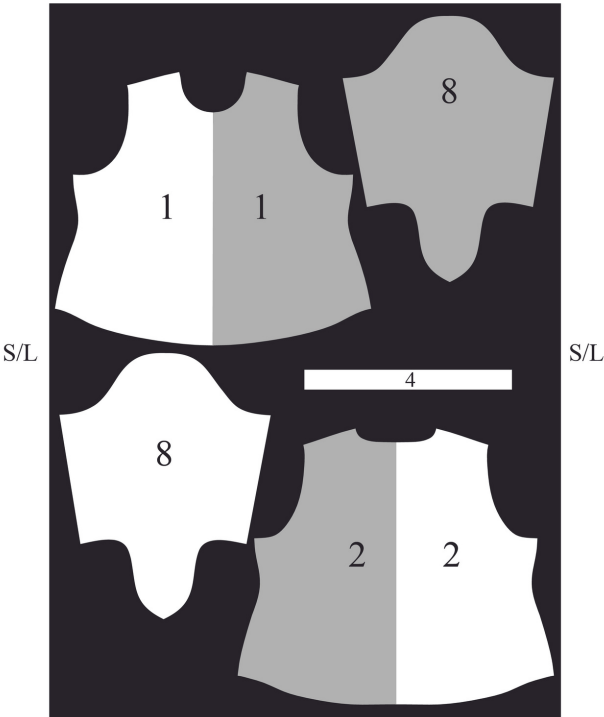
Pleated Sleeve
58" wide
2 1/4 yards



Gathered Sleeve
58" wide
2 1/4 yards



Tie Sleeve
58" wide
2 1/4 yards



Stitch and Finish

This is the simplest of all of the seam options. Stitch a line of straight stitches along the seamline. Then, using a three-thread serger, finish the edges.



Zigzag Stitch

Start with a machine zigzag setting of 0.5 mm wide x 2.5 mm long. The settings may vary with the weight and type of fabric. Use this seam for garments that are close fitting and need to stretch during wearing.



Pressing with Templates

1. Hem allowance for the eTee is $\frac{5}{8}$ " on both sleeve and bottom hems. Cut a strip of tag board 12" long x 2" wide, adding a line at $\frac{5}{8}$ ".
2. While the garment pieces are still flat, place the template on the wrong side of the hem. Bring the hem allowance up and over the template, matching raw edge of the fabric to the $\frac{5}{8}$ " line on template. Press through all layers.
3. This establishes a memory crease for when it's time to hem the garment or sleeve.



Fusi-Web

1. Apply strips of Fusi-web on the wrong side of the hem near the edge. Leave the paper covering in place during the normal construction of the garment.
2. Once you are ready to hem the garment, remove the paper covering, turn the hem to the wrong side, and press the hem with an iron to fuse it in place.
3. Once the hem is fused in place, stitching is easy. The hem will stay in place without shifting, stretching, or puckering during stitching.



Straight Stitch

A straight stitch is simple and the most invisible. Leave the edge raw or finish it with a three-thread overlock stitch formation.



Zigzag Stitch

A small zigzag stitch allows the fabric to stretch without popping stitches. Experiment with length and width settings. Start with 2.5 mm length and 1.5 mm width setting.



Coverstitch

A coverstitch looks like a double needle stitch with two rows of straight stitches on top and connecting stitches on the bottom. This stitch is flatter, covers the raw edge of the hem and looks like most professional of all the hem stitch options.



1. Fold the binding in half lengthwise with wrong sides together and press. If the edges curl and prevent you from pressing the binding flat, use a narrow strip of Fusi-web to fuse layers together.

2. With right sides together, stitch the narrow ends of the binding together to form a circle.



3. In order to apply the binding evenly around the neck opening, divide both the binding and the neck opening into quarters. Start by folding the binding in half with the seam at one end. Clip into the seam allowance at the opposite end fold.

4. Refold the binding, stacking the seam on top of the clip mark to find the waurter markings. Clip into the seam allowance at these two new end folds.



5. To quarter-mark the neck opening, pinch the shoulder seams together and clip into the seam allowance of the front and back at the folds.



6. Then, pinch the front and back clips together and clip into the seam allowance to mark the end folds. These clips will not necessarily be located at the shoulder seams.

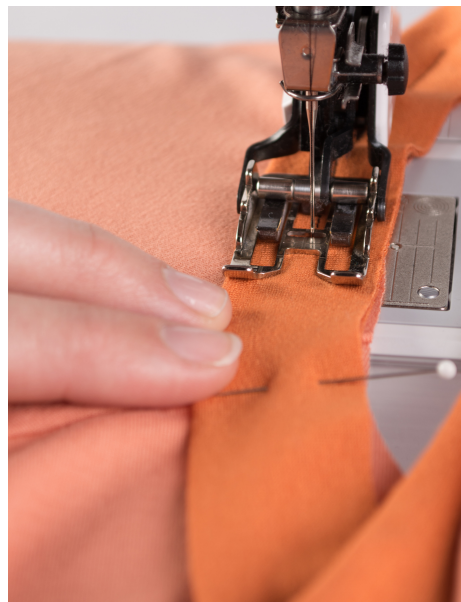


Applying the Binding

1. With right sides together and raw edges aligned, match the clip marks on the binding with the clip marks on neck opening, with the binding seam at the center back of the garment. Pin at each clip mark.



2. Starting at center back, line up the left side of the presser foot with the outer folded edge of the binding. Move the needle position to the right the distance of the finished binding. With your right hand, hold the next quarter-marked pin and keeping all raw edges together. Stitch from pin to pin using your left hand to control the alignment of the binding to the neck edge.



3. Finish raw edges together. Finger press the seam allowance towards garment wrong side. Position the binding under the sewing machine presser foot so the needle is positioned just above the seamline. Move the needle to the left position and stitch next to the seam, catching the seam allowance on the wrong side.

4. Place the neck opening over a tailor's ham. Apply steam to the binding and hand press the binding to help form a smooth and flat curved shape. Allow it to dry before removing it from the ham.



1. Sew a line of basting stitches just inside the seamline along the sleeve cap and between the notches, leaving long thread tails at each end of the stitching. Gently pull the bobbin thread to ease the fabric and add shape to the sleeve cap. Place the sleeve over the tapered end of a tailor's ham and steam the fullness of the seam allowance, gently pressing the stitching.



2. With right sides together, pin the sleeve into the armhole, matching seams and other match points. Starting at the top of the sleeve, roll the seam allowance over your fingers and insert a pin perpendicular to the basting. Moving down one side of the sleeve between the top, the notches, and the underarm seam, roll sections over your fingers to ease the sleeve into the armhole opening. Continue to pin regularly. When one side is done, start at the top and repeat on the other side.



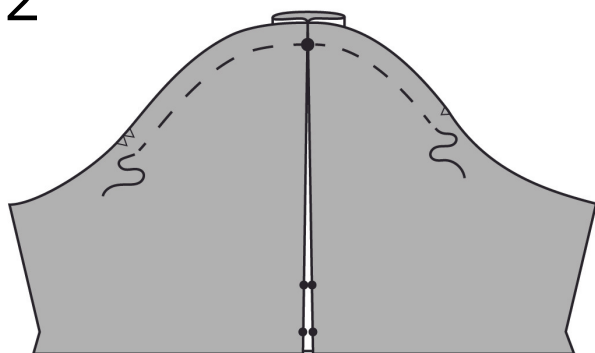
3. Once the sleeve is pinned in place, stitch just inside the basting stitches with the sleeve side facing up. Leave the seam unfinished or serge.

4. Place the sleeve over the tailor's ham to lightly press the sleeve from the right side of the garment. Avoid pressing the sleeve flat after you have worked so hard to build shape into it.



1. Start making eTee according to pattern instructions. Complete #1-#8.
2. On PLEATED SLEEVE (5), make inverted pleats by folding along foldline and placing each fold at center placement line. Pin pleats in place. Machine **BASTE** along sleeve cap directly on seamline between front and back notches.
3. Right sides together, matching dots at bottom of Pleated Sleeve, stitch pleats in place from bottom raw edge to second dot. **BACKSTITCH** at second dot.
4. **BASTE** pleat through first dot at hemline.
5. Press $\frac{5}{8}$ " hem to wrong side. Hem will be stitched later.
6. Continue with eTee instructions, #10, to finish garment.

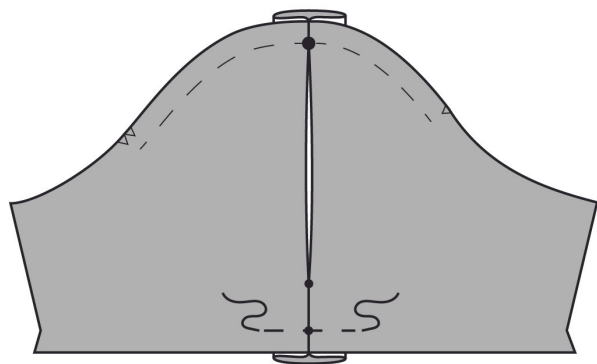
2



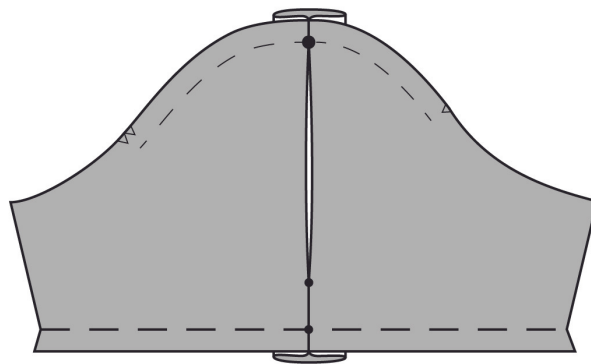
3



4

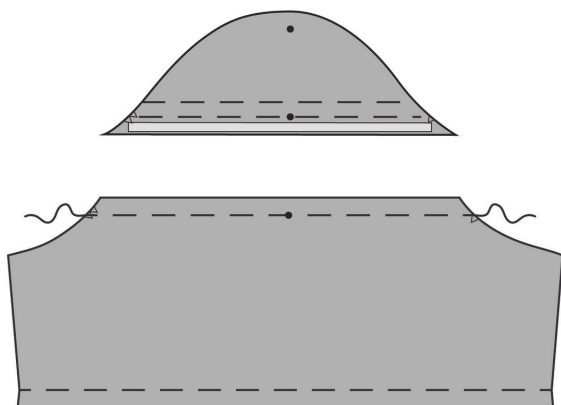


5

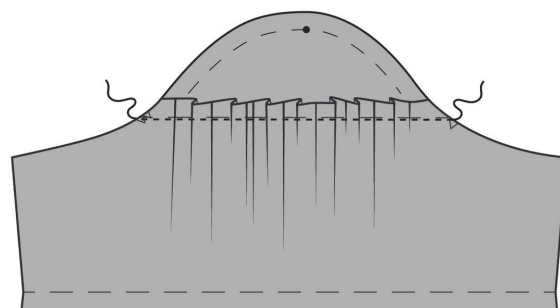


1. Start making eTee according to pattern instructions. Complete #1-#8.
2. On UPPER GATHERED SLEEVE (6) draw chalk lines 1 1/4" and 5/8" from bottom. Apply a narrow strip of Fusi-Web right below the 5/8" seamline.
3. Along top edge of LOWER GATHERED SLEEVE (7), sew a gathering **BASTE** stitch 5/8" from raw edge. Apply Fusi-web along bottom hem edge. Press 5/8" hem to wrong side. Hem will be stitched later.
4. Pin wrong side of Lower Gathered Sleeve to right side of Upper Gathered Sleeve, matching center dots, notches and top raw edge to top chalk line. Gather basting stitch, adjusting so sleeves fit together. Lightly fuse in place.
5. Using a straight or zigzag stitch, sew Sleeve together directly on gathering stitch. Trim seam allowance of Upper Gathered Sleeve to 3/8".
6. Machine **BASTE** along sleeve cap directly on seamline between front and back notches.
7. Continue with eTee instructions, step #10, to finish garment.

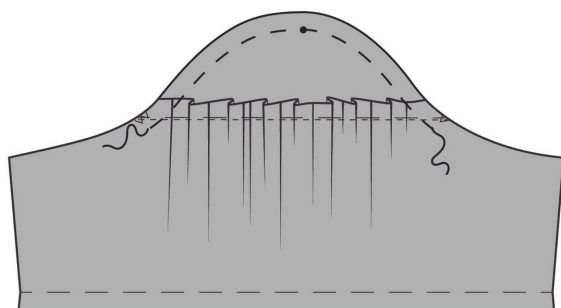
2 - 3



4 - 5

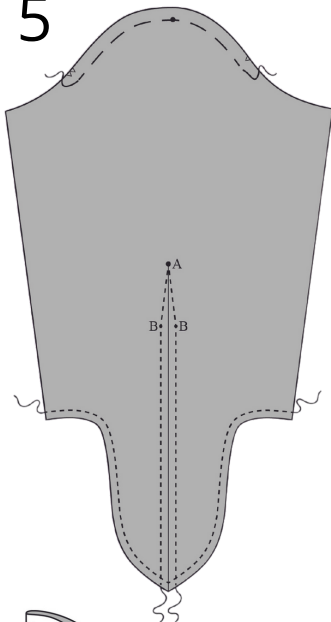


6

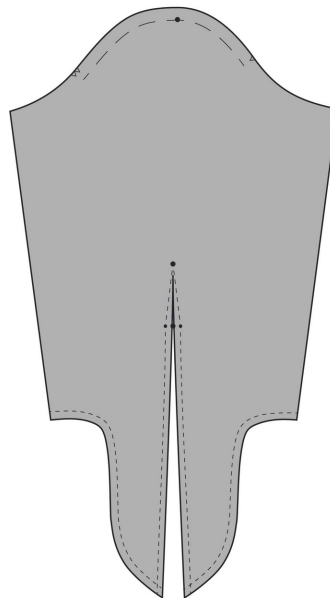


1. Start making eTee according to pattern instructions. Complete #1-#8.
2. Machine **BASTE** TIE SLEEVE (8) along sleeve cap directly on seamline between front and back notches.
3. Chalk mark a line from A to the bottom of the tie.
4. **STAYSTITCH** $\frac{3}{8}$ " from raw edge along bottom edge.
5. **STAYSTITCH** $\frac{3}{8}$ " on both sides of center chalk line, stitching from bottom of tie to A, pivoting at dots B.
6. Slash between the staystitching lines from the bottom of the tie to just before A.
7. With right sides together fold the Sleeve in half matching dots B. Sew a dart from A to B. Press dart open and continue pressing $\frac{3}{8}$ " hems to wrong side using staystitching as a guide. **TOPSTITCH** each hem stopping just above B, pivot and sew across to just above B, pivot and continue to the bottom.
8. Sew the Sleeve seam. Trim and press seam open.
9. Press bottom hems $\frac{3}{8}$ " to wrong side using staystitching as guide. **TOPSTITCH** from one point and ending at opposite point.
10. Continue with eTee instructions, step #12, to finish garment.

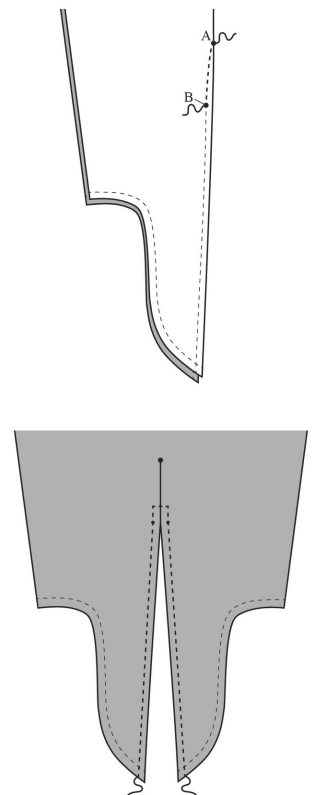
2 - 5



6



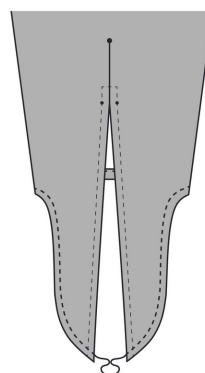
7



8



9



Video Access

The live zoom workshop will be June 2nd at 12:00pm CDT. The recording will be posted on the course page after the live video.

Q&A Access

There will be two Zoom Q&A sessions this month on June 9th at 12:00pm and June 29th at 4:00pm CT. Check your course page for the meeting link. If you can't join us, the Zoom recording will be uploaded to your course page.

*Thank you for joining us for a year of Pattern RePlay.
Happy sewing,*

Linda & The Sewing Workshop Team

QUESTIONS?

alex@sewingworkshop.com 

(785) 357.6231 

301 S. Kansas Ave. Suite A
Topeka, KS 66604 

sewingworkshop.com 



#sweteesleeveoptions
#sewingworkshop
#SC23